

WAAS CH 93535 W30A	APP CRS 296°	Rwy ldg 10000 TDZE 9 Apt Elev 9
--	------------------------	--

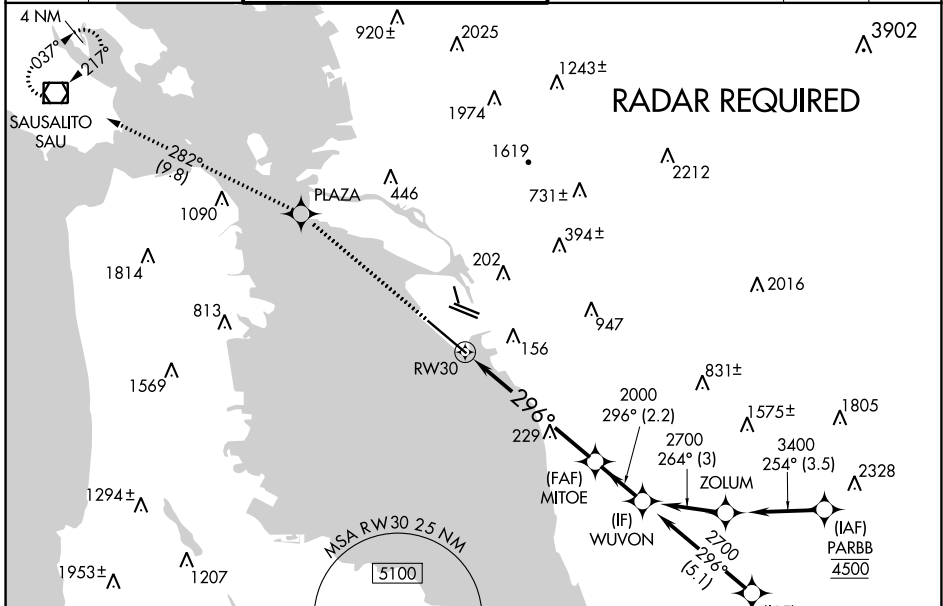
RNAV (GPS) Y RWY 30

METRO OAKLAND INTL (OAK)

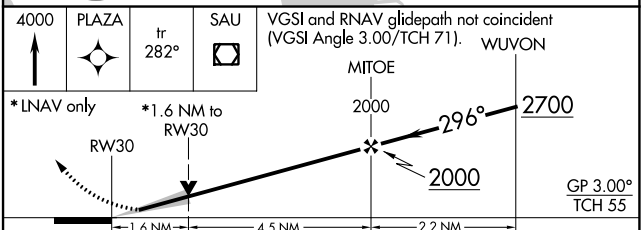
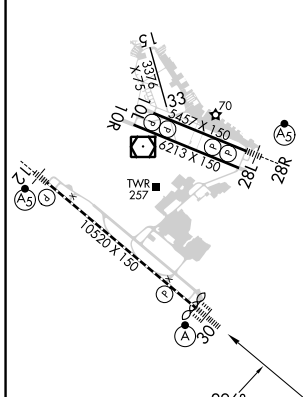
⚠ For uncompensated Baro-VNAV systems, LNAV/VNAV NA below 1°C (34°F) or above 54°C (130°F). DME/DME RNP-0.3 NA. For inop ALS, increase LNAV/VNAV all Cats visibility to RVR 4500 and LNAV Cat C/D visibility to 1 3/8 SM.

ALSF-2 MISSED APPROACH: Climb to 4000 direct PLAZA and on track 282° to SAU VOR/DME and hold, continue climb-in-hold to 4000.

D-ATIS 133.775	NORCAL APP CON 125.35 263.15	OAKLAND TOWER 118.3 291.65 (Rwys 10L/R-28L/R, 15-33) 127.2 256.9 (Rwy 12-30)	GND CON 121.9 (Rwys 10L/R-28L/R, 15-33) 121.75 (Rwy 12-30)	CLNC DEL 121.1	CPDLC
--------------------------	--	--	--	--------------------------	-------



ELEV 9	D	TDZE 9
--------	----------	--------



CATEGORY	A	B	C	D
LPV DA		209/18	200 (200-1/2)	
LNAV/VNAV DA		283/24	274 (300-1/2)	
LNAV MDA	580/24	571 (600-1/2)	580-1 1/4	571 (600-1 1/4)
C CIRCLING	580-1	571 (600-1)	660-1 3/4 651 (700-1 3/4)	1400-3 1391 (1400-3)

REIL Rwy 10R
TDZ/CL Rwy 30
MIRL Rwy 15-33
HIRL Rwys 12-30, 10L-28R, 10R-28L

SW-2, 13 JUN 2024 to 11 JUL 2024

SW-2, 13 JUN 2024 to 11 JUL 2024