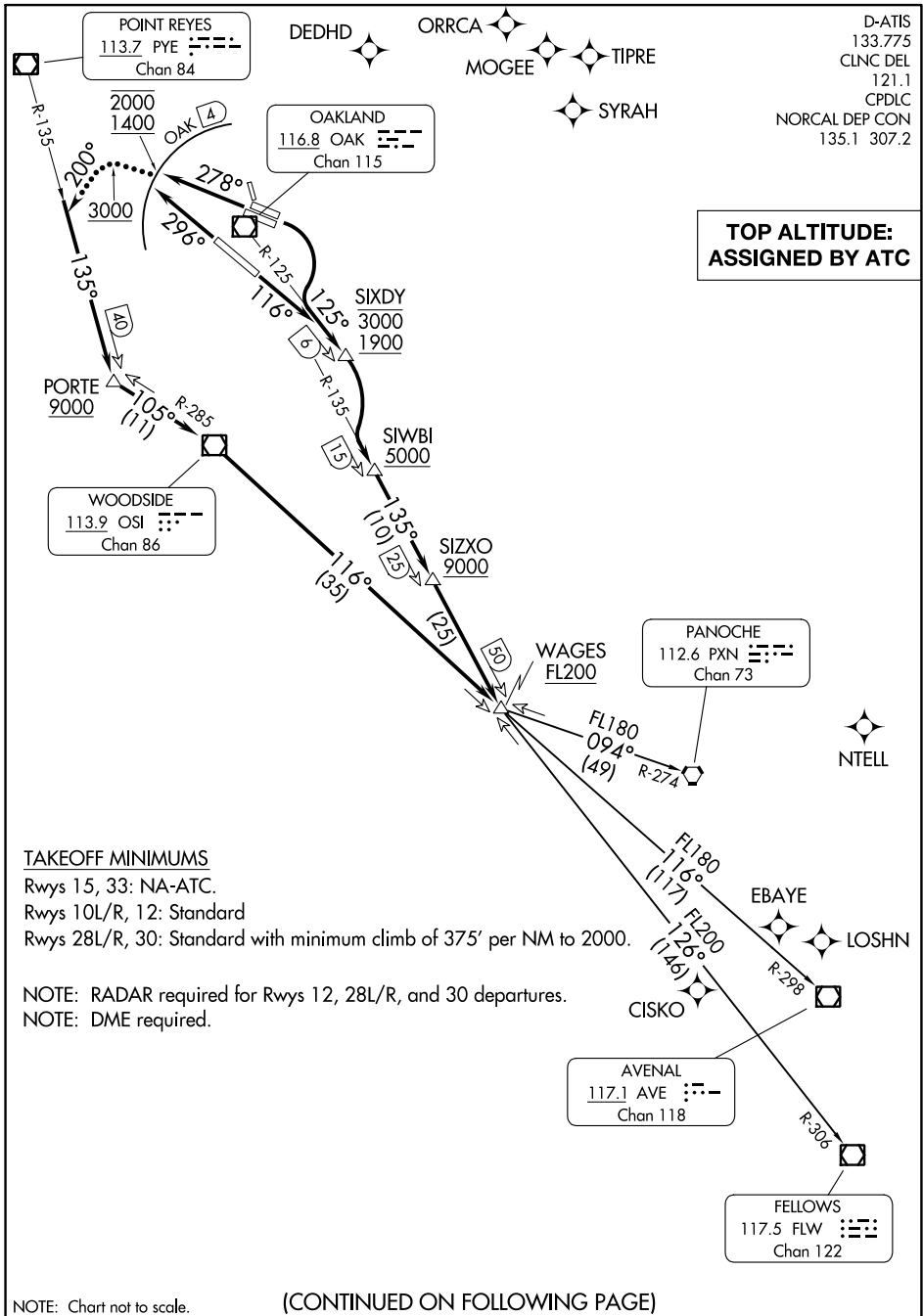


# SKYLINE ONE DEPARTURE

AL-294 (FAA)



**TOP ALTITUDE:  
ASSIGNED BY ATC**

### TAKEOFF MINIMUMS

Rwys 15, 33: NA-ATC.

Rwys 10L/R, 12: Standard

Rwys 28L/R, 30: Standard with minimum climb of 375' per NM to 2000.

NOTE: RADAR required for Rwys 12, 28L/R, and 30 departures.

NOTE: DME required.

NOTE: Chart not to scale.

(CONTINUED ON FOLLOWING PAGE)

SW-2, 13 JUN 2024 to 11 JUL 2024

SW-2, 13 JUN 2024 to 11 JUL 2024

# SKYLINE ONE DEPARTURE