

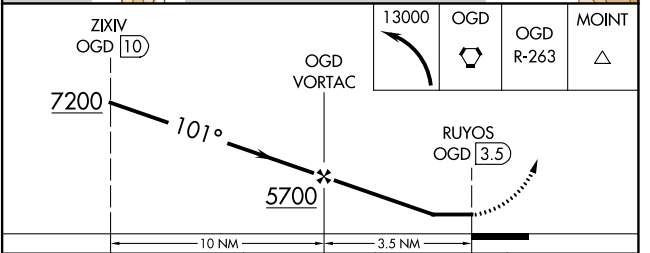
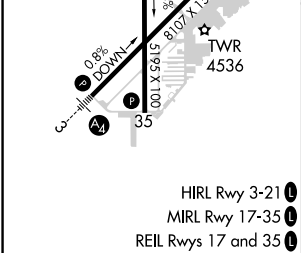
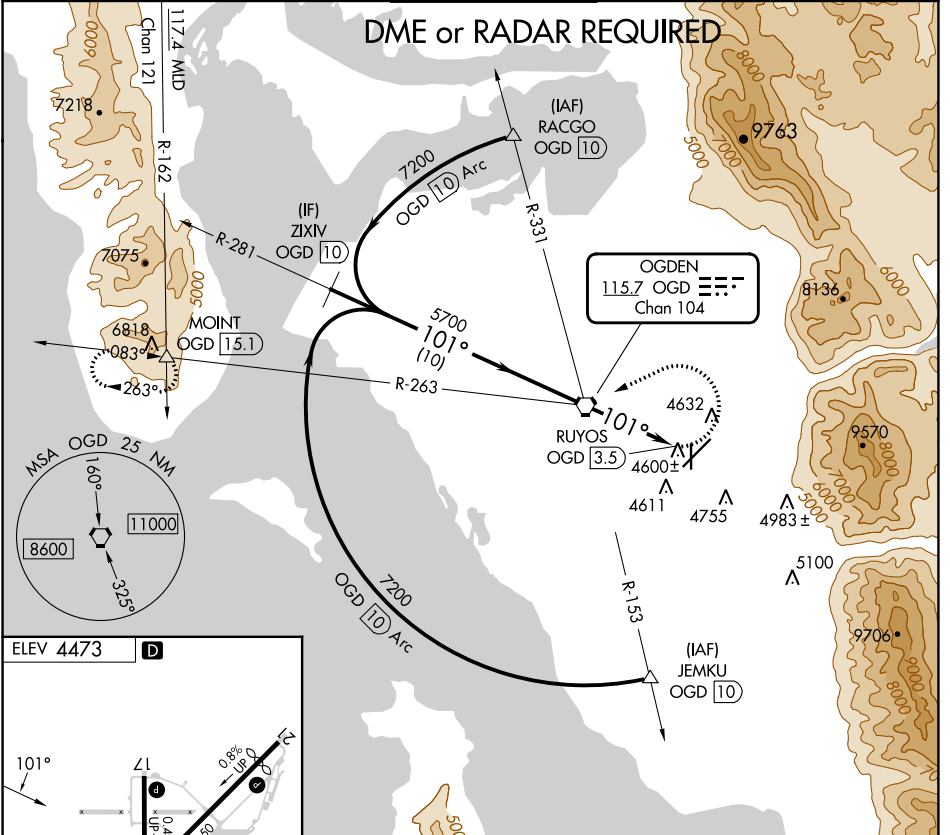
VORTAC OGD <b>115.7</b> Chan <b>104</b>	APP CRS <b>101°</b>	Rwy Idg TDZE Apt Elev <b>N/A</b> <b>N/A</b> <b>4473</b>
---	------------------------	--

**VOR-A**  
OGDEN-HINCKLEY (OGD)

**⚠** Circling to Rwy 17 NA at night.  
**⚠** Circling NA for Cat C/D east of Rwys 21 and 35.  
 Rwy 17 and 35 helicopter visibility reduction below 1 SM NA.  
 When local altimeter setting not received, use Hill AFB altimeter setting.

MISSED APPROACH: Climbing left turn to 13000 direct OGD VORTAC and on OGD VORTAC R-263 to MOINT INT/15.1 DME and hold, continue climb-in-hold to 13000.

ATIS <b>125.55</b>	SALT LAKE CITY APP CON <b>121.1</b>	OGDEN TOWER* <b>118.7 (CTAF) 253.5</b>	GND CON <b>121.7</b>	UNICOM <b>122.95</b>
-----------------------	--	---	-------------------------	-------------------------



FAF to MAP 3.5 NM					
Knots	60	90	120	150	180
Min:Sec	3:30	2:20	1:45	1:24	1:10
CATEGORY	A	B	C	D	
<b>C</b> CIRCLING	4980-1 507 (600-1)	5060-1 587 (600-1)	5100-1¼ 627 (700-1¼)	5100-2 627 (700-2)	

OGDEN, UTAH  
Orig 29MAR18

41°12'N-112°01'W

OGDEN-HINCKLEY (OGD)  
**VOR-A**

SW-4, 13 JUN 2024 to 11 JUL 2024

SW-4, 13 JUN 2024 to 11 JUL 2024