

WAAS CH <b>42701</b> <b>W17A</b>	APP CRS <b>173°</b>	Rwy ldg <b>6014</b> TDZE <b>1351</b> Apt Elev <b>1354</b>
--	------------------------	---

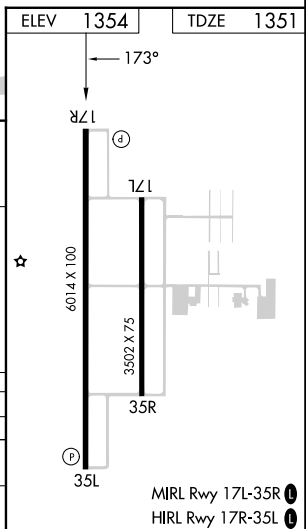
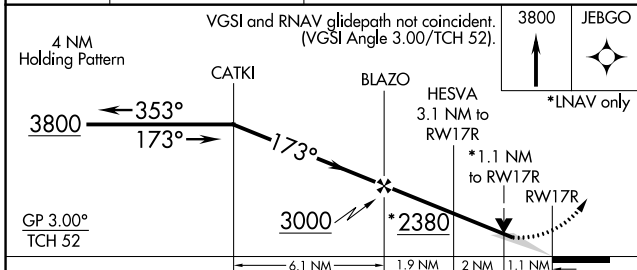
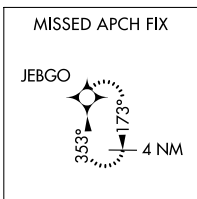
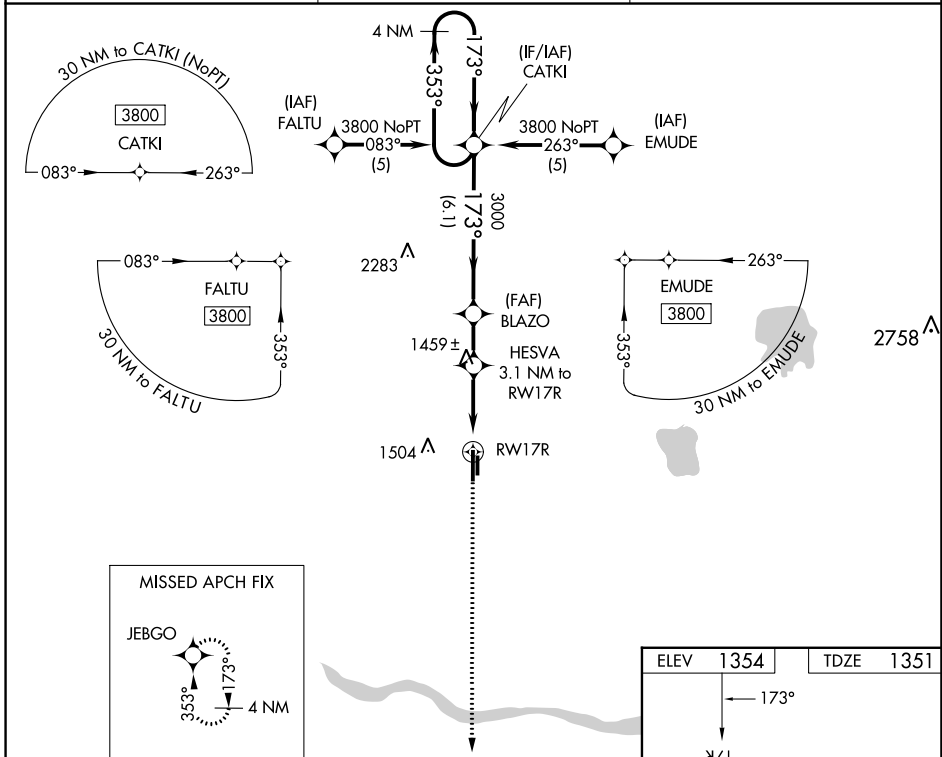
# RNAV (GPS) RWY 17R

CLARENCE E PAGE MUNI (R/C/E)

**⚠** DME/DME RNP-0.3 NA. When local altimeter setting not received, use Wiley Post altimeter setting and increase all DA 29 feet and all MDA 40 feet and increase LPV all Cats visibility ¼ mile. VDP NA when using Wiley Post altimeter setting.

MISSED APPROACH: Climb to 3800 direct JEBGO and hold.

AWOS-3 <b>125.05</b>	OKE CITY APP CON <b>124.6 266.8</b>	UNICOM <b>123.0 (CTAF)</b>
-------------------------	--	-------------------------------



CATEGORY	A	B	C	D
LPV DA	1601-¾ 250 (300-¾)			NA
LNAV MDA	1760-1	409 (500-1)	1760-1¼ 409 (500-1¼)	NA
CIRCLING	1800-1 446 (500-1)	1820-1 466 (500-1)	1840-1½ 486 (500-1½)	NA

SC-1, 13 JUN 2024 to 11 JUL 2024

SC-1, 13 JUN 2024 to 11 JUL 2024