

OKLAHOMA CITY, OKLAHOMA

HI-ILS or LOC/DME Y RWY 18

LOC I-FRJ 111.3	APCH CRS 177°	Rwy ldg 11,100 TDZE 1267 Arprt Elev 1291
---------------------------	-------------------------	---

[USAF]

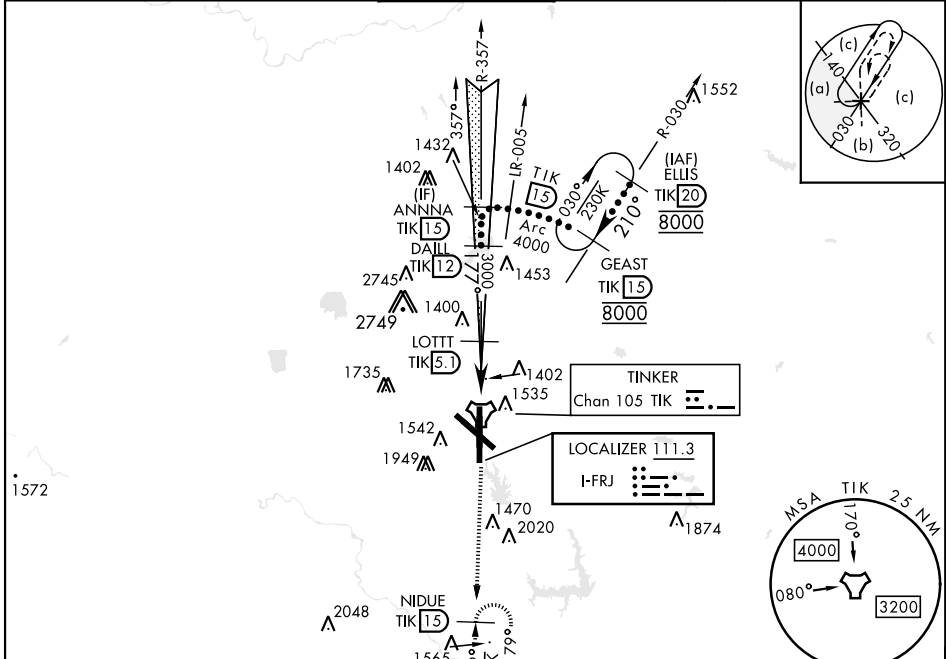
TINKER AFB (KTIK)

▼ * When ALS inop, increase CAT CDE RVR to 55 and vis to 1 mile.
 ** CAT E circling NA in sector S of Rwy 13-31 and W of RWY 18. Circling NA to Rwy 18.



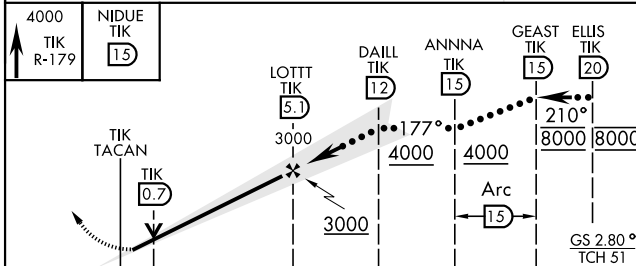
MISSED APPROACH: Climb to 4000 on TIK TACAN R-179 to NIDUE and hold.

ATIS ★ 270.1	OKE CITY APP CON 124.2 336.4	TOWER 124.45 251.05	GND CON 121.8 275.8	CLNC DEL 119.7 335.8	ASR
------------------------	--	-------------------------------	-------------------------------	--------------------------------	-----

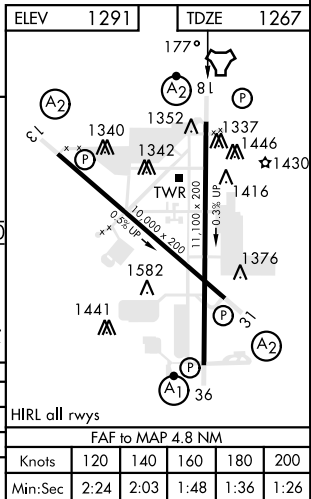


Localizer unusable within 0.4 NM from threshold.
 Localizer NA beyond 15° right of course.

EMERG SAFE ALT 100 NM 4700



4000 TIK R-179	NIDUE TIK 15	LOTT TIK 5.1	DAILL TIK 12	ANNNA TIK 15	GEAST TIK 15	ELLIS TIK 20
0.8		4.8 NM		GS 280° TCH 51		
CATEGORY	C	D	E			
S-ILS 18	1467/40	200	(200-¾)			
S-LOC 18 *	1640/40	373	(400-¾)			
CIRCLING **	1960-1¾ 669 (700-1¾)	1960-2 669 (700-2)	1960-2¼ 669 (700-2¼)			



OKLAHOMA CITY, OKLAHOMA

35°25'N-97°23'W

TINKER AFB (KTIK)

Amtd 6 13JUN24

HI-ILS or LOC/DME Y RWY 18

SC-1, 13 JUN 2024 to 11 JUL 2024

SC-1, 13 JUN 2024 to 11 JUL 2024