

# HI-ILS or LOC/DME Y RWY 36

LOC I-TIK <b>109.5</b>	APCH CRS <b>357°</b>	Rwy ldg <b>11,100</b> TDZE <b>1291</b> Arprt Elev <b>1291</b>
---------------------------	-------------------------	---

[USAF]

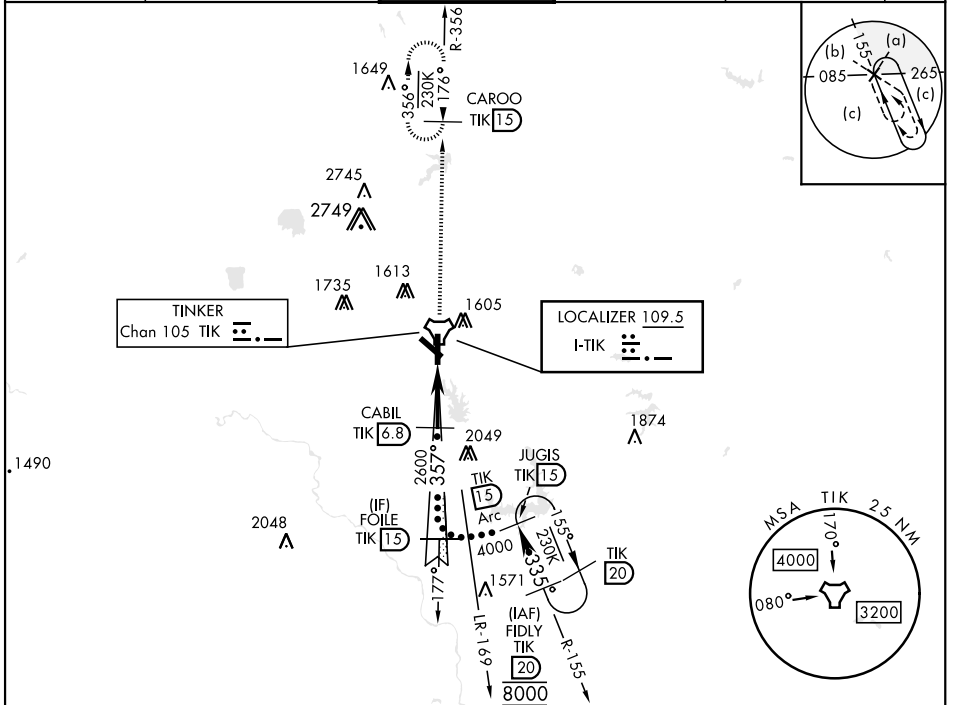
TINKER AFB (KTIK)

▼ \* When ALS inop, increase CAT CDE RVR to 40 and vis to 3/8 mile.  
 \*\* When ALS inop, increase CAT CDE RVR to 45 and vis to 7/8 mile.  
 \*\*\* CAT E circling NA in sector S of Rwy 13-31.  
 Circling not authorized to RWY 18.



MISSED APPROACH: Climb to 4000 on TIK R-356 to CAROO and hold.

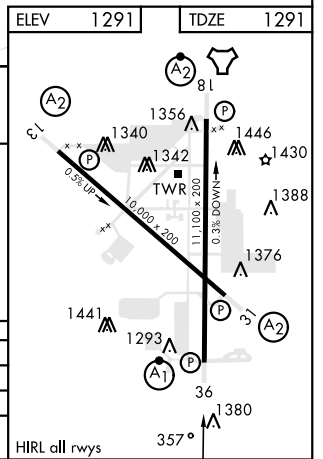
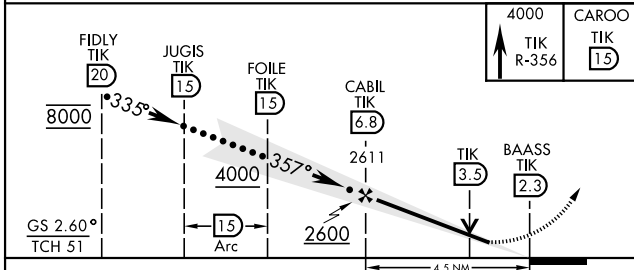
ATIS * <b>270.1</b>	OKE CITY APP CON <b>120.45 288.325</b>	TOWER <b>124.45 251.05</b>	GND CON <b>121.8 275.8</b>	CLNC DEL <b>119.7 335.8</b>	ASR
------------------------	---	-------------------------------	-------------------------------	--------------------------------	-----



SC-1, 13 JUN 2024 to 11 JUL 2024

SC-1, 13 JUN 2024 to 11 JUL 2024

EMERG SAFE ALT 100 NM 4700



CATEGORY	C	D	E
S-ILS 36*	1491/24	200 (200-1/2)	
S-LOC 36**	1680/35	389 (400-3/4)	
*** CIRCLING	1960-1 3/4 669 (700-1 3/4)	1960-2 669 (700-2)	1960-2 1/4 669 (700-2 1/4)

# HI-ILS or LOC/DME Y RWY 36