
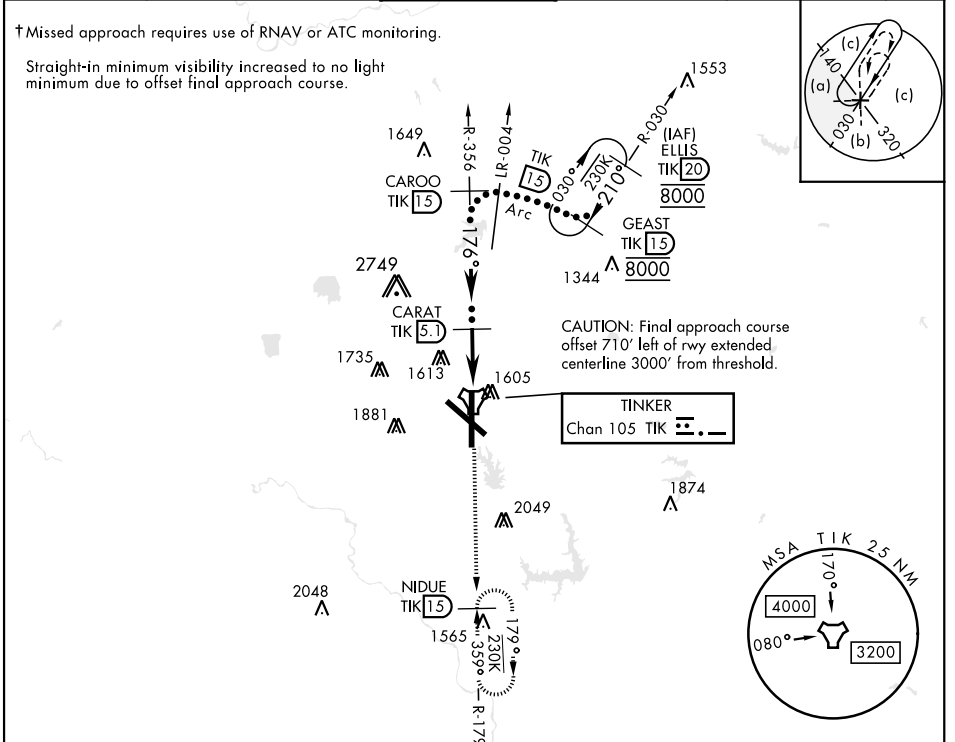


# HI-TACAN Y RWY 18

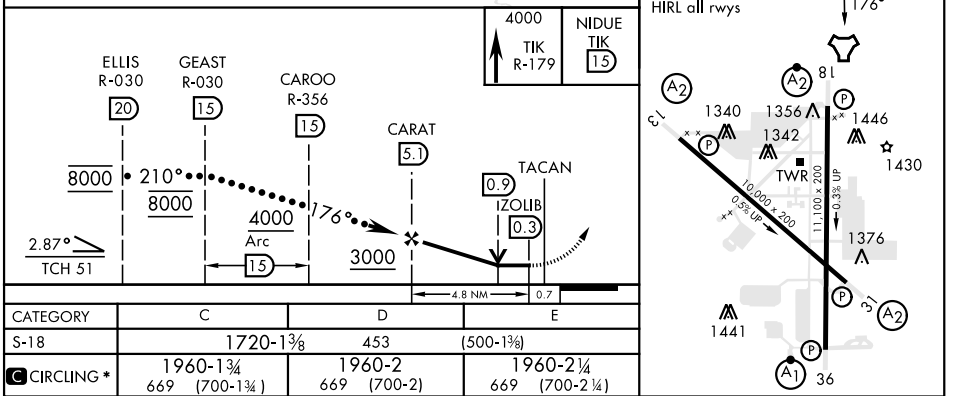
TACAN TIK Chan <b>105</b>	APCH CRS <b>176°</b>	Rwy Idg <b>11,100</b> TDZE <b>1267</b> Arprt Elev <b>1291</b>	AL-299 [USAF]	TINKER AFB (KTIK)
------------------------------	-------------------------	---	---------------	-------------------

\* CAT E circling not authorized in sector S of Rwy 13-31. Circling not authorized to Rwy 18. SALS 
† MISSED APPROACH: Climb to 4000 on TIK TACAN R-179 to NIDUE and hold.

ATIS ★ <b>270.1</b>	OKE CITY APP CON <b>124.2 336.4</b>	TOWER <b>124.45 251.05</b>	GND CON <b>121.8 275.8</b>	CLNC DEL <b>119.7 335.8</b>	ASR
------------------------	--	-------------------------------	-------------------------------	--------------------------------	-----



EMERG SAFE ALT 100 NM 4700



# HI-TACAN Y RWY 18



SC-1, 13 JUN 2024 to 11 JUL 2024

SC-1, 13 JUN 2024 to 11 JUL 2024