

OKLAHOMA CITY, OKLAHOMA

RNAV (GPS) RWY 18

APCH CRS	Rwy Idg	11,100
176°	THRE	1260
	Arprt Elev	1291

(USAF)

TINKER AFB (KTIK)

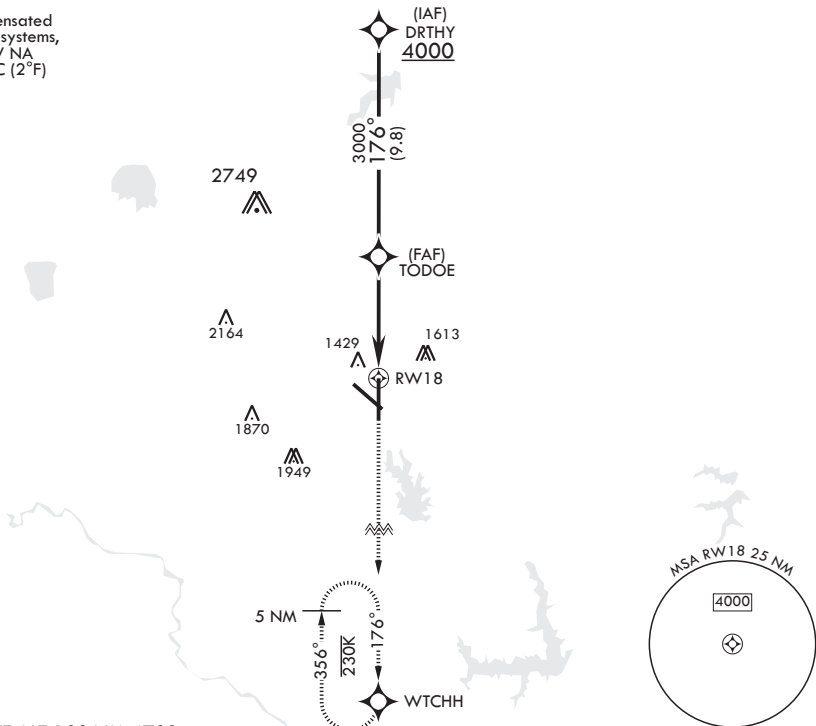
⚠ * Cat E Circling not authorized in sector S of Rwy 13-31 and W of Rwy 18-36.

A2 MISSED APPROACH: Climb to 4000 direct WTCHH waypoint and hold.

ATIS★	OKE CITY APP CON/DEP CON	TOWER	GND CON	CLNC DEL	ASR
270.1	124.2 336.4	124.45 251.05	121.8 275.8	119.7 335.8	

DME/DME RNP-0.3 NA

For uncompensated Baro-VNAV systems, LNAV/VNAV NA below -17°C (2°F)



EMERG SAFE ALT 100 NM 4700

DRTHY 4000		VGSi and descent angles not coincident.		4000	WTCHH	ELEV 1291	THRE 1260
GP 3.00° TCH 50		176°		TODOE		176°	
3000		1.4 NM to RWY18		RWY18		10,000 x 200	
5.2 NM		-0.3% UP		11,100 x 200		BCN 1430	
CATEGORY	A	B	C	D	E	36 (A1)	
LNAV/VNAV DA	1720-1¼		460	(500-1¼)		1441	
LNAV MDA	1720/40	460 (500-¾)	1720/55	460	(500-1)	1425	
C CIRCLING*	1820-1	529 (600-1)	2000-2 709 (800-2)	2040-2½ 749 (800-2½)	2040-2¾ 749 (800-2¾)	HIRL all Rwys	

OKLAHOMA CITY, OKLAHOMA

35°25'N - 97°23'W

TINKER AFB (KTIK)

Orig 13JUN24

RNAV (GPS) RWY 18

SC-1, 13 JUN 2024 to 11 JUL 2024

SC-1, 13 JUN 2024 to 11 JUL 2024