

OKLAHOMA CITY, OKLAHOMA

RNAV (GPS) RWY 36

| | | |
|----------|------------|--------|
| APCH CRS | Rwy Idg | 11,100 |
| 356° | TDZE | 1291 |
| | Arprt Elev | 1291 |

(USAF)

TINKER AFB (KTIK)

⚠ * Cat E Circling not authorized in sector S of Rwy 13-31 and W of Rwy 18-36.

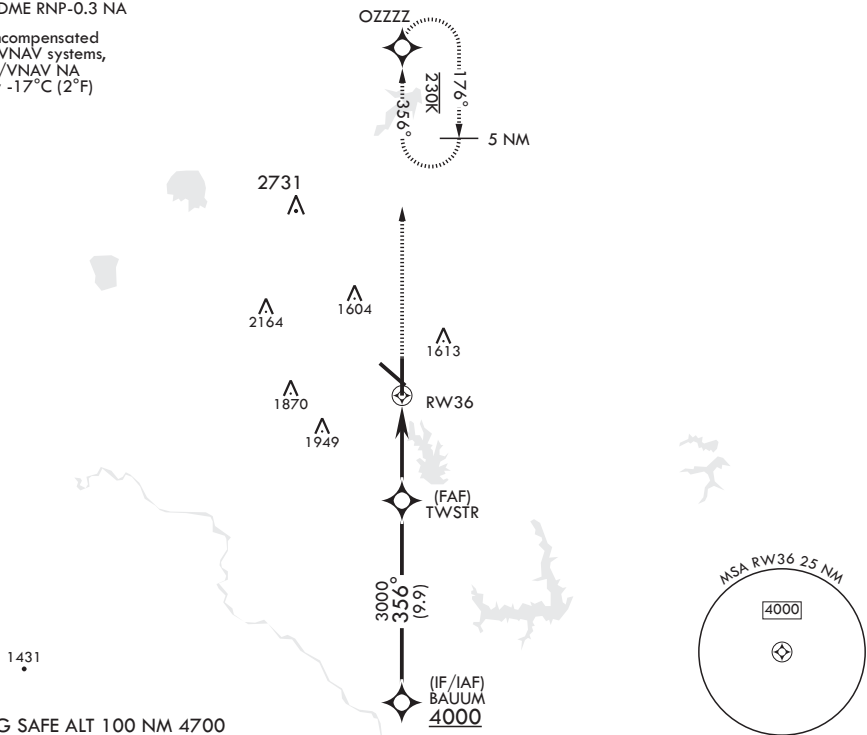


MISSED APPROACH: Climb to 4000 direct OZZZZ waypoint and hold.

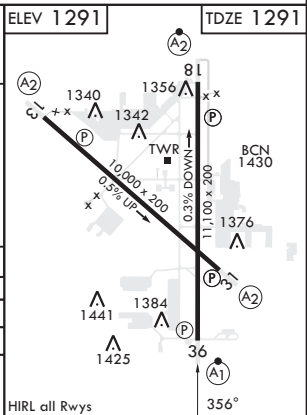
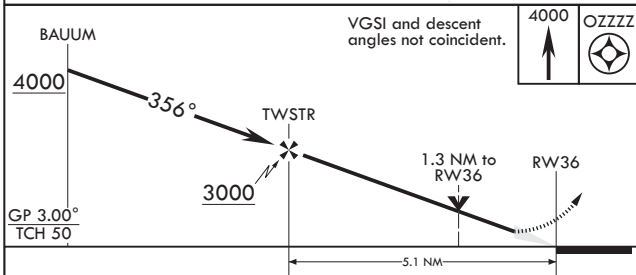
| | | | | | |
|--------|--------------------------|---------------|-------------|-------------|-----|
| ATIS ★ | OKE CITY APP CON/DEP CON | TOWER | GND CON | CLNC DEL | ASR |
| 270.1 | 124.2 336.4 | 124.45 251.05 | 121.8 275.8 | 119.7 335.8 | |

DME/DME RNP-0.3 NA

For uncompensated Baro-VNAV systems, LNAV/VNAV NA below -17°C (2°F)



EMERG SAFE ALT 100 NM 4700



| CATEGORY | A | B | C | D | E |
|--------------------|--------------------|-------------|--------------------|----------------------|----------------------|
| LNAV/VNAV DA | 1739/53 | | 448 | | (500-1) |
| LNAV MDA | 1740/24 | 449 (500-½) | 1740/45 | 449 | (500-¾) |
| C CIRCLING* | 1820-1 529 (600-1) | | 2000-2 709 (800-2) | 2040-2½ 749 (800-2½) | 2040-2¾ 749 (800-2¾) |

OKLAHOMA CITY, OKLAHOMA

35°25'N - 97°23'W

TINKER AFB (KTIK)

Amdt 1 13JUN24

RNAV (GPS) RWY 36

SC-1, 13 JUN 2024 to 11 JUL 2024

SC-1, 13 JUN 2024 to 11 JUL 2024