

TACAN Z RWY 18

TACAN TIK Chan 105	APCH CRS 176°	Rwy ldg 11,100 TDZE 1267 Arprt Elev 1291
------------------------------	-------------------------	---

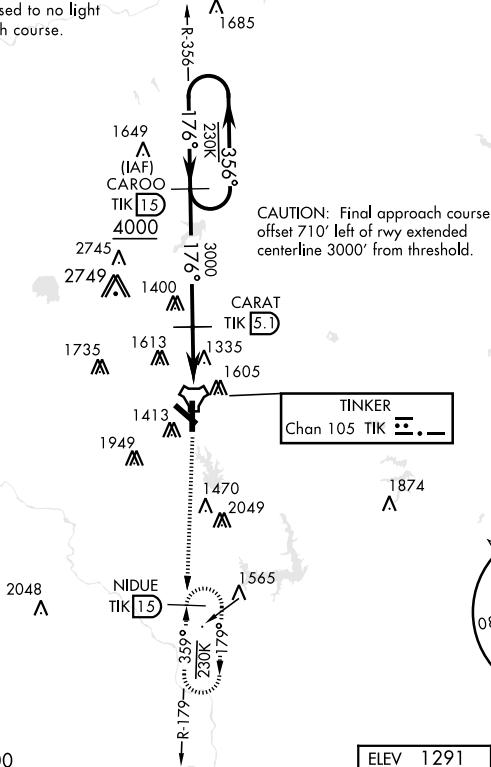
AL-299 [USAF]

TINKER AFB (KTIK)

▼ * CAT E Circling NA in sector S of Rwy 13-31 and W of Rwy 18-36. Circling NA to Rwy 18.	SALSB A2	MISSED APPROACH: Climb to 4000 on TIK TACAN R-179 to NIDUE and hold. Missed approach requires use of RNAV or ATC monitoring.

ATIS ★ 270.1	OKE CITY APP CON 124.2 336.4	TOWER 124.45 251.05	GND CON 121.8 275.8	CLNC DEL 119.7 335.8	ASR
------------------------	--	-------------------------------	-------------------------------	--------------------------------	-----

Straight-in minimum visibility increased to no light minimum due to offset final approach course.

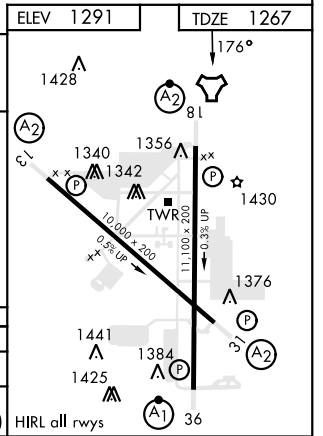
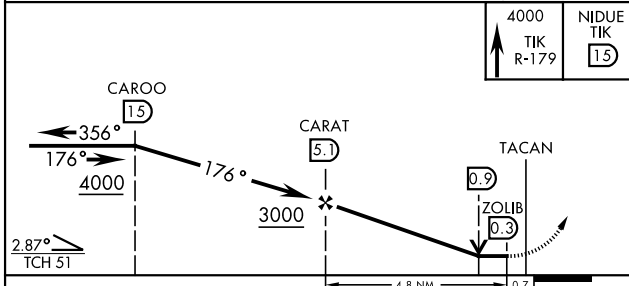


CAUTION: Final approach course offset 710' left of rwy extended centerline 3000' from threshold.

SC-1, 13 JUN 2024 to 11 JUL 2024

SC-1, 13 JUN 2024 to 11 JUL 2024

EMERG SAFE ALT 100 NM 4700



	ELEV 1291		TDZE 1267		
CATEGORY	A	B	C	D	E
S-18	1720/55 453 (500-1)		1720-1½ 453 (500-1½)		
CIRCLING*	1820-1 529 (600-1)	1840-1 549 (600-1)	1960-1¾ 669 (700-1¾)	1960-2 669 (700-2)	1960-2¼ 669 (700-2¼)

OKLAHOMA CITY, OKLAHOMA 35°25'N-97°23'W TINKER AFB (KTIK)

Amdt 5 20APR23

TACAN Z RWY 18