

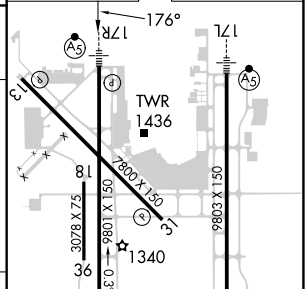
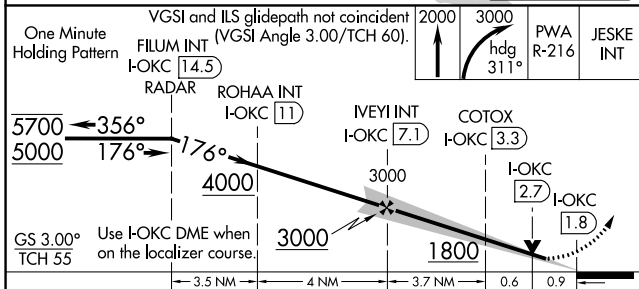
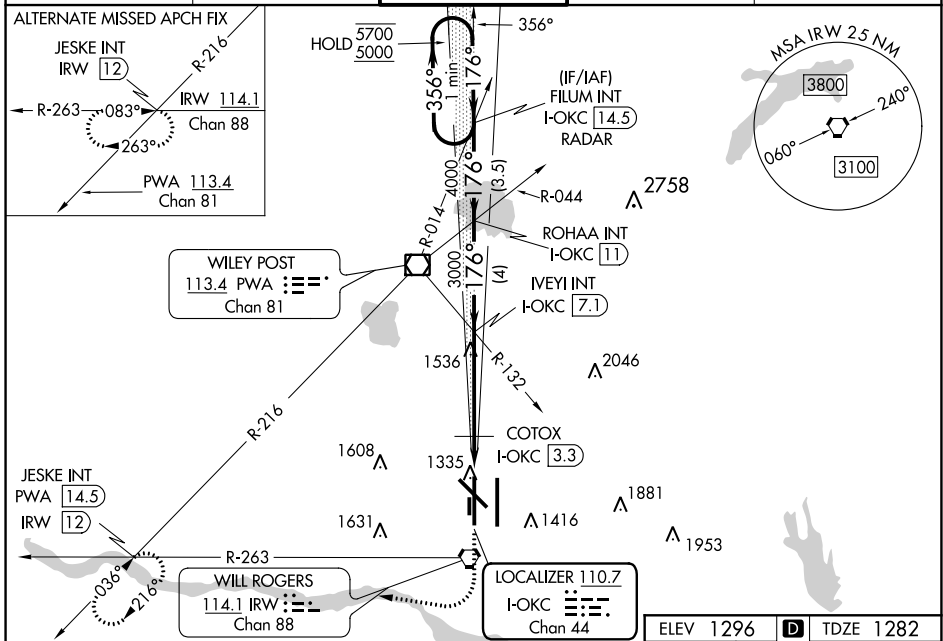
LOC/DME I-OKC 110.7 Chan 44	APP CRS 176°	Rwy Ldg TDZE Apt Elev	9800 1282 1296
--	------------------------	-----------------------------	---

ILS or LOC RWY 17R

WILL ROGERS WORLD (OKC)

<p>RADAR required for procedure entry.</p> <p>Simultaneous approach authorized. For inop ALS, increase S-ILS 17R Cat E visibility to RVR 4000; increase S-LOC 17R Cats C, D and E visibilities to 1$\frac{3}{8}$ SM. * RVR 1800 authorized with use of FD or AP or HUD to DA.</p>		<p>MALS/R</p>	<p>MISSED APPROACH: Climb to 2000 then climbing right turn to 3000 on heading 311° and on PWA VOR/DME R-216 to JESKE INT/PWA 14.5 DME and hold.</p>
--	--	---------------	---

D-ATIS 125.85	OKE CITY APP CON 124.6 266.8	ROGERS TOWER 119.35 269.45	GND CON 121.9 348.6	CLNC DEL 124.35
-------------------------	--	---	-------------------------------	---------------------------



CATEGORY	A	B	C	D	E	
S-ILS 17R*	1482/24		200 (200- $\frac{1}{2}$)			
S-LOC 17R	1800/24	518 (600- $\frac{1}{2}$)	1800/55		518 (600-1)	
CIRCLING	1800-1	504 (600-1)	1960-1 $\frac{3}{4}$	2000-2 $\frac{1}{4}$	2240-3	
			664 (700-1 $\frac{3}{4}$)	704 (800-2 $\frac{1}{4}$)	944 (1000-3)	
COTOX FIX MINIMUMS						
S-LOC 17R	1620/24	338 (400- $\frac{1}{2}$)	1620/26	338 (400- $\frac{1}{2}$)		
CIRCLING	1740-1	1760-1	1960-1 $\frac{3}{4}$	2000-2 $\frac{1}{4}$	2240-3	
	444 (500-1)	464 (500-1)	664 (700-1 $\frac{3}{4}$)	704 (800-2 $\frac{1}{4}$)	944 (1000-3)	
<p>TDZ/CL Rwy 35R</p> <p>MIRL Rwy 13-31</p> <p>REIL Rwys 13 and 31</p> <p>HIRL Rwys 17L-35R and 17R-35L</p> <p>FAF to MAP 5.2 NM</p>						
Knots		60	90	120	150	180
Min:Sec		5:12	3:28	2:36	2:05	1:44

SC-1, 13 JUN 2024 to 11 JUL 2024

SC-1, 13 JUN 2024 to 11 JUL 2024