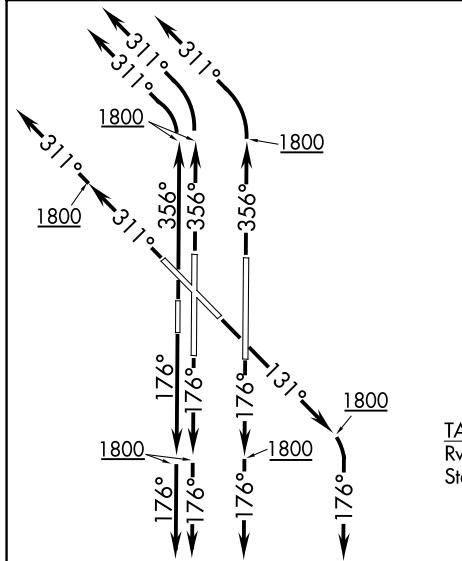


# MUDDE THREE DEPARTURE (RNAV)

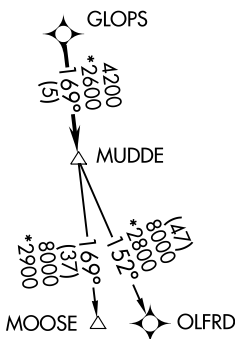
**TOP ALTITUDE:  
ASSIGNED BY ATC**

D-ATIS 125.85  
CLNC DEL 124.35  
GND CON 121.9 348.6  
ROGERS TOWER 119.35 269.45  
OKE CITY DEP CON 124.6 266.8



**TAKEOFF MINIMUMS:**  
Rwy 13, 17L/R, 18, 31, 35L/R, 36:  
Standard with minimum climb of 500' per NM to 1800.

NOTE: RADAR required.  
NOTE: DME/DME/IRU or GPS required.  
NOTE: RNAV 1.



NOTE: Chart not to scale.

## DEPARTURE ROUTE DESCRIPTION

**TAKEOFF RWY 13:** Climb heading 131° to 1800, then right turn heading 176° or as assigned by ATC, expect RADAR vectors to GLOPS, thence. . . .

**TAKEOFF RWY 17L/R, 18:** Climb heading 176° to 1800, then heading 176° or as assigned by ATC, expect RADAR vectors to GLOPS, thence. . . .

**TAKEOFF RWY 31:** Climb heading 311° to 1800, then heading 311° or as assigned by ATC, expect RADAR vectors to GLOPS, thence. . . .

**TAKEOFF RWY 35L/R, 36:** Climb heading 356° to 1800, then left turn heading 311° or as assigned by ATC, expect RADAR vectors to GLOPS, thence. . . .

. . . on track 169° to MUDDE, then on (transition). Maintain 5000 or as assigned by ATC. Expect filed altitude 10 minutes after departure.

**MOOSE TRANSITION (MUDDE3.MOOSE):**  
**OLFRD TRANSITION (MUDDE3.OLFRD):**