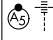


APP CRS	Rwy Idg	9802
176°	TDZE	1287
	Apt Elev	1296

RNAV (RNP) Z RWY 17L

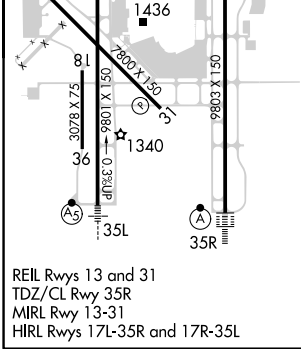
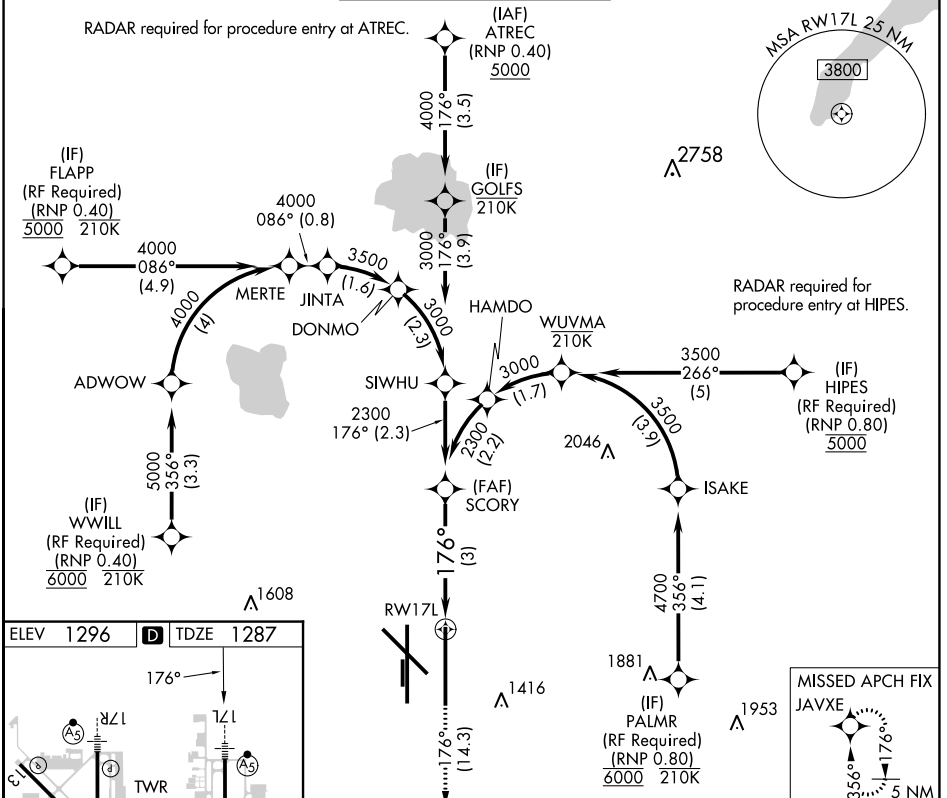
WILL ROGERS WORLD (OKC)

ASR For uncompensated Baro-VNAV systems, procedure NA below -12°C (11°F) or above 54°C (130°F). GPS required. Simultaneous approach authorized with Rwy 17R. Use of FD or AP providing RNAV track guidance required during simultaneous operations.

MALSR 

MISSED APPROACH: Climb to 5000 on track 176° to JAVXE and hold, continue climb-in-hold to 5000.

D-ATIS	OKC CITY APP CON	ROGERS TOWER	GND CON	CLNC DEL
125.85	124.6 266.8	119.35 269.45	121.9 348.6	124.35



5000 ↑ tr 176° JAVXE

See planview for multiple IF locations.

SCORY 2300

RW17L 176° 2300

GP 3.00° TCH 59

CATEGORY	A	B	C	D
RNP 0.11 DA		1555/24	268 (300-½)	
RNP 0.20 DA		1643/34	356 (400-¾)	
RNP 0.30 DA		1724/49	437 (500-1)	

AUTHORIZATION REQUIRED

SC-1, 13 JUN 2024 to 11 JUL 2024

SC-1, 13 JUN 2024 to 11 JUL 2024