

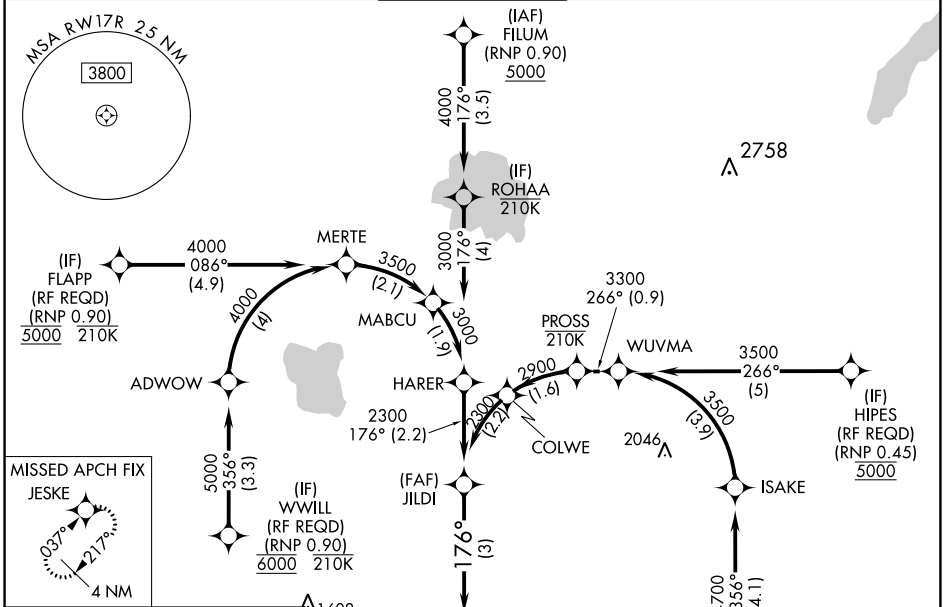
# RNAV (RNP) Z RWY 17R

WILL ROGERS WORLD (OKC)

APP CRS	Rwy Idg	<b>9800</b>
<b>176°</b>	TDZE	<b>1282</b>
	Apt Elev	<b>1296</b>

RNP AR APCH.	MALSR	MISSED APPROACH: Climb to 2000 then climbing right turn to 3000 direct JESKE and hold.
<p>▼ For uncompensated Baro-VNAV systems, procedure NA below -13°C or above 54°C.</p> <p>ASR For inop ALS, increase RNP 0.20 all Cats visibility to RVR 4500 and RNP 0.30 all Cats visibility to RVR 6000. Simultaneous approach authorized. Use of FD or AP required during simultaneous operations.</p>		

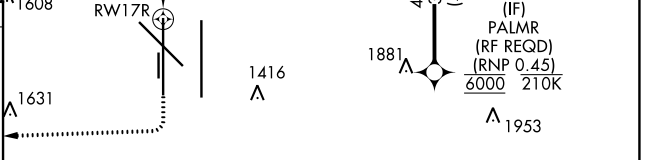
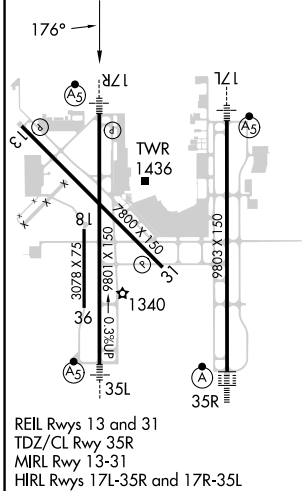
D-ATIS	OKE CITY APP CON	ROGERS TOWER	GND CON	CLNC DEL
<b>125.85</b>	<b>124.6 266.8</b>	<b>119.35 269.45</b>	<b>121.9 348.6</b>	<b>124.35</b>



SC-1, 13 JUN 2024 to 11 JUL 2024

SC-1, 13 JUN 2024 to 11 JUL 2024

ELEV 1296	<b>D</b>	TDZE 1282
-----------	----------	-----------



VGSi and RNAV glidepath not coincident (VGSi Angle 3.00/TCH 60).			
2000	3000	JESKE	
<p>GP 3.00° TCH 55</p> <p>See planview for multiple IF locations.</p> <p>3 NM</p>			
CATEGORY	A	B	C
RNP 0.20 DA		1559/24	277 (300-½)
RNP 0.30 DA		1677/35	395 (400-⅓)