

# RNAV (RNP) Z RWY 35L

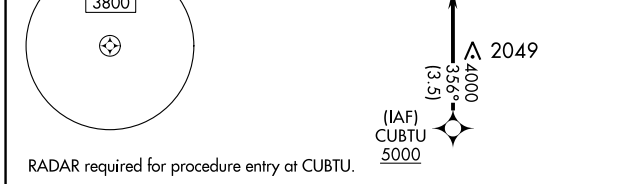
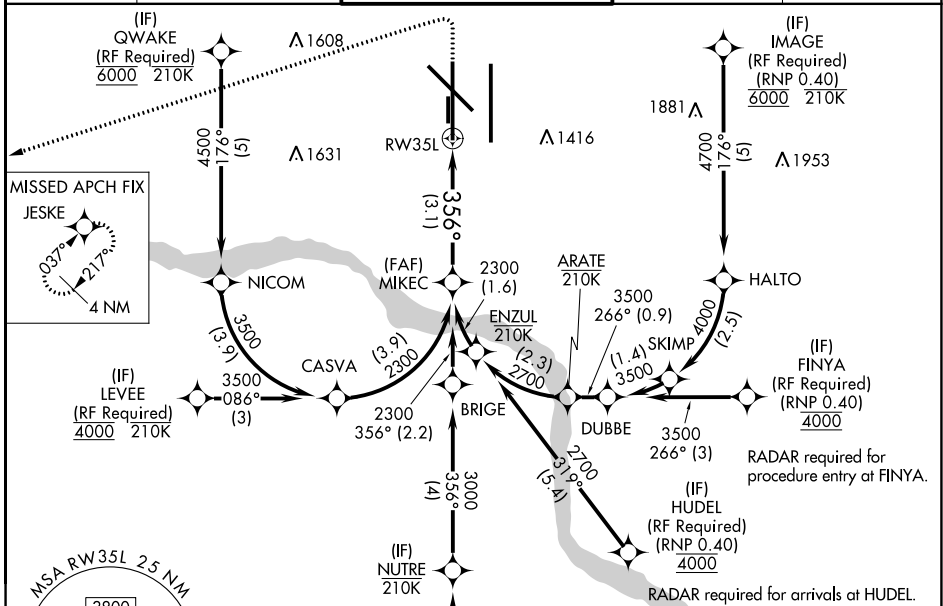
WILL ROGERS WORLD (OKC)

APP CRS <b>356°</b>	Rwy Idg <b>9800</b>
	TDZE <b>1276</b>
	Apt Elev <b>1296</b>

**ASR** For uncompensated Baro-VNAV systems, procedure NA below -12°C (11°F) or above 54°C (130°F). GPS required. Simultaneous approach authorized with Rwy 35R. Use of FD or AP providing RNAV track guidance required during simultaneous operations. For inop ALS, increase RNP 0.30 all Cats visibility to 1/4 SM.

**MALSR** MISSED APPROACH: Climb to 2000 then climbing left turn to 3000 direct JESKE and hold.

D-ATIS <b>125.85</b>	OKE CITY APP CON <b>124.6 266.8</b>	ROGERS TOWER <b>119.35 269.45</b>	GND CON <b>121.9 348.6</b>	CLNC DEL <b>124.35</b>
-------------------------	--	--------------------------------------	-------------------------------	---------------------------



ELEV 1296 **D** TDZE 1276

REIL Rwys 13 and 31  
TDZ/CL Rwy 35R  
MIRL Rwy 13-31  
HIRL Rwys 17L-35R and 17R-35L

TWR 1436

35L

356°

MIKEC 2300	See planview for multiple IF locations.		2000	3000	JESKE
2300	356°		RWY 35L		
GP 3.00° TCH 49	3.1 NM				
CATEGORY	A	B	C	D	
RNP 0.30 DA	1646/38		370 (400-3/4)		

## AUTHORIZATION REQUIRED

SC-1, 13 JUN 2024 to 11 JUL 2024

SC-1, 13 JUN 2024 to 11 JUL 2024