


WAAS CH <b>50102</b> <b>W17A</b>	APP CRS <b>176°</b>	Rwy Idg TDZE <b>1282</b> Apt Elev <b>1296</b>	<b>9800</b>
--	------------------------	---	-------------

# RNAV (GPS) Y RWY 17R

WILL ROGERS WORLD (OKC)

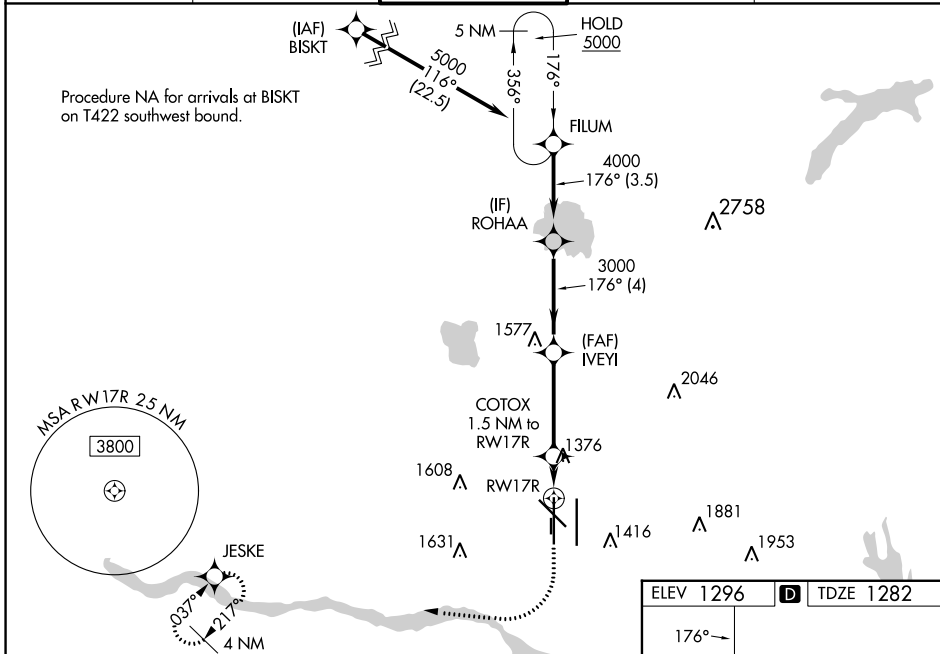
RNP APCH-GPS.

Simultaneous approach authorized. LNAV procedure NA during simultaneous operations. Use of FD or AP required during simultaneous operations. For uncompensated Baro-VNAV systems, LNAV/VNAV NA below -12°C or above 54°C. For inop ALS, increase LNAV/VNAV all Cats visibility to RVR 4500, and LNAV Cats C and D visibility to RVR 5500. \* RVR 1800 authorized with use of FD or AP or HUD to DA.

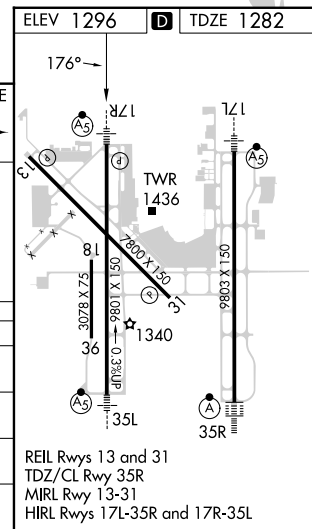
MALSR 

MISSED APPROACH: Climb to 2000 then climbing right turn to 3000 direct JESKE and hold.

D-ATIS <b>125.85</b>	OKE CITY APP CON <b>124.6 266.8</b>	<b>ROGERS TOWER</b> <b>119.35 269.45</b>	GND CON <b>121.9 348.6</b>	CLNC DEL <b>124.35</b>
-------------------------	--	---	-------------------------------	---------------------------



GP 3.00° TCH 55	FILUM	ROHAA	IVEYI	COTOX	JESKE
	5000	4000	3000	1800	2000
	3.5 NM	4 NM	3.7 NM	0.6 NM	0.9 NM
CATEGORY	A	B	C	D	
LPV DA*		1482/24	200 (200-½)		
LNAV/VNAV DA		1550/24	268 (300-½)		
LNAV MDA	1640/24	358 (400-½)	1640/30	358 (400-¾)	
CIRCLING	1740-1 444 (500-1)	1760-1 464 (500-1)	1960-1¾ 664 (700-1¾)	2000-2¼ 704 (800-2¼)	



SC-1, 13 JUN 2024 to 11 JUL 2024

SC-1, 13 JUN 2024 to 11 JUL 2024