

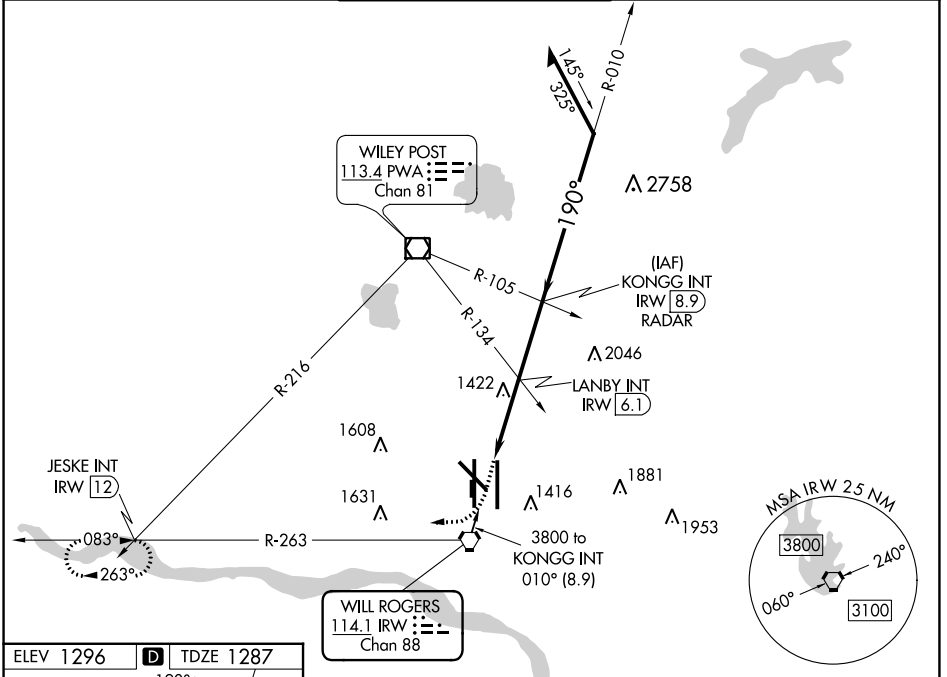
VOR IRW 114.1 Chan 88	APP CRS 190°	Rwy Idg TDZE Apt Elev	9802 1287 1296
---	------------------------	-----------------------------	---

VOR RWY 17L

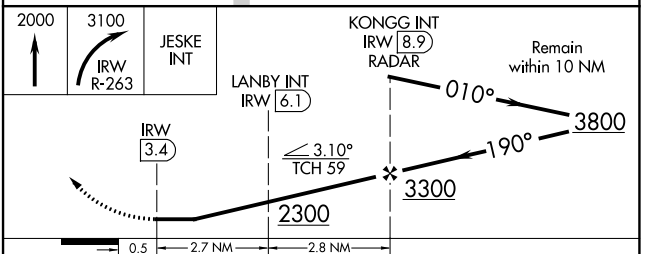
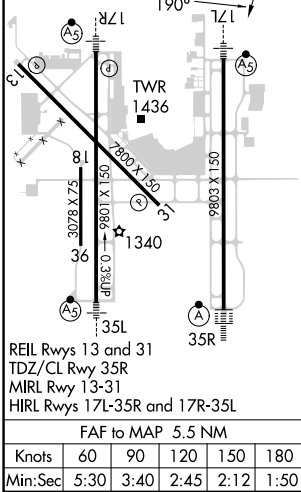
WILL ROGERS WORLD (OKC)

⚠ Inop table does not apply to S-17L Cats B, C, D, and E. Cat E procedure turn NA. For inop ALS, increase LANBY Fix Minimums S-17L visibilities ASR
⚠ MISSED APPROACH: Climb to 2000 then climbing right turn to 3100 on IRW VORTAC R-263 to JESKE INT/12 IRW DME and hold.

D-ATIS 125.85	OKE CITY APP CON 124.6 266.8	ROGERS TOWER 119.35 269.45	GND CON 121.9 348.6	CLNC DEL 124.35
-------------------------	--	--------------------------------------	-------------------------------	---------------------------



ELEV 1296	D TDZE 1287
-----------	--------------------



CATEGORY	A	B	C	D	E
S-17L	2300/40 1013 (1100-3/4)	2300-1 1013 (1100-1)	2300-2 1/2	1013 (1100-2 1/2)	
C CIRCLING	2300-1 1/4 1004 (1100-1 1/4)	2300-1 1/2 1004 (1100-1 1/2)	2300-3	1004 (1100-3)	
LANBY FIX MINIMUMS					
S-17L	1680/24	393 (400-1/2)	1680/40 393 (400-3/4)	1680/50 393 (400-1)	1680-1 1/2 393 (400-1 1/2)
C CIRCLING	1760-1	464 (500-1)	1960-1 3/4 664 (700-1 1/4)	2000-2 1/4 704 (800-2 1/4)	2240-3 944 (1000-3)

SC-1, 13 JUN 2024 to 11 JUL 2024

SC-1, 13 JUN 2024 to 11 JUL 2024