

WAAS CH <b>45739</b> <b>W22A</b>	APP CRS <b>223°</b>	Rwy Idg TDZE Apt Elev	<b>5132</b> <b>1087</b> <b>1087</b>
--	------------------------	-----------------------------	---

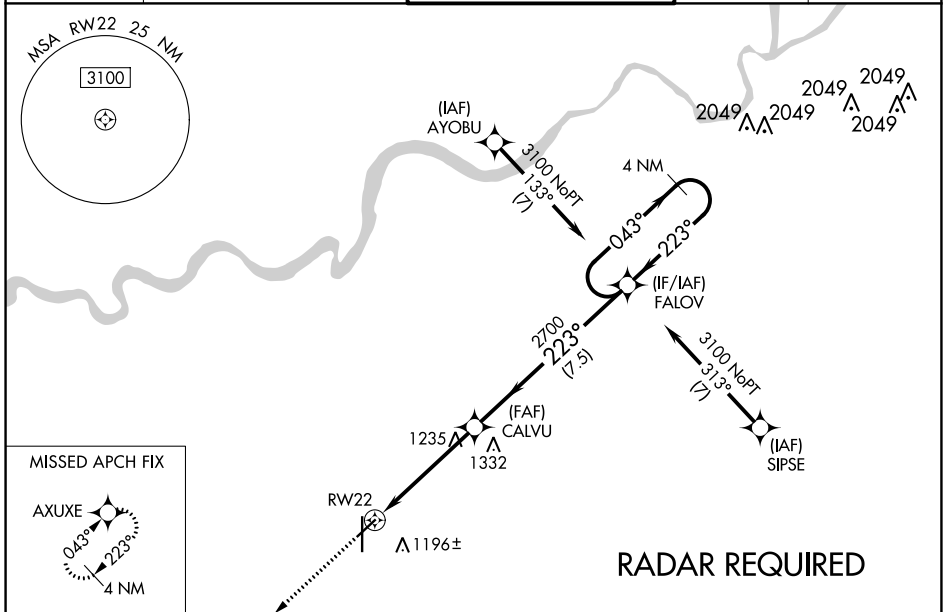
# RNAV (GPS) RWY 22

NEW CENTURY AIRCENTER (IXD)

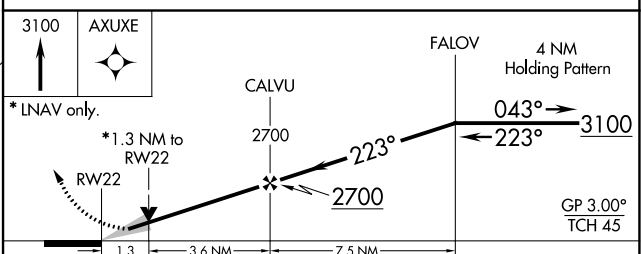
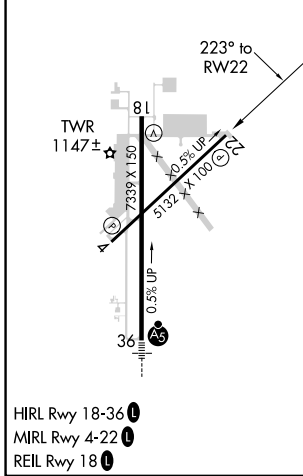
**⚠** For uncompensated Baro-VNAV systems, LNAV/VNAV NA below -17°C (-2°F) or above 54°C (130°F). Baro-VNAV and VDP NA when using Johnson County Exec altimeter setting. DME/DME RNP-0.3 NA. When local altimeter setting not received, use Johnson County Exec altimeter setting: increase LPV DA to 1355 feet, and LNAV/VNAV DA to 1368 feet, and all MDA 20 feet.

MISSED APPROACH: Climb to 3100 direct AXUXE and hold.

ASOS <b>135.325</b>	KANSAS CITY APP CON <b>118.9 251.075</b>	NEW CENTURY TOWER ★ <b>133.0 (CTAF) 0</b>	GND CON <b>124.3</b>	UNICOM <b>122.95</b>
------------------------	---	--	-------------------------	-------------------------



ELEV 1087	TDZE 1087
-----------	-----------



CATEGORY	A	B	C	D
LPV DA		1337-1	250 (300-1)	
LNAV/VNAV DA		1350-1	263 (300-1)	
LNAV MDA	1540-1	453 (500-1)	1540-1½	453 (500-1½)
<b>C</b> CIRCLING	1560-1	473 (500-1)	1580-1½ 493 (500-1½)	1640-2 553 (600-2)

NC-2, 13 JUN 2024 to 11 JUL 2024

NC-2, 13 JUN 2024 to 11 JUL 2024