


WAAS CH 81807 W36A	APP CRS 356°	Rwy Idg 7339 TDZE 1066 Apt Elev 1087
----------------------------------------	------------------------	-----------------------------------------------------------------

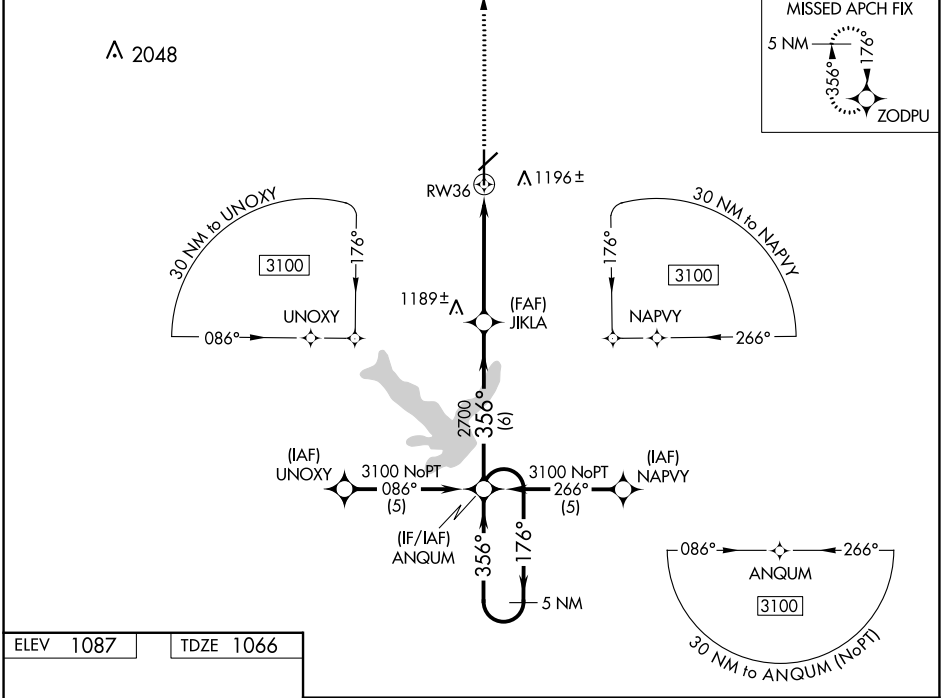
RNAV (GPS) RWY 36

NEW CENTURY AIRCENTER (IXD)

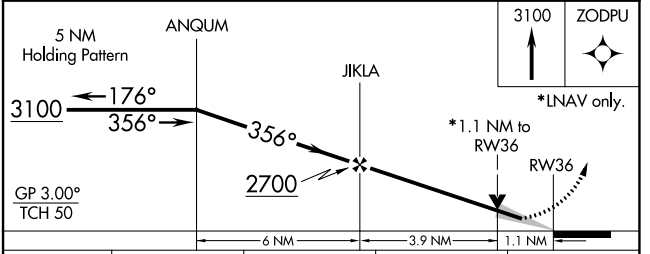
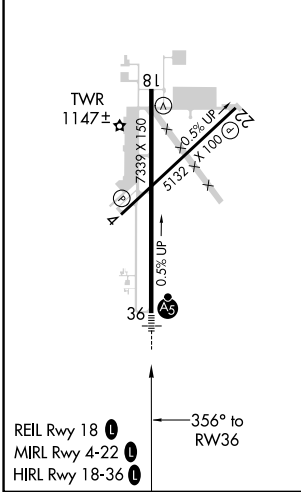
⚠ DME/DME RNP-0.3 NA. For inop MALS, increase LNAV Cat D visibility to 1 ½ and LPV visibility to 1 all Cats. If local altimeter setting not received, use Johnson County Exec altimeter setting and increase all DA/MDAs 20 feet. VDP NA with Johnson County Exec altimeter setting.

MALS  MISSED APPROACH: Climb to 3100 direct ZODPU and hold.

ASOS 135.325	KANSAS CITY APP CON 118.9 251.075	NEW CENTURY TOWER * 133.0 (CTAF) 0	GND CON 124.3	UNICOM 122.95
------------------------	---------------------------------------------	----------------------------------------------	-------------------------	-------------------------



ELEV 1087	TDZE 1066
-----------	-----------



CATEGORY	A	B	C	D
LPV DA	1316-½ 250 (300-½)			
LNAV/VNAV DA	NA			
LNAV MDA	1440-½ 374 (400-½)		1440-1 374 (400-1)	
C CIRCLING	1560-1 473 (500-1)		1580-1½ 493 (500-1½) 1640-2 553 (600-2)	

NC-2, 13 JUN 2024 to 11 JUL 2024

NC-2, 13 JUN 2024 to 11 JUL 2024