

(RACER8.MCI) 24137

RACER EIGHT DEPARTURE

AL-302 (FAA)

NEW CENTURY AIRCENTER (IXD)
OLATHE, KANSAS

KANSAS CITY DEP CON
118.9 251.075

RADAR required.

TOP ALTITUDE:
10000

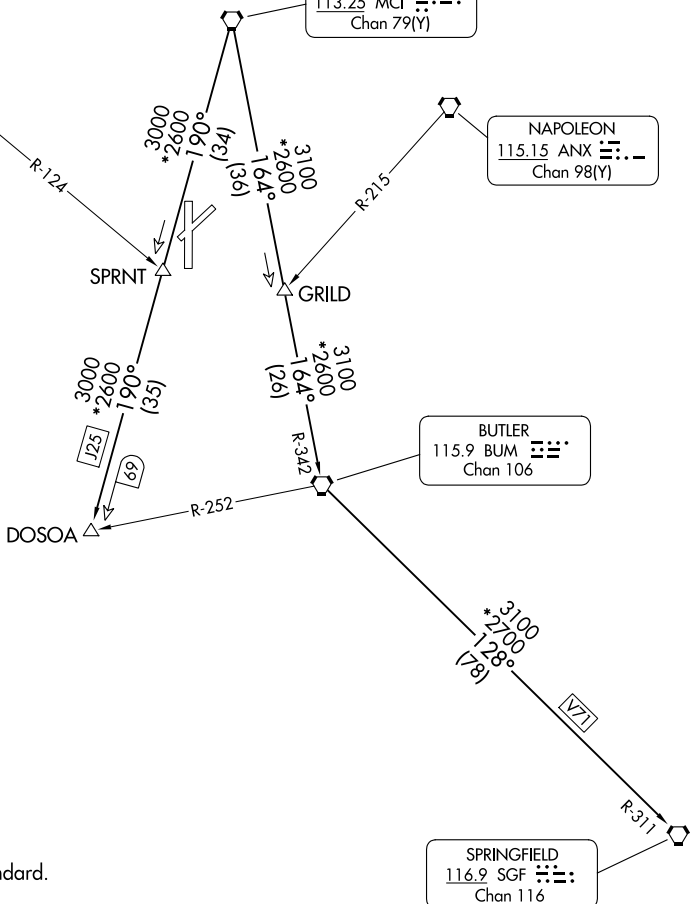
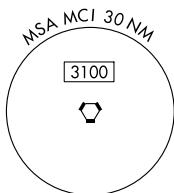
KANSAS CITY
113.25 MCI Chan 79(Y)

TOPEKA
117.8 TOP Chan 125

NAPOLEON
115.15 ANX Chan 98(Y)

BUTLER
115.9 BUM Chan 106

SPRINGFIELD
116.9 SGF Chan 116



TAKEOFF MINIMUMS

Rwys 4, 18, 22, 36: Standard.

NOTE: Chart not to scale.

DEPARTURE ROUTE DESCRIPTION

TAKEOFF ALL RUNWAYS: Climb on assigned heading for RADAR vectors to appropriate route. Maintain 10000 or as assigned by ATC, expect filed altitude 10 minutes after departure.

BUTLER TRANSITION (RACER8.BUM): From over MCI VORTAC on MCI R-164 and BUM R-342 to BUM VORTAC.

DOSOA TRANSITION (RACER8.DOSOA): From over MCI VORTAC on MCI R-190 to DOSOA.

SPRINGFIELD TRANSITION (RACER8.SGF): From over MCI VORTAC on MCI R-164 and BUM R-342 to BUM VORTAC, then on BUM R-128 and SGF R-311 to SGF VORTAC.

RACER EIGHT DEPARTURE

(RACER8.MCI) 05OCT23

OLATHE, KANSAS
NEW CENTURY AIRCENTER (IXD)

NC-2, 13 JUN 2024 to 11 JUL 2024

NC-2, 13 JUN 2024 to 11 JUL 2024