

ILS or LOC RWY 7

EXEC (ORL)

LOC I-ORL	APP CRS	Rwy Idg	5604
109.9	073°	TDZE	109
		Apt Elev	113

RADAR required for procedure entry. DME or RADAR required.

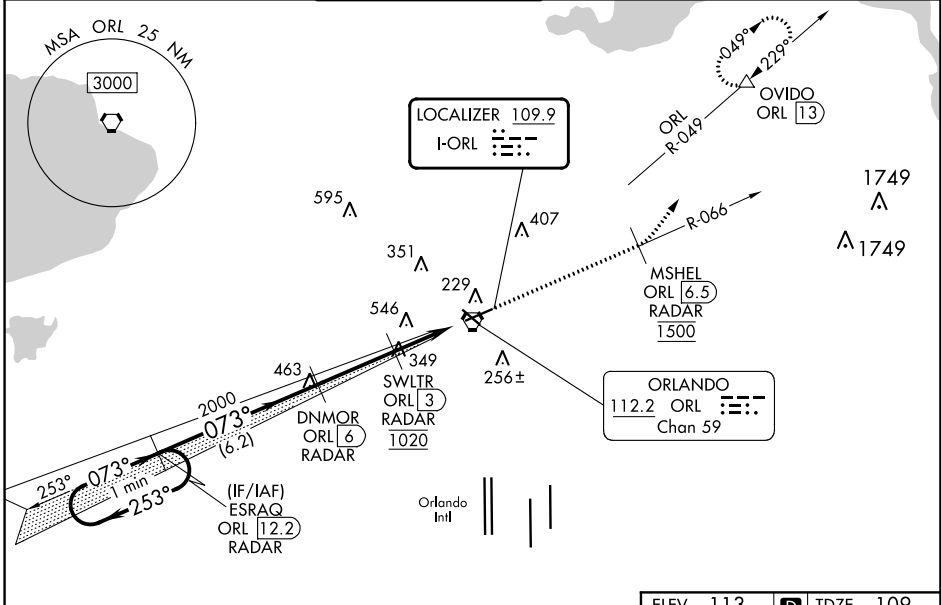
⚠ Circling Rwy 31 NA at night. In minimum visibility conditions, bright lights on highway 1/2 mile south of airport may be mistaken for runway lights. For inop ALS, increase S-ILS 7 all Cats visibility to RVR 4500 and S-LOC 7 Cats A/B visibility to RVR 5500. Rwy 7 helicopter visibility reduction below 3/4 SM NA. Autopilot coupled approach NA below 320.

MALSR



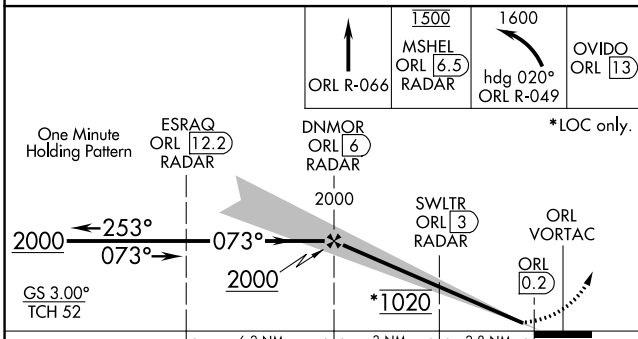
MISSED APPROACH: Climb on ORL VORTAC R-066 to cross MSHEL/ORL 6.5 DME/RADAR at 1500 then climbing left turn to 1600 on heading 020° and ORL VORTAC R-049 to OVIDO/ORL 13 DME and hold.

ATIS	ORLANDO APP CON	EXECUTIVE TOWER ★	GND CON	CLNC DEL	UNICOM
127.25	124.8 351.9	118.7 (CTAF) 0 239.0	121.4 239.0	128.45	122.95

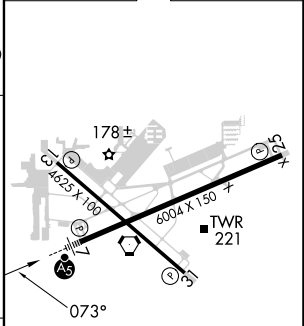


SE-3, 13 JUN 2024 to 11 JUL 2024

SE-3, 13 JUN 2024 to 11 JUL 2024



ELEV	113	TDZE	109
------	-----	------	-----



CATEGORY	A	B	C	D
S-ILS 7	391/40 282 (300-3/4)			
S-LOC 7	660/40	551 (600-3/4)	660/60	551 (600-1 1/4)
C CIRCLING	660-1 547 (600-1)	680-1 567 (600-1)	860-2 1/4 747 (800-2 1/4)	860-2 1/2 747 (800-2 1/2)

REIL Rwy 13 and 31					
HIRL Rwy 7-25 and 13-31					
FAF to MAP 5.8 NM					
Knots	60	90	120	150	180
Min:Sec	5:48	3:52	2:54	2:19	1:56