

# HI-ILS or LOC Y RWY 32R

LOC I-PAM <b>110.1</b>	APCH CRS <b>319°</b>	Rwy ldg <b>10,008</b> TDZE <b>14</b> Arpt Elev <b>17</b>
---------------------------	-------------------------	--

[USAF]

TYNDALL AFB (KPAM)

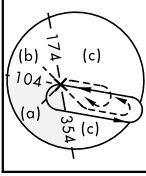
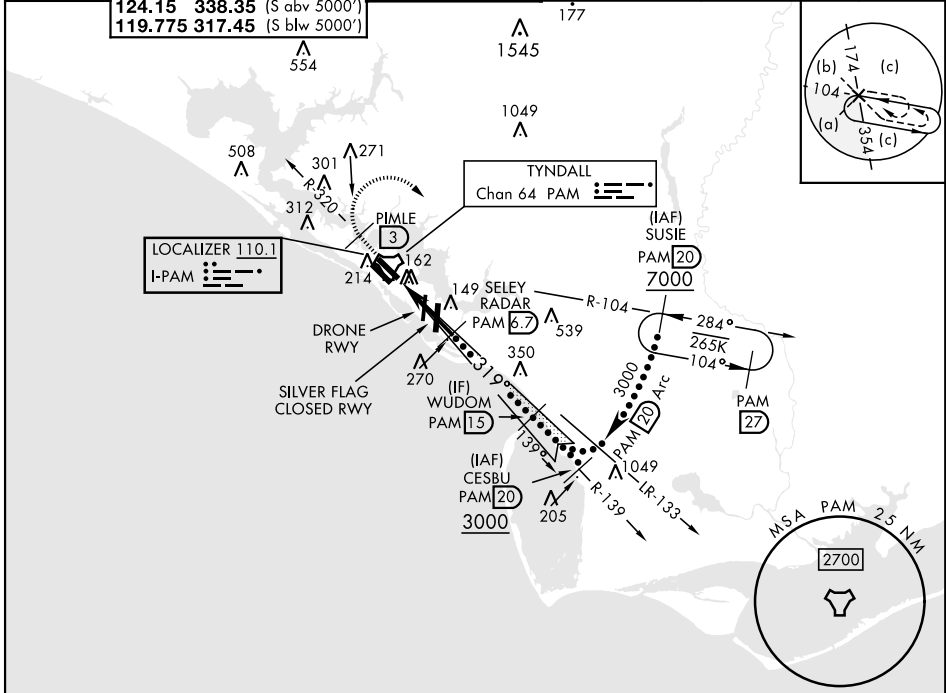
DME or RADAR required.

▼ \*When ALS inop, increase RVR to 40, vis to ¾ mile.  
\*\*When ALS inop, increase RVR to 60, vis to 1½ miles.



MISSED APPROACH: Track outbound PAM R-320 to 3 DME (PIMLE), then turn right to join PAM TACAN R-104 to 20 DME (SUSIE) and hold. Maintain 3000.

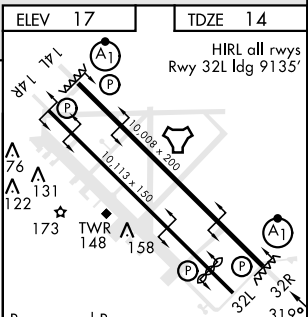
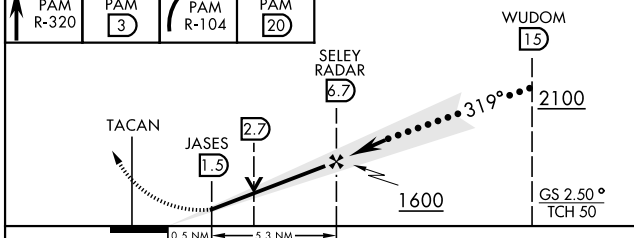
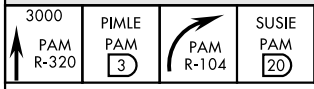
ATIS ★ <b>254.4</b>	APP CON <b>125.2 392.1</b> (N abv 5000') <b>120.825 379.3</b> (N blw 5000') <b>124.15 338.35</b> (S abv 5000') <b>119.775 317.45</b> (S blw 5000')	TOWER ★ <b>133.95 263.15</b>	GND CON <b>121.9 259.3</b>	CLNC DEL <b>118.05 348.7</b>	ASR/PAR
------------------------	--	---------------------------------	-------------------------------	---------------------------------	---------



SE-3, 13 JUN 2024 to 11 JUL 2024

SE-3, 13 JUN 2024 to 11 JUL 2024

EMERG SAFE ALT 100 NM 3300



Recommend Rwy 14L-32R for apch end engagement of A-Gear.

FAF to MAP 5.2 NM

Knots	120	140	160	180	200
Min:Sec	2:36	2:14	1:57	1:44	1:34

CATEGORY	C	D	E
S-ILS 32R*	214/24	200 (200-½)	
S-LOC 32R**	540/55	526 (600-1)	
CIRCLING	540-1½ 523 (600-1½)	580-2 563 (600-2)	620-2¼ 603 (700-2¼)

# HI-ILS or LOC Y RWY 32R