

HI-TACAN Y RWY 32R

TACAN PAM Chan 64	APCH CRS 326°	Rwy Ldg 10,008 TDZE 14 Arpt Elev 17
-----------------------------	-------------------------	--

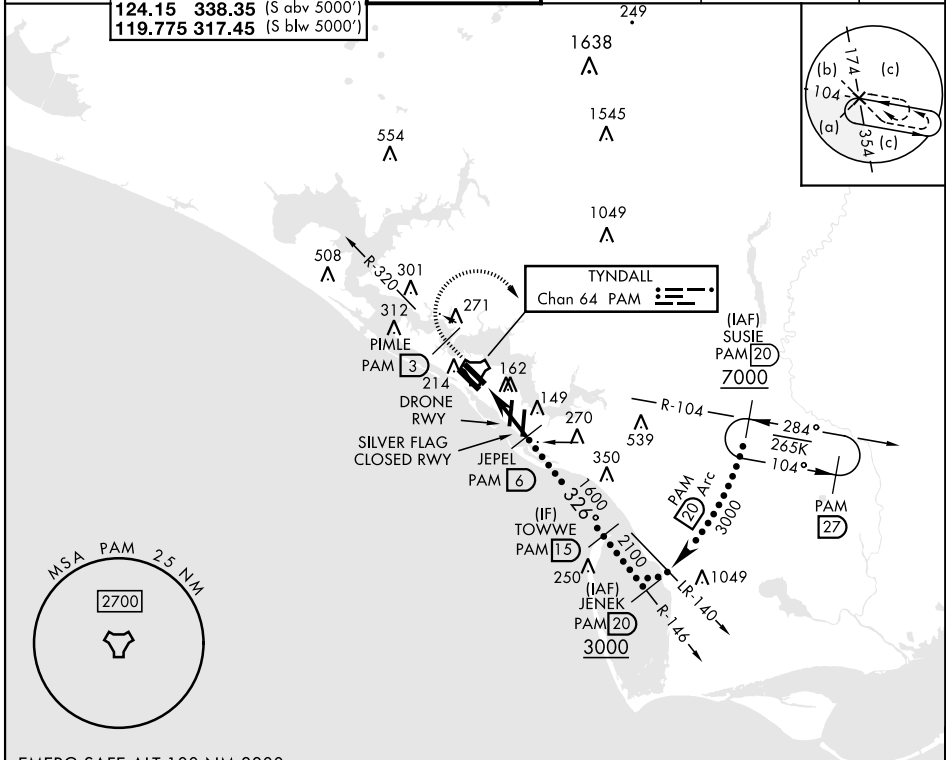
[USAF]

TYNDALL AFB (KPAM)

ALSIF-1
 * When ALS inop, increase vis to 1 3/8 miles.

MISSED APPROACH: Track outbound PAM TACAN R-320 to 3 DME (PIMLE), then turn right to join PAM R-104 to 20 DME (SUSIE) and hold. Maintain 3000.

ATIS * 254.4	APP CON 125.2 392.1 (N abv 5000') 120.825 379.3 (N blw 5000') 124.15 338.35 (S abv 5000') 119.775 317.45 (S blw 5000')	TOWER * 133.95 263.15	GND CON 121.9 259.3	CLNC DEL 118.05 348.7	ASR/PAR
-------------------------------	---	--	--------------------------------------	--	----------------

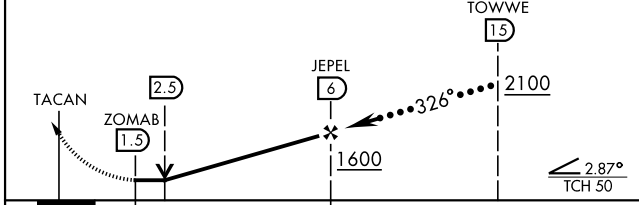


SE-3, 13 JUN 2024 to 11 JUL 2024

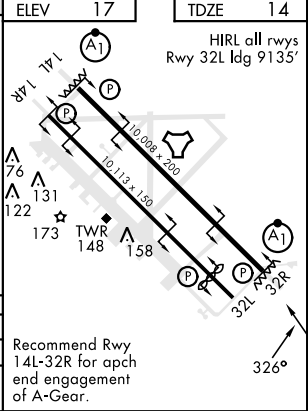
SE-3, 13 JUN 2024 to 11 JUL 2024

EMERG SAFE ALT 100 NM 3300

3000 PAM R-320 PIMLE PAM 3 PAM R-104 SUSIE PAM 20	VGSIs and descent angles not coincident (VGSIs Angle 2.50/TCH 50).	ELEV 17 TDZE 14 HIRL all rwys Rwy 32L Ldg 9135'
--	--	--



CATEGORY	C	D	E
S-32R *	480/50	466 (500-1)	
CIRCLING	540-1 1/2 523 (600-1 1/2)	580-2 563 (600-2)	620-2 1/4 603 (700-2 1/4)



HI-TACAN Y RWY 32R