

PANAMA CITY, FLORIDA

ILS or LOC Z RWY 14L

LOC I-TYF 111.5	APCH CRS 138°	Rwy Idg 10,008 TDZE 14 Arpt Elev 17
---------------------------	-------------------------	--

[USAF]

TYNDALL AFB (KPAM)

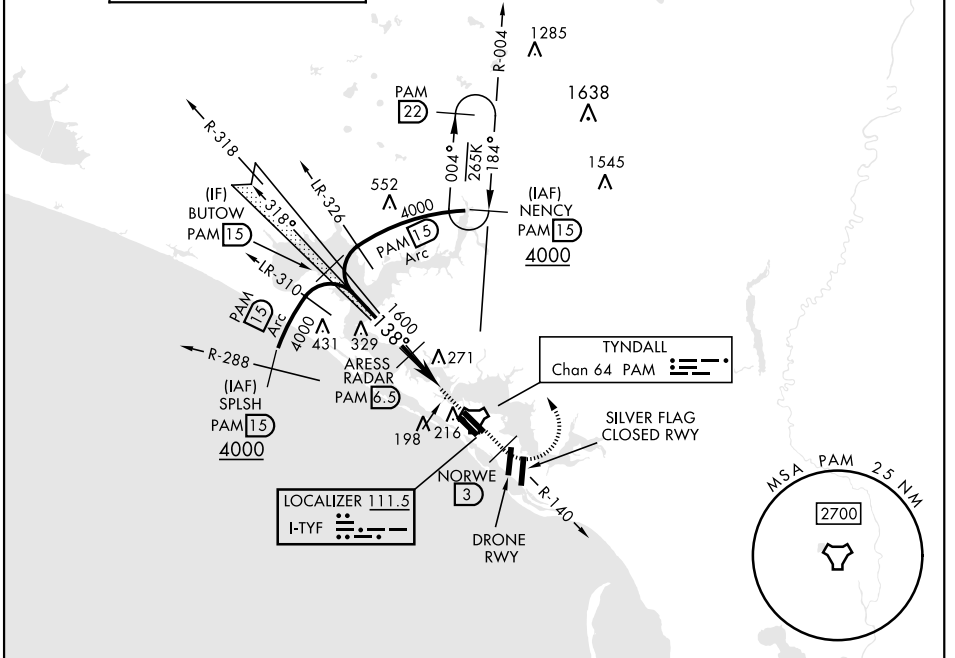
DME or RADAR required

▼ * When ALS inop, increase RVR to 40 and vis to 3/8 mile.
 ** When ALS inop, increase CAT AB RVR to 55, vis to 1 mile;
 CAT CDE vis to 1 3/8 miles.



MISSED APPROACH: Track outbound PAM TACAN R-140 to 3 DME (NORWE), then turn left to join PAM R-004 to 15 DME (NENCY) and hold. Maintain 3000.

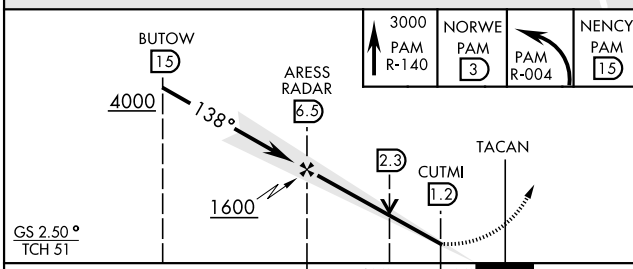
ATIS ★ 254.4	APP CON 125.2 392.1 (N abv 5000') 120.825 379.3 (N blw 5000') 124.15 338.35 (S abv 5000') 119.775 317.45 (S blw 5000')	TOWER ★ 133.95 263.15	GND CON 121.9 259.3	CLNC DEL 118.05 348.7	ASR/PAR
------------------------	--	--	--------------------------------------	--	---------



SE-3, 13 JUN 2024 to 11 JUL 2024

SE-3, 13 JUN 2024 to 11 JUL 2024

EMERG SAFE ALT 100 NM 3300



ELEV 17	TDZE 14
HIRL all Rwys Rwy 32L Idg 9135'	
Recommend Rwy 14L-32R for apch end engagement of A-Gear. FAF to MAP 5.3 NM	
Knots	60 90 120 150 180
Min:Sec	5:18 3:32 2:39 2:07 1:46

PANAMA CITY, FLORIDA
Amdt 4 20MAY21

30°04'N-85°34'W

TYNDALL AFB (KPAM)

ILS or LOC Z RWY 14L