

ILS or LOC Z RWY 32R

LOC I-PAM 110.1	APCH CRS 319°	Rwy Idg 10,008 TDZE 14 Arpt Elev 17
---------------------------	-------------------------	--

[USAF]

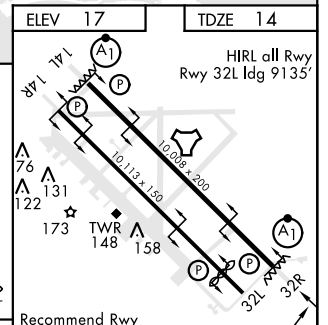
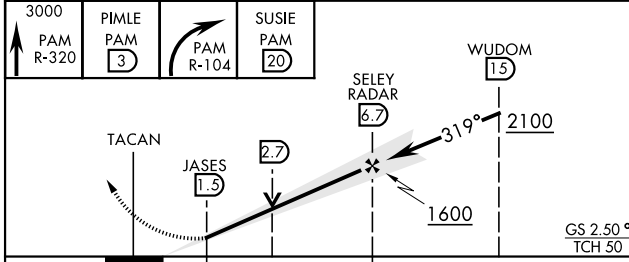
TYNDALL AFB (KPAM)

DME or RADAR required	ALSF-1 	MISSED APPROACH: Track outbound PAM R-320 to 3 DME (PIMLE), then turn right to join PAM R-104 to 20 DME (SUSIE) and hold. Maintain 3000.
-----------------------	------------	--

ATIS ★ 254.4	APP CON 125.2 392.1 (N abv 5000') 120.825 379.3 (N blw 5000') 124.15 338.35 (S abv 5000') 119.775 317.45 (S blw 5000')	TOWER ★ 133.95 263.15	GND CON 121.9 259.3	CLNC DEL 118.05 348.7	ASR/PAR
------------------------	--	---------------------------------	-------------------------------	---------------------------------	---------



EMERG SAFE ALT 100 NM 3300	ELEV 17	TDZE 14
----------------------------	---------	---------



CATEGORY	A	B	C	D	E
S-ILS 32R*	214/24		200	(200-1/2)	
S-LOC 32R**	540/24	526 (600-1/2)	540/55		526 (600-1)
CIRCLING	540-1	523 (600-1)	540-1 1/2	580-2	620-2 1/4
			523 (600-1 1/2)	563 (600-2)	603 (700-2 1/4)

Recommend Rwy 14L-32R for apch end engagement of A-Gear.					
FAF to MAP 5.3 NM					
Knots	60	90	120	150	180
Min:Sec	5:18	3:32	2:39	2:07	1:46

ILS or LOC Z RWY 32R

SE-3, 13 JUN 2024 to 11 JUL 2024

SE-3, 13 JUN 2024 to 11 JUL 2024