

PANAMA CITY, FLORIDA

TACAN Z RWY 14L

TACAN PAM Chan 64	APCH CRS 130°	Rwy ldg 10,008 TDZE 14 Arpt Elev 17
-----------------------------	-------------------------	--

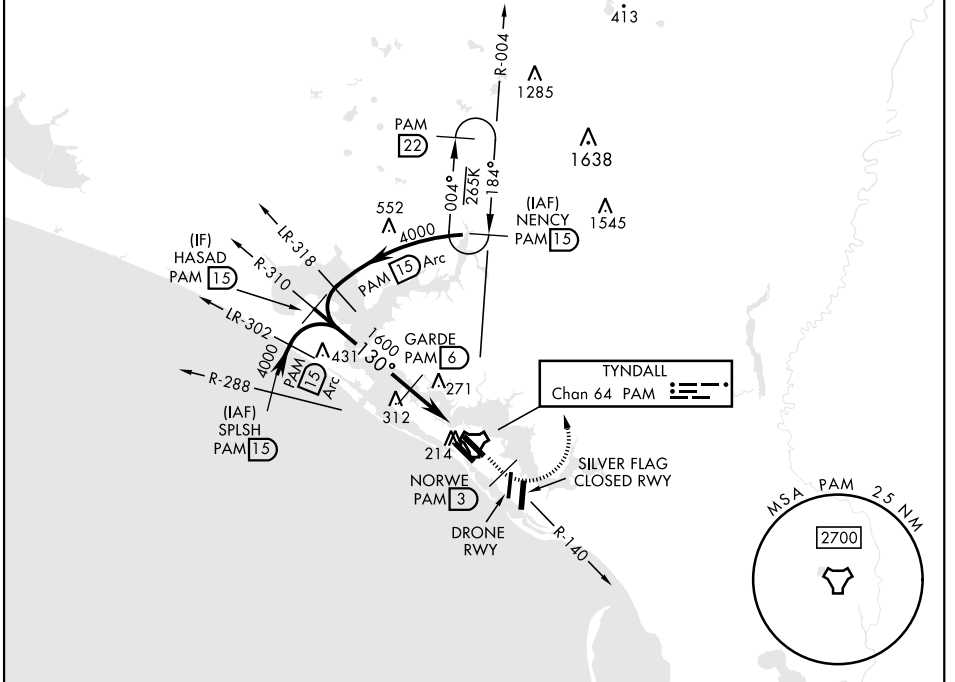
[USAF]

TYNDALL AFB (KPAM)

▼ * When ALS inop, increase CAT AB RVR to 55 and vis to 1 mile, CAT CDE vis to 1½ miles.

ALSF-1 MISSED APPROACH: Track outbound PAM TACAN R-140 to 3 DME (NORWE), then turn left to join PAM R-004 to 15 DME (NENCY) and hold. Maintain 3000.

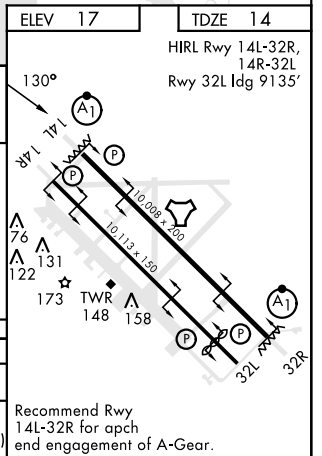
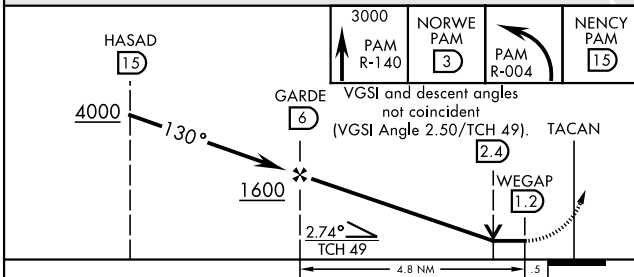
ATIS ★ 254.4	APP CON 125.2 392.1 (N abv 5000') 120.825 379.3 (N blw 5000') 124.15 338.35 (S abv 5000') 119.775 317.45 (S blw 5000')	TOWER ★ 133.95 263.15	GND CON 121.9 259.3	CLNC DEL 118.05 348.7	ASR/PAR
------------------------	--	---------------------------------	-------------------------------	---------------------------------	---------



SE-3, 13 JUN 2024 to 11 JUL 2024

SE-3, 13 JUN 2024 to 11 JUL 2024

EMERG SAFE ALT 100 NM 3300



CATEGORY	A	B	C	D	E
S-14L*	500/24 486 (500-½)		500/50 486 (500-1)		
CIRCLING	540-1 523 (600-1)		540-1½ 523 (600-1½)	580-2 563 (600-2)	620-2¼ 603 (700-2¼)

Recommend Rwy 14L-32R for apch and engagement of A-Gear.

PANAMA CITY, FLORIDA
Amdt 3 12AUG21

30°04'N-85°34'W

TYNDALL AFB (KPAM)

TACAN Z RWY 14L