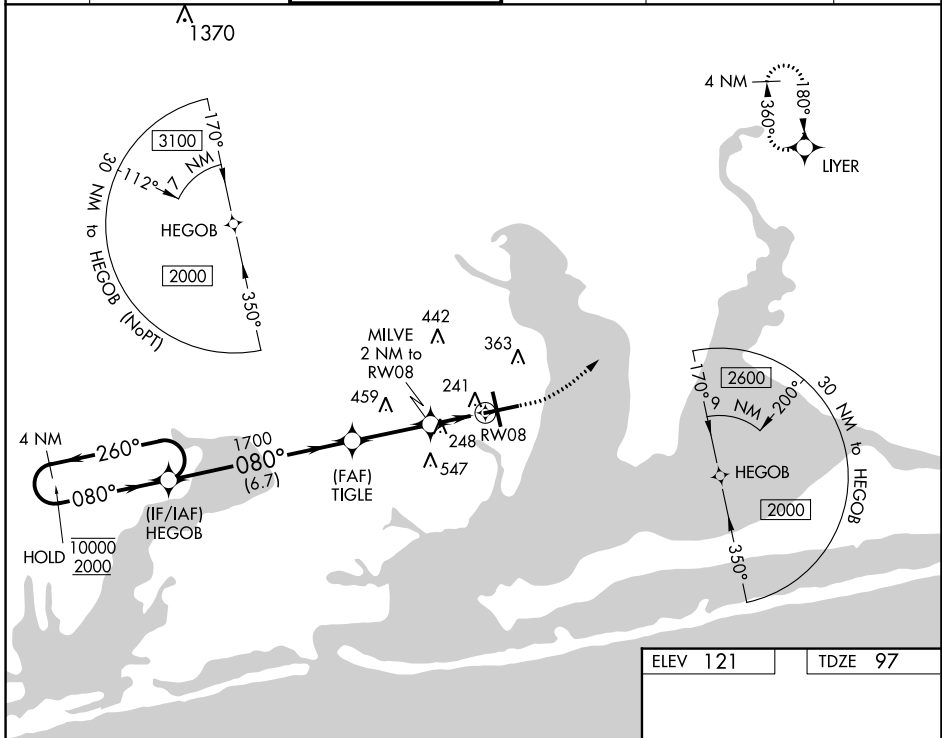


WAAS CH <b>86219</b> <b>W08A</b>	APP CRS <b>080°</b>	Rwy Idg <b>7000</b> TDZE <b>97</b> Apt Elev <b>121</b>
--	------------------------	--

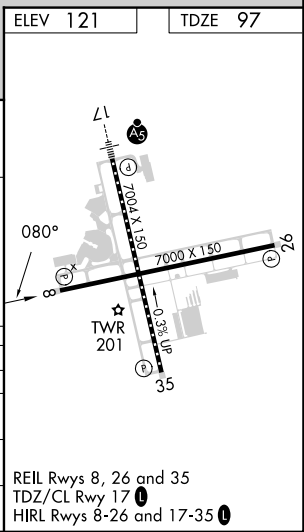
# RNAV (GPS) RWY 8

PENSACOLA INTL (PNS)

RNP APCH.		MISSED APPROACH: Climb to 600 then climbing left turn to 2200 direct LIYER and hold.			
<p>▼ Rwy 8 helicopter visibility reduction below 3/4 SM NA. For uncompensated Baro-VNAV systems, LNAV/VNAV NA below 1°C or above 54°C.                  ▲ CAUTION: Intensive VFR student training in vicinity of airport.</p>					
ATIS <b>121.25</b>	PENSACOLA APP CON <b>119.0 269.375</b>	PENSACOLA TOWER ★ <b>119.9 (CTAF) 0 257.8</b>	GND CON <b>121.9 348.6</b>	CLNC DEL <b>123.725 256.875</b>	UNICOM <b>122.95</b>



4 NM Holding Pattern HEGOB		600		2200		LIYER	
<p>10000 ← 260° 2000 → 080°</p> <p>GP 3.00° TCH 55</p>		<p>TIGLE 1700</p> <p>* 780</p>		<p>MILVE 2 NM to RWY 8</p> <p>* 1.3 NM to RWY 8</p>		<p>* LNAV only.</p>	
		6.7 NM		2.9 NM		0.7 NM	
						1.3 NM	
CATEGORY	A	B	C	D			
LPV DA	347-1		250 (300-1)				
LNAV/VNAV DA	402-1		305 (300-1)				
LNAV MDA	560-1 463 (500-1)		560-1 3/8 463 (500-1 3/8)				
CIRCLING	580-1 459 (500-1)		680-1 559 (600-1)		860-2 739 (800-2)		860-2 1/4 739 (800-2 1/4)



SE-3, 13 JUN 2024 to 11 JUL 2024

SE-3, 13 JUN 2024 to 11 JUL 2024