

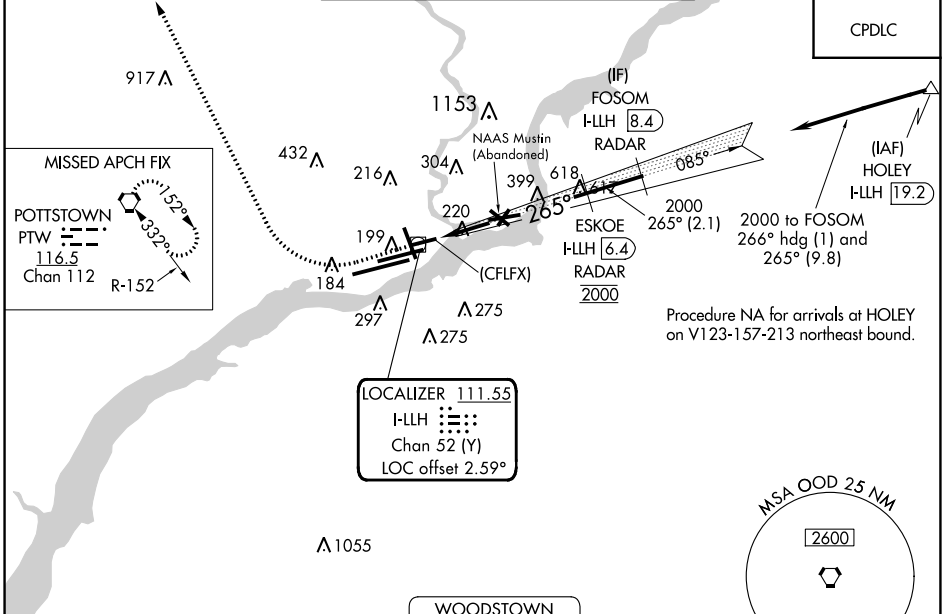
LOC/DME I-LLH 111.55 Chan 52 (Y)	APP CRS 265°	Rwy Idg TDZE Apt Elev	5001 36 36
---	------------------------	-----------------------------	---------------------------------------

ILS or LOC RWY 26

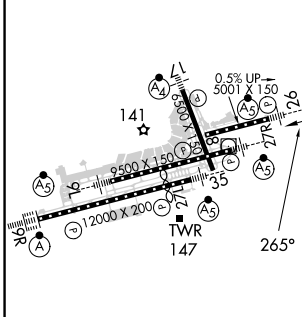
PHILADELPHIA INTL (PHL)

DME or RADAR required.		MALSR	MISSED APPROACH: Climb to 800 then climbing right turn to 3000 direct PTW VORTAC and hold.
<p>▼ For inop ALS, increase S-ILS all Cats visibility to RVR 4500 and S-LOC Cats A and B visibility to RVR 5500 and Cat C to 1 1/8 SM. ▲ Rwy 26 helicopter visibility reduction below RVR 4000 NA.</p>			

D-ATIS ARR 133.4 DEP 135.925	PHILADELPHIA APP CON 124.35 319.15	PHILADELPHIA TOWER 118.5 327.05 (Rwys 9L/27R, 8/26 and 17/35) 135.1 327.05 (Rwy 9R/27L)	GND CON 121.9 348.6	CLNC DEL 118.85 348.6
--	--	---	-------------------------------	---------------------------------



ELEV 36	D	TDZE 36
---------	----------	---------



TDZ/CL Rwy 9R HIRL all Rwys REIL Rwys 9L and 35	FAF to MAP 5.7 NM
Knots	60 90 120 150 180
Min:Sec	5:42 3:48 2:51 2:17 1:54

800	3000	PTW
*LOC only.		
(CFLFX) I-LLH 0.6	*I-LLH 2.5	ESKOE I-LLH 6.4 RADAR
2000	2000	FOSOM I-LLH 8.4 RADAR
1.8 NM	3.9 NM	2.1 NM
GS 3.15° TCH 50		

CATEGORY	A	B	C	D
S-ILS 26	299/40 263 (300-3/4)			NA
S-LOC 26	700/40	664 (700-3/4)	700-1 1/2 664 (700-1 1/2)	NA
C CIRCLING	700-1	664 (700-1)	700-1 7/8 664 (700-1 7/8)	NA

NE-4, 13 JUN 2024 to 11 JUL 2024

NE-4, 13 JUN 2024 to 11 JUL 2024