

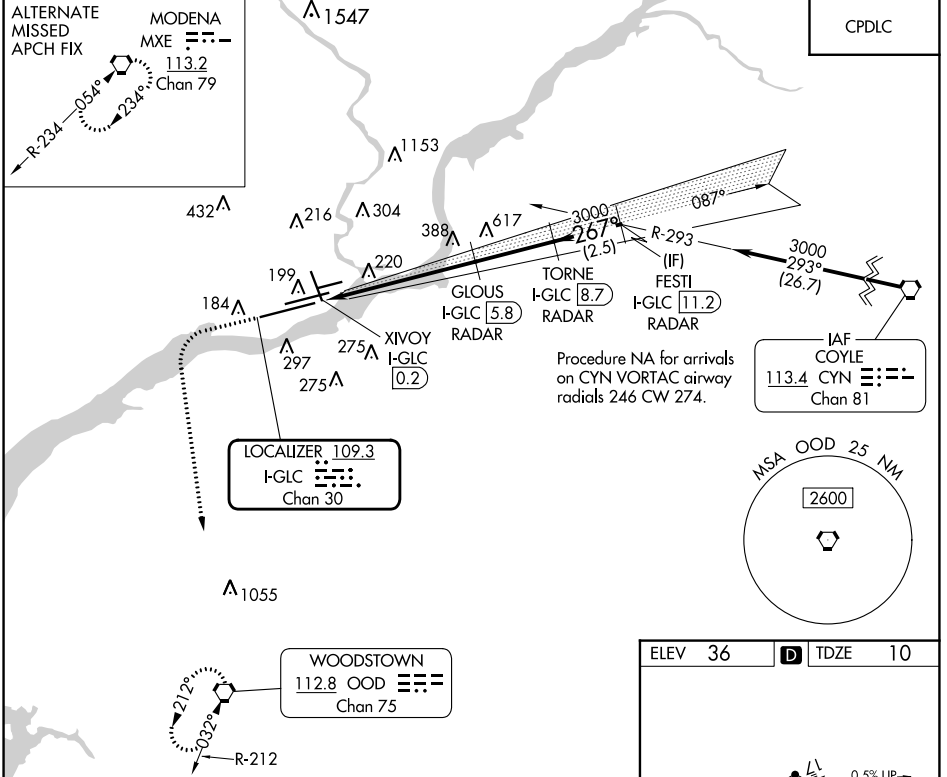
LOC/DME I-GLC 109.3 Chan 30	APP CRS 267°	Rwy Idg TDZE Apt Elev 9912 10 36
--	------------------------	--

ILS or LOC RWY 27L

PHILADELPHIA INTL (PHL)

DME or RADAR required. * RVR 1800 authorized with use of FD or AP or HUD to DA.	MALSR	MISSED APPROACH: Climb to 1500 then climbing left turn to 3000 direct OOD VORTAC and hold.
--	-------	--

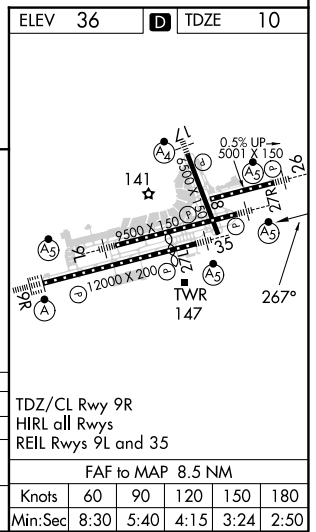
D-ATIS ARR 133.4 DEP 135.925	PHILADELPHIA APP CON 124.35 319.15	PHILADELPHIA TOWER 118.5 327.05 (Rwys 9L/27R, 8/26 and 17/35) 135.1 327.05 (Rwy 9R/27L)	GND CON 121.9 348.6	CLNC DEL 118.85 348.6
--	--	---	-------------------------------	---------------------------------



NE-4, 13 JUN 2024 to 11 JUL 2024

NE-4, 13 JUN 2024 to 11 JUL 2024

1500	3000	OOD	VGSI and ILS glidepath not coincident (VGSI Angle 3.00/TCH 73).	TORNE I-GLC 8.7 RADAR	FESTI I-GLC 11.2 RADAR
I-GLC DME ANTENNA	XIVOY I-GLC 0.2	I-GLC 1	GLOUS I-GLC 5.8 RADAR	3000	3000
GS 3.00° TCH 57			2060	267°	3000
0.7	0.8	4.8 NM	2.9 NM	2.5 NM	



CATEGORY	A	B	C	D
S-ILS 27L*	210/24 200 (200-1/2)			
S-LOC 27L	560/24 550 (600-1/2)	560/60 550 (600-1 1/4)		
CIRCLING	560-1 524 (600-1)	600-1 564 (600-1)	620-1 584 (600-1%)	720-2 684 (700-2 1/4)
TDZ/CL Rwy 9R	HIRL all Rwys			
	REIL Rwys 9L and 35			
	FAF to MAP 8.5 NM			
Knots	60	90	120	150 180
Min:Sec	8:30	5:40	4:15	3:24 2:50