

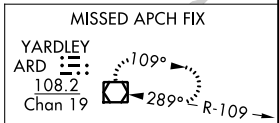
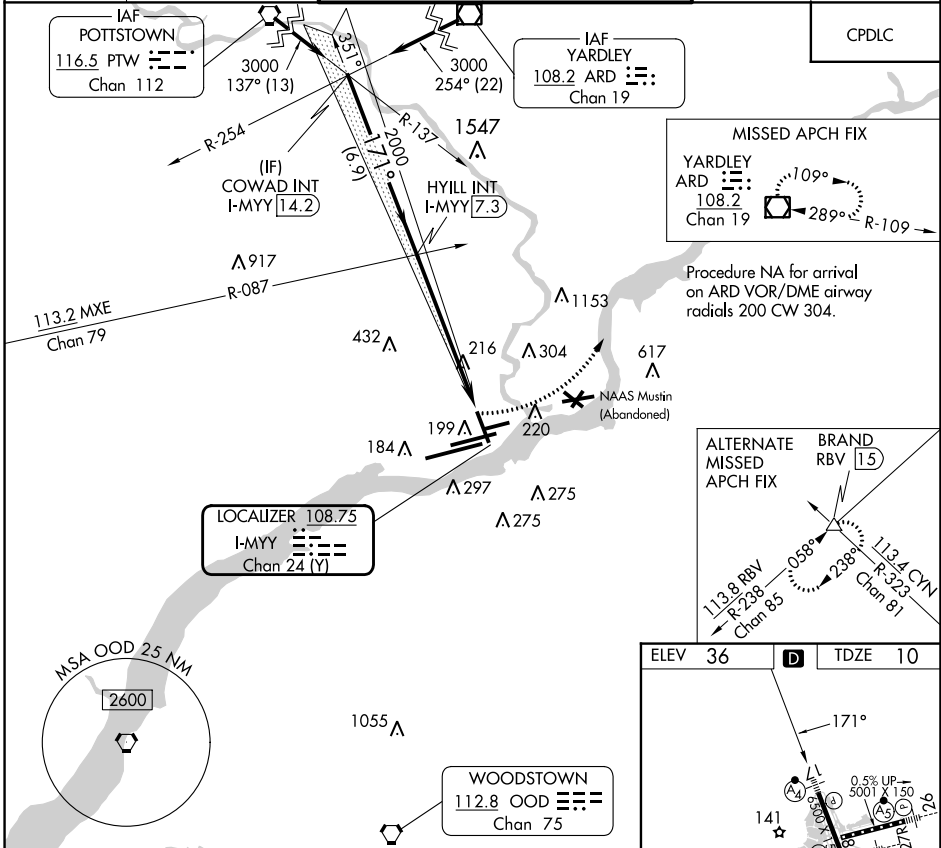
LOC/DME I-MYY 108.75 Chan 24 (Y)	APP CRS 171°	Rwy Idg 6500 TDZE 10 Apt Elev 36
--	------------------------	---

ILS V RWY 17 (CONVERGING)

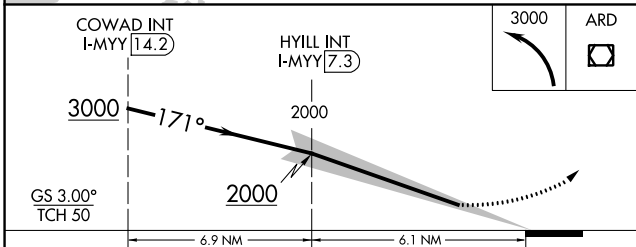
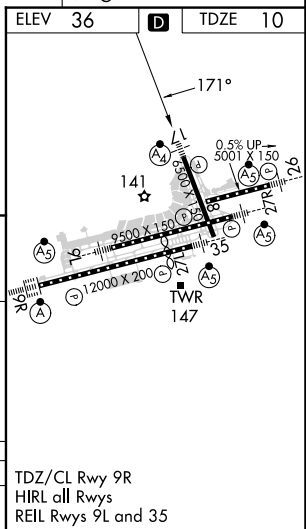
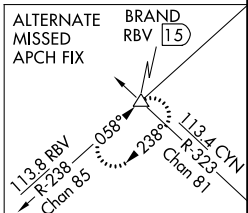
PHILADELPHIA INTL (PHL)

RADAR required.		MALSF	MISSED APPROACH: Climbing left turn to 3000 direct ARD VOR/DME and hold.
Simultaneous approach authorized. Rwy 17 helicopter visibility reduction below 3/4 SM NA.			

D-ATIS ARR 133.4 DEP 135.925	PHILADELPHIA APP CON 124.35 319.15	PHILADELPHIA TOWER 118.5 327.05 (Rwys 9L/27R, 8/26 and 17/35) 135.1 327.05 (Rwy 9R/27L)	GND CON 121.9 348.6	CLNC DEL 118.85 348.6
--	--	---	-------------------------------	---------------------------------



Procedure NA for arrival on ARD VOR/DME airway radials 200 CW 304.



CATEGORY	A	B	C	D
S-ILS 17		410/45	400 (400-3/4)	

NE-4, 13 JUN 2024 to 11 JUL 2024

NE-4, 13 JUN 2024 to 11 JUL 2024