


APP CRS	Rwy Idg	9500
087°	TDZE	13
	Apt Elev	36

RNAV (RNP) Z RWY 9L

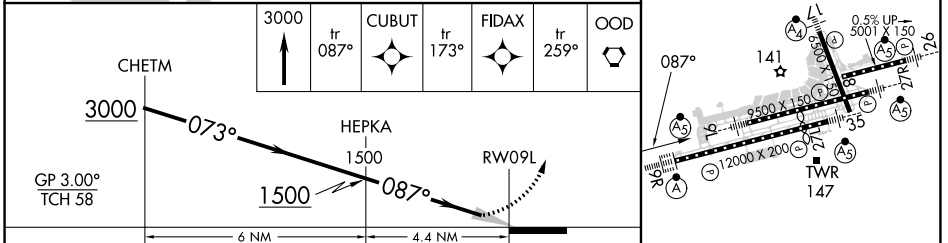
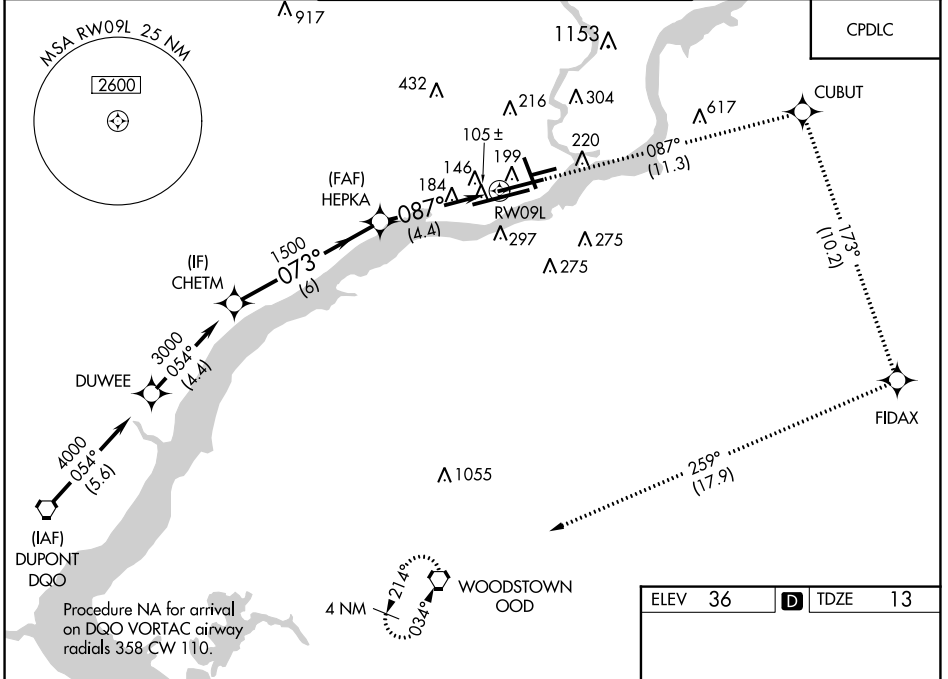
PHILADELPHIA INTL (PHL)

▼ For uncompensated Baro-VNAV systems, procedure NA below -12°C (10°F) or above 54°C (130°F). GPS required.
 For inop ALS, increase RNP 0.11 visibility all Cats to RVR 6000 and RNP 0.30 visibility all Cats to 1½ SM.

MALSR


MISSED APPROACH: Climb to 3000 on track 087° to CUBUT and on track 173° to FIDAX and on track 259° to OOD VORTAC and hold.

D-ATIS	PHILADELPHIA APP CON	PHILADELPHIA TOWER	GND CON	CLNC DEL
ARR 133.4	124.35 319.15	118.5 327.05 (Rwys 9L/27R, 8/26 and 17/35) 135.1 327.05 (Rwy 9R/27L)	121.9 348.6	118.85 348.6
DEP 135.925				



CATEGORY	A	B	C	D
RNP 0.11 DA		382/35	369 (400-%)	
RNP 0.30 DA		434/45	421 (400-%)	

AUTHORIZATION REQUIRED

TDZ/CL Rwy 9R
 HIRL all Rwys
 REIL Rwys 9L and 35

NE-4, 13 JUN 2024 to 11 JUL 2024

NE-4, 13 JUN 2024 to 11 JUL 2024