

# ARLIN FOUR ARRIVAL

AL-322 (FAA)

PHOENIX, ARIZONA

SW-4, 13 JUN 2024 to 11 JUL 2024

### ARRIVAL ROUTE DESCRIPTION

**BLYTE TRANSITION** (BLH,ARLIN4): From over BLH VORTAC on BLH R-089 and IWA R-256 to ARLIN INT. Thence. . . .

**MOHAK TRANSITION** (MOHAK,ARLIN4): From over MOHAK INT on GBN R-247 and BXK R-215 to HYDRR INT, then on IWA R-256 to ARLIN INT. Thence. . . .

**PHOENIX SKY HARBOR INTL:** Rwy 7L/R or 8: From over ARLIN, Expect vectors to final approach course; Rwy 25L/R or 26: From over ARLIN, on IWA R-256 to TUKEE. Expect vectors to final approach course prior to TUKEE.

**SATELLITE AIRPORTS:** Expect vectors after passing SCOLE or JUDTH.

**LOST COMMUNICATIONS:** After ARLIN, on IWA R-256 and PXR R-143 to PXR VORTAC.

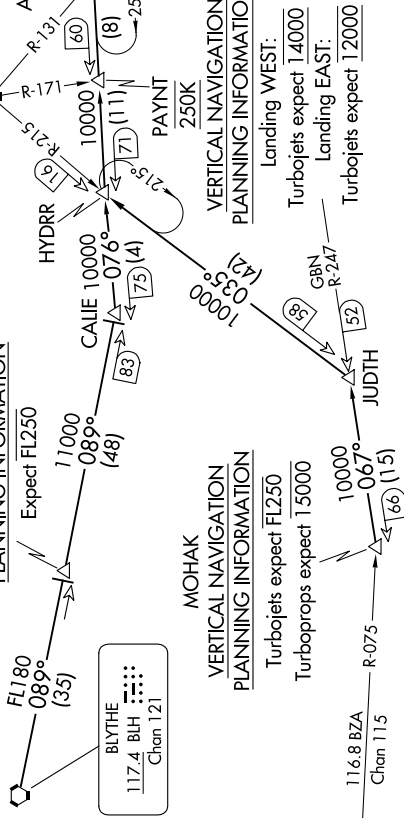
**NOTE: BLYTHE** Transition for turboprop aircraft FL240 and above.  
Turboprop aircraft plan **BLYTHE ARRIVAL** at or below FL230.

**NOTE: MOHAK** Transition for turboprop and turboprop aircraft.

**NOTE: TURBOPROPS** landing KPHX expect vectors after passing SCOLE or JUDTH.

### SCALE

#### VERTICAL NAVIGATION PLANNING INFORMATION



- PHOENIX APP CON 124.1 256.9
- PHOENIX TOWER 118.7 278.8 (Rwy 8-26)
- PHOENIX GND CON 120.9 254.3 (Rwy 7L-23R, 7R-25L)
- 119.75 269.2
- CHD ATIS 128.325
- FFZ ATIS 118.25
- DVT ATIS 126.5
- IWA ATIS 133.5 270.275
- PHX D-ATIS 127.575
- SDL ATIS 118.6
- PHOENIX-DEER VALLEY
- SCOTTSDALE
- PHOENIX 115.6 PXR Chan 103
- PHOENIX-SKY HARBOR INTL
- FALCON FLD
- PHOENIX-MESA GATEWAY
- CHANDLER MUNI
- TUKEE
- WILLE 113.3 IWA Chan 80
- GILA BEND 116.6 GBN Chan 113

NOTE: RADAR required  
NOTE: DME required  
NOTE: Chart not to scale.

# ARLIN FOUR ARRIVAL

PHOENIX, ARIZONA

SW-4, 13 JUN 2024 to 11 JUL 2024