

# BALDY THREE DEPARTURE

AL-322 (FAA)

PHOENIX SKY HARBOR INTL (PHX)

PHOENIX, ARIZONA

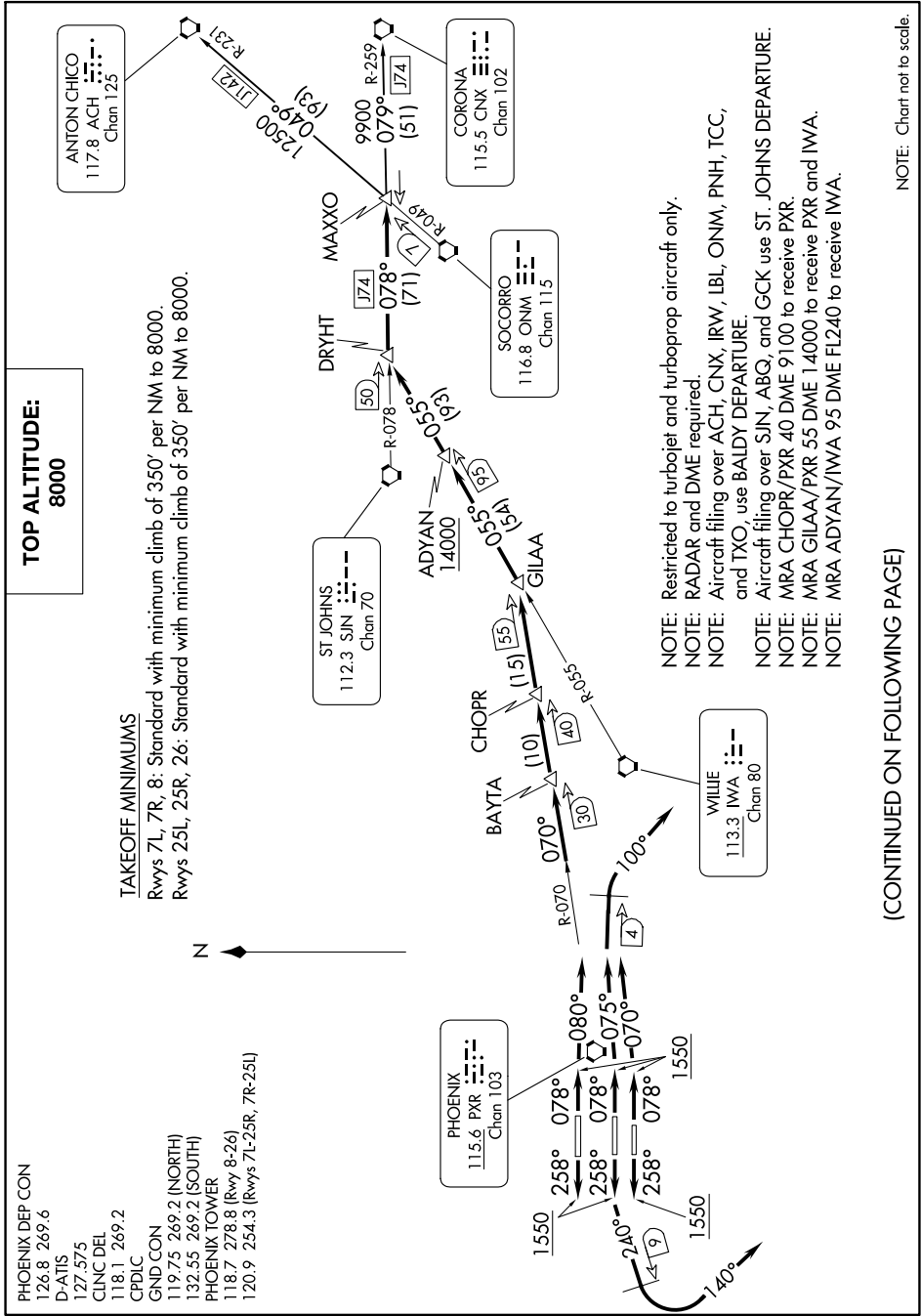
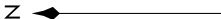
SW-4, 13 JUN 2024 to 11 JUL 2024

- PHOENIX DEP CON  
 126.8 269.6  
 D-ATIS  
 127.575  
 CLNCDEL  
 118.1 269.2  
 CPDLC  
 GND CON  
 119.75 269.2 (NORTH)  
 132.55 269.2 (SOUTH)  
 PHOENIX TOWER  
 118.7 278.8 (Rwy 8-26)  
 120.9 254.3 (Rwys 7L-25R, 7R-25L)

**TOP ALTITUDE:  
8000**

### TAKEOFF MINIMUMS

Rwys 7L, 7R, 8: Standard with minimum climb of 350' per NM to 8000.  
Rwys 25L, 25R, 26: Standard with minimum climb of 350' per NM to 8000.



- NOTE: Restricted to turbojet and turboprop aircraft only.
- NOTE: RADAR and DME required.
- NOTE: Aircraft filing over ACH, CNX, IRW, LBL, ONM, PNH, TCC, and TXO, use BALDY DEPARTURE.
- NOTE: Aircraft filing over SJN, ABG, and GCK use ST. JOHNS DEPARTURE.
- NOTE: MRA CHOPR/PXR 40 DME 9100 to receive PXR.
- NOTE: MRA GILAA/PXR 55 DME 14000 to receive PXR and IWA.
- NOTE: MRA ADYAN/IWA 95 DME FL240 to receive IWA.

(CONTINUED ON FOLLOWING PAGE)

NOTE: Chart not to scale.

SW-4, 13 JUN 2024 to 11 JUL 2024

# BALDY THREE DEPARTURE