

BLYTHE FIVE ARRIVAL

AL-322 (FAA)

PHOENIX, ARIZONA

SW-4, 13 JUN 2024 to 11 JUL 2024

ARRIVAL ROUTE DESCRIPTION

BLYTHE TRANSITION (BLH.BLH5): From over BLH VORTAC on BLH R-082 to SALOM, then on GBN R-285 and IWA R-256 to ARLIN. Thence

PHOENIX SKY HARBOR INTL: Rwys 7L/R or 8: From over ARLIN, expect vectors to final approach course; Rwys 25L/R or 26: From over ARLIN, on IWA R-256 to TUKEE. Expect vectors to final approach course prior to TUKEE.

SATELLITE AIRPORTS: Expect vectors after passing SALOM.

LOST COMMUNICATIONS: After ARLIN, on IWA R-256 and PXR R-143 to PXR VORTAC.

SALOM

VERTICAL NAVIGATION PLANNING INFORMATION
Turbojet expect 17000
Turbojet landing KPHX expect vectors after SALOM.

BLYTHE
117.4 BLH
Chan 121

BUCKEYE
110.6 BKK
Chan 43

PHOENIX
115.6 PXR
Chan 103

FALCON
FLD

PHOENIX APP CON
124.1 256.9
PHOENIX TOWER
118.7 278.8 (Rwy 8-26)
PHOENIX GND CON
119.75 269.2

CHD ATIS
128.325
FFZ ATIS
118.25
DVT ATIS
126.5
IWA ATIS
133.5 270.275
PHX D-ATIS
127.575
SDL ATIS
118.6

PHOENIX-MESA GATEWAY
WILLIE
113.3 IWA
Chan 80

PHOENIX-SKY HARBOR INTL
STELLAR AIRPARK
AMBRRR
ARLIN
TUKEE
CHANDLER MUNI

SCOTTSDALE
PHOENIX-DEER VALLEY
GILA BEND
116.6 GBN
Chan 113

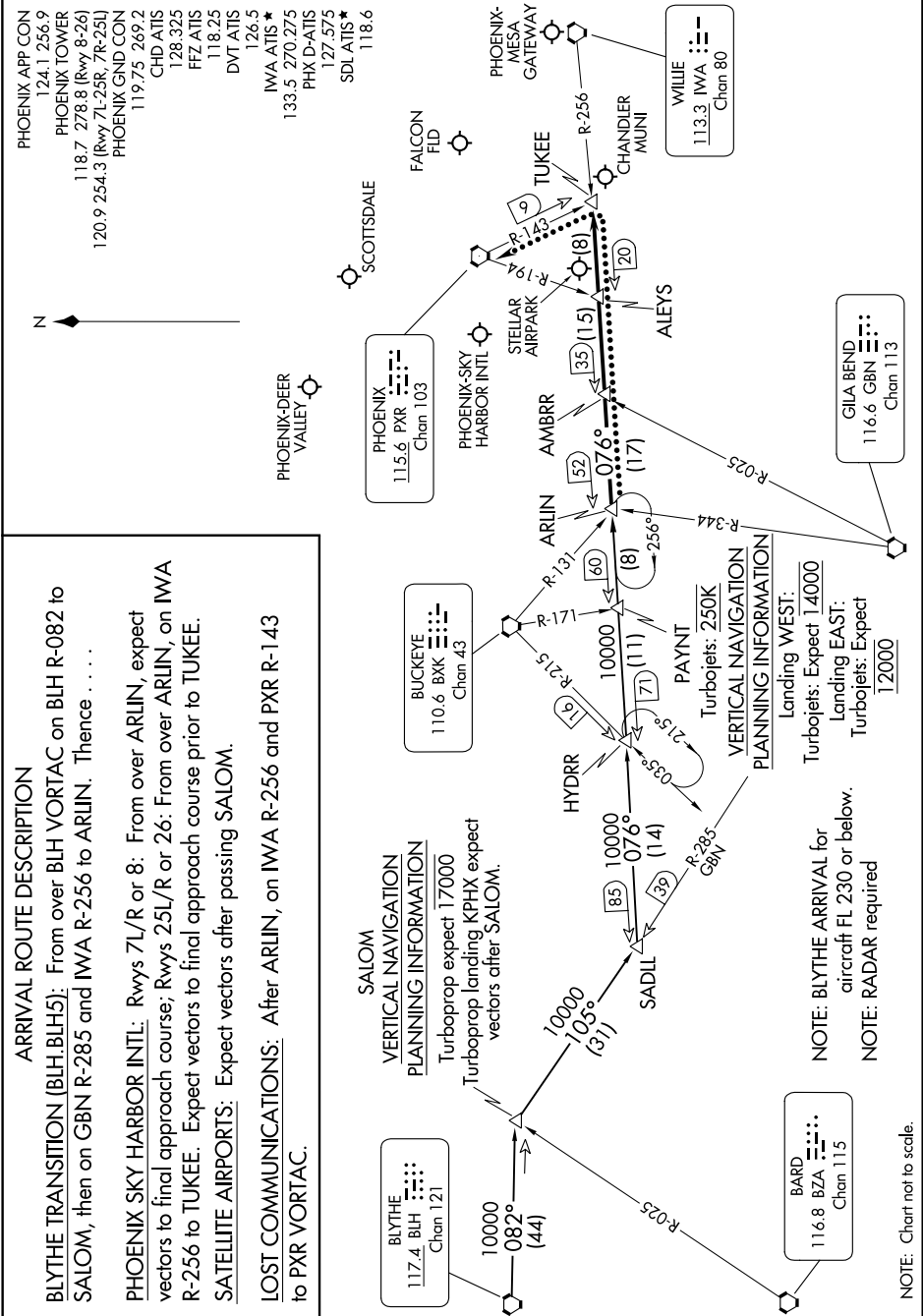
BARD
116.8 BZA
Chan 115

HYDRR
SADLL
PAYNAT
ARLINSKY
ALEYS
PHOENIX-DEER VALLEY

VERTICAL NAVIGATION PLANNING INFORMATION
Landing WEST:
Turbojets: Expect 14000
Landing EAST:
Turbojets: Expect 12000

NOTE: BLYTHE ARRIVAL for aircraft FL 230 or below.
NOTE: RADAR required

NOTE: Chart not to scale.



SW-4, 13 JUN 2024 to 11 JUL 2024

BLYTHE FIVE ARRIVAL

PHOENIX, ARIZONA