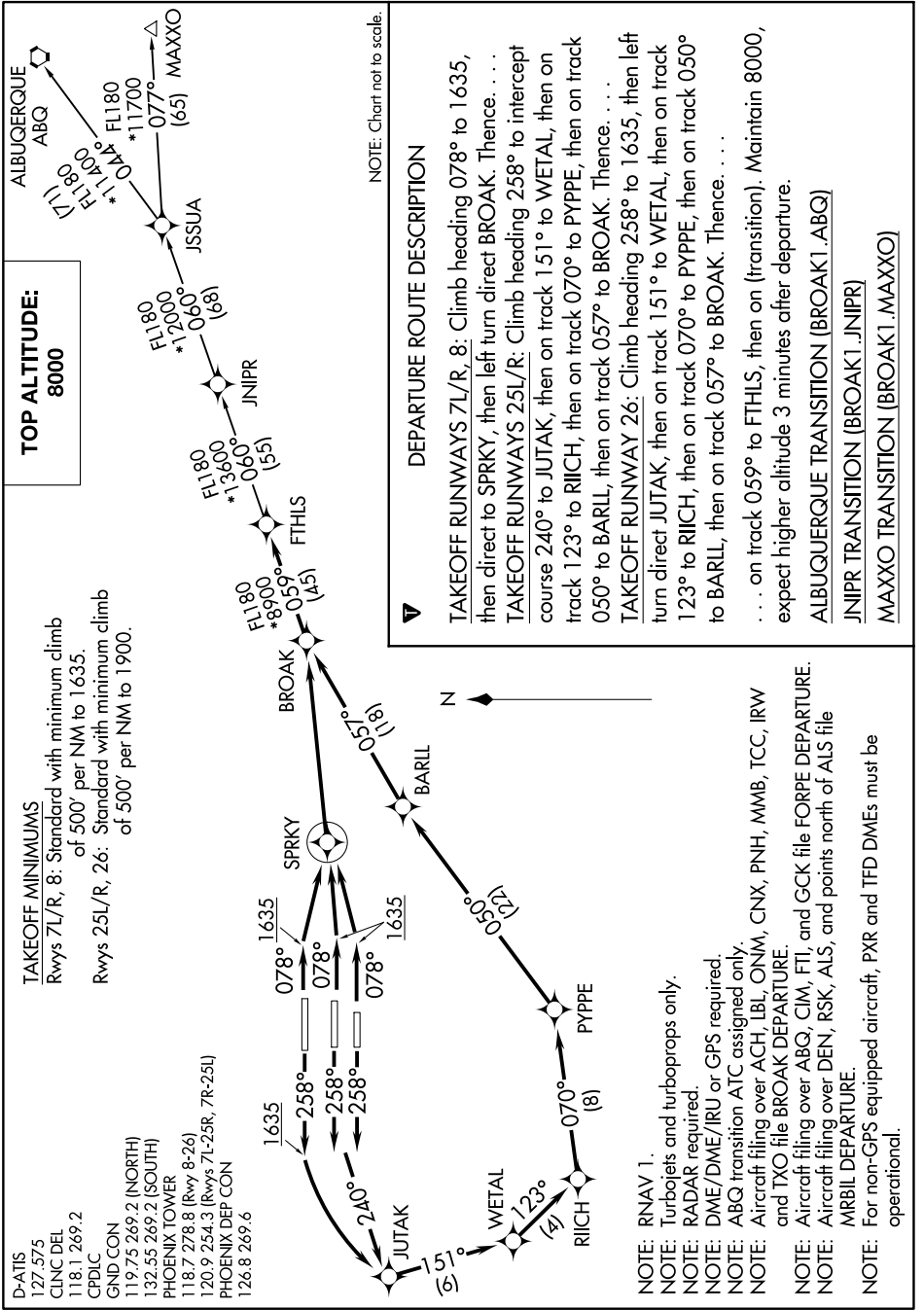


SW-4, 13 JUN 2024 to 11 JUL 2024



TAKEOFF MINIMUMS
 Rwy 8: Standard with minimum climb of 500' per NM to 1635.
 Rwy 26: Standard with minimum climb of 500' per NM to 1900.

D-ATIS 127.575
 CLNC DEL 118.1269.2
 CPDLC
 GND CON 119.75269.2 (NORTH)
 132.55269.2 (SOUTH)
 PHOENIX TOWER 118.7278.8 (Rwy 8-26)
 120.9254.3 (Rwys 7L-25R, 7R-25L)
 PHOENIX DEP CON 126.8269.6

NOTE: Chart not to scale.

DEPARTURE ROUTE DESCRIPTION

TAKEOFF RUNWAYS 7L/R, 8: Climb heading 078° to 1635, then direct to SPRKY, then left turn direct BROAK. Thence. . . .
 TAKEOFF RUNWAYS 25L/R: Climb heading 258° to intercept course 240° to JUTAK, then on track 151° to WETAL, then on track 123° to RIICH, then on track 070° to PYPPE, then on track 050° to BARLL, then on track 057° to BROAK. Thence. . . .
 TAKEOFF RUNWAY 26: Climb heading 258° to 1635, then left turn direct JUTAK, then on track 151° to WETAL, then on track 123° to RIICH, then on track 070° to PYPPE, then on track 050° to BARLL, then on track 057° to BROAK. Thence. . . .
 . . . on track 059° to FTHLS, then on (transition). Maintain 8000, expect higher altitude 3 minutes after departure.
 ALBUJERQUE TRANSITION (BROAK1.ABQ)
 JNIPR TRANSITION (BROAK1.JNIPR)
 MAXXO TRANSITION (BROAK1.MAXXO)

SW-4, 13 JUN 2024 to 11 JUL 2024