

BUCKEYE FOUR DEPARTURE

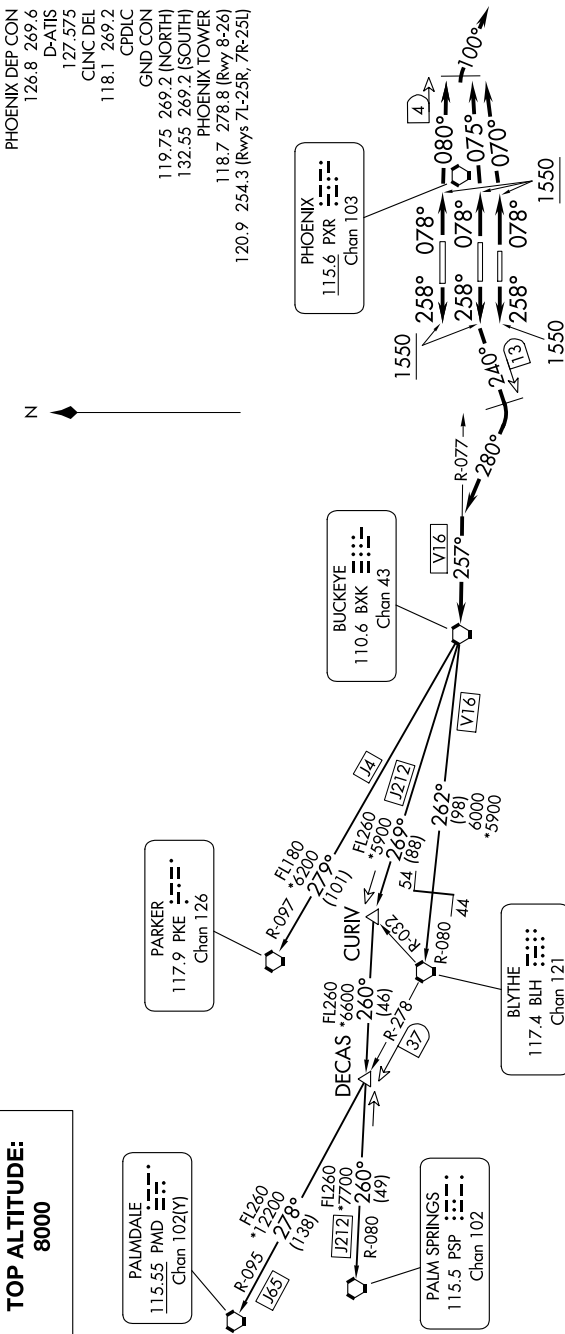
AL-322 (FAA)

PHOENIX SKY HARBOR INTL (PHX)
PHOENIX, ARIZONA

SW-4, 13 JUN 2024 to 11 JUL 2024

TOP ALTITUDE:
8000

PHOENIX DEP CON
126.8 269.6
D-ATIS
127.575
CLNC DEL
118.1 269.2
CPDIC
GND CON
119.75 269.2 (NORTH)
132.55 269.2 (SOUTH)
PHOENIX TOWER
118.7 278.8 (Rwy 8-26)
120.9 254.3 (Rwys 7L-25R, 7R-25L)



TAKEOFF MINIMUMS

Rwys 7L/7R/8: Standard with minimum climb of 300' per NM to 8000.
Rwys 25L/25R/26: Standard with minimum climb of 350' per NM to 8000.

NOTE: Restricted to turbojet and turboprop aircraft only.

NOTE: RADAR and DME required.

NOTE: Aircraft requesting FL 220 and below must file BLYTHE Transition.

NOTE: Turbojets landing LAX, file PARKER Transition.

NOTE: Aircraft landing other than LAX and turboprops landing at LAX:
Requesting FL240 and above, file PALMDALE or PALM SPRINGS Transition.

NOTE: Chart not to scale.

(CONTINUED ON FOLLOWING PAGE)

SW-4, 13 JUN 2024 to 11 JUL 2024

BUCKEYE FOUR DEPARTURE

PHOENIX, ARIZONA
PHOENIX SKY HARBOR INTL (PHX)