


LOC/DME I-AHA <b>110.75</b> Chan <b>44</b> (Y)	APP CRS <b>078°</b>	Rwy Idg <b>7800</b> TDZE <b>1116</b> Apt Elev <b>1135</b>
------------------------------------------------------	------------------------	-----------------------------------------------------------------

# ILS or LOC RWY 7R

PHOENIX SKY HARBOR INTL (PHX)

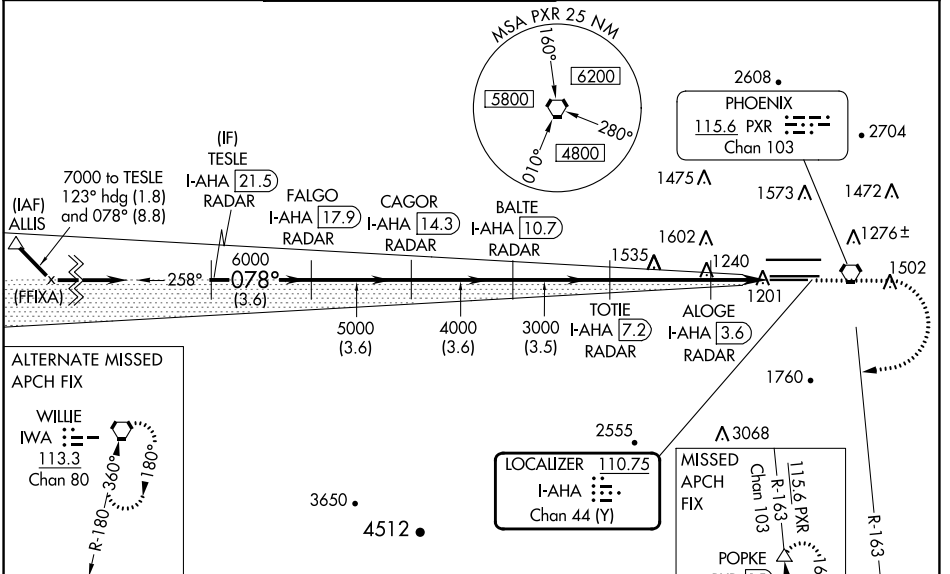
**DME required.**

**⚠** Inop table does not apply to S-ILS 7R. Simultaneous approach authorized with ILS or LOC Rwy 8 and RNAV (GPS) Y Rwy 8. Rwy 7R helicopter visibility reduction below 3/4 SM NA. LOC procedure NA during simultaneous operations. For inop ALS, increase S-LOC 7R visibility Cats A/B to 1 SM and Ops C/D to 1 1/2 SM.

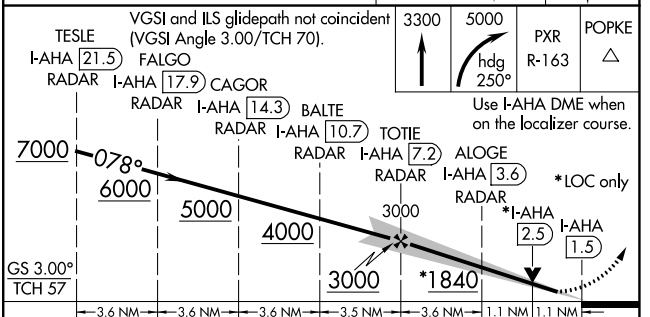
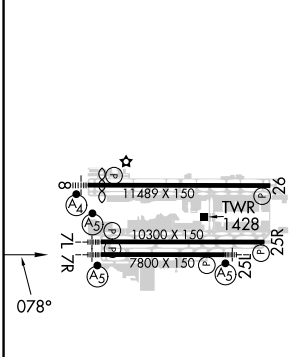
**MALSR** 

**MISSED APPROACH:** Climb to 3300 then climbing right turn to 5000 on heading 250° and PXR VORTAC R-163 to POPKE/PXR 15 DME and hold.

D-ATIS <b>127.575</b>	PHOENIX APP CON <b>128.65 353.9</b>	PHOENIX TOWER <b>118.7 278.8</b> (Rwy 8-26) <b>120.9 254.3</b> (Rwy 7L-25R, 7R-25L)	GND CON <b>119.75 269.2</b> (N) <b>132.55 269.2</b> (S)	CLNC DEL <b>118.1 269.2</b>	CPDLC
--------------------------	----------------------------------------	-------------------------------------------------------------------------------------------	---------------------------------------------------------------	--------------------------------	-------



ELEV 1135	<b>D</b>	TDZE 1116
-----------	----------	-----------



HIRL Rwys 8-26, 7L-25R and 7R-25L REIL Rwy 26	FAF to MAP 5.8 NM	CATEGORY	A	B	C	D
		S-ILS 7R		1369-3/4 253 (300-3/4)		
		S-LOC 7R		1520-3/4 404 (400-3/4)		
Knots Min:Sec	60 90 120 150 180 5:48 3:52 2:54 2:19 1:56	<b>C</b> CIRCLING	1740-1	605 (700-1)	2040-2 3/4 905 (1000-2 3/4)	2560-3 1425 (1500-3)

SW-4, 13 JUN 2024 to 11 JUL 2024

SW-4, 13 JUN 2024 to 11 JUL 2024