

ILS or LOC Z RWY 30

LOC I-BRN 111.7	APCH CRS 302°	Rwy Ldg 13,510 TDZE 2996 Arprt Elev 2996
---------------------------	-------------------------	---

AL-323 [USAF]

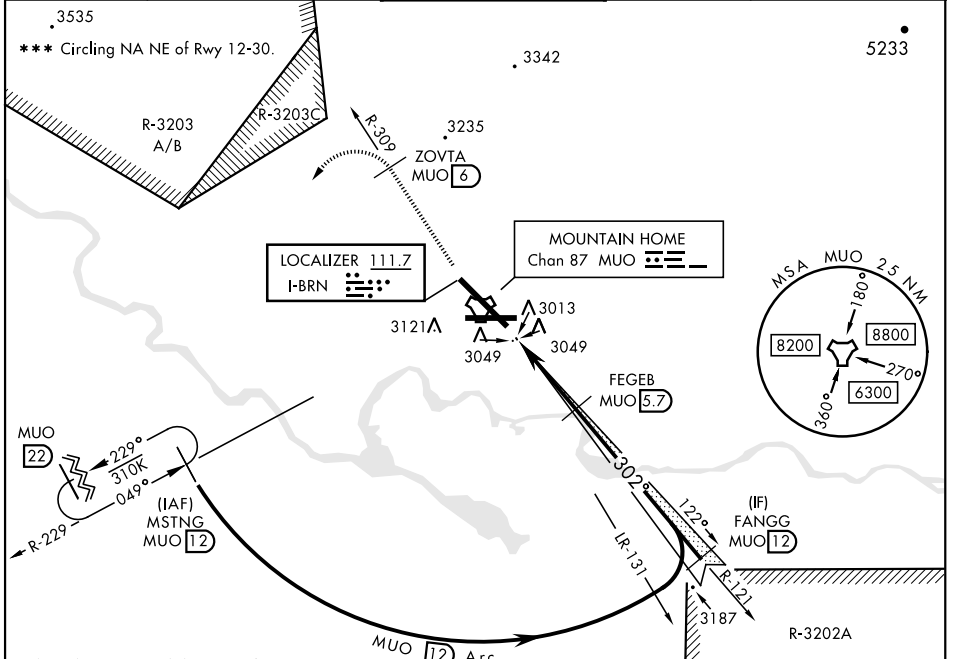
MOUNTAIN HOME AFB (KMUO)

▼ * When ALS inop, increase CAT ABCDE RVR to 47 and vis to 1 mile.
 ** When ALS inop, increase CAT AB RVR to 55 and vis to 1 mile, CAT CDE vis to 1 3/8 miles.

ALSF-1 

MISSED APPROACH: Climb to 10,000 via MUO R-309 to ZOVTA/6 DME, turn left and intcp MUO R-229 to MSTNG/12 DME and hold. Continue climb in hold to 10,000.

ATIS 273.5	MOUNTAIN HOME APP CON 124.8 259.1	MOUNTAIN HOME TOWER 133.85 253.5	GND CON 120.5 275.8	CLNC DEL 127.1 290.425
----------------------	---	--	-------------------------------	----------------------------------

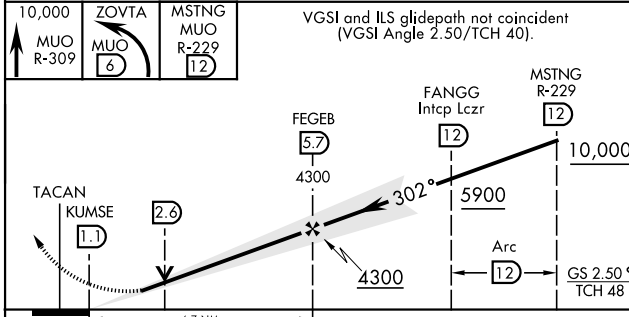


NW-1, 13 JUN 2024 to 11 JUL 2024

NW-1, 13 JUN 2024 to 11 JUL 2024

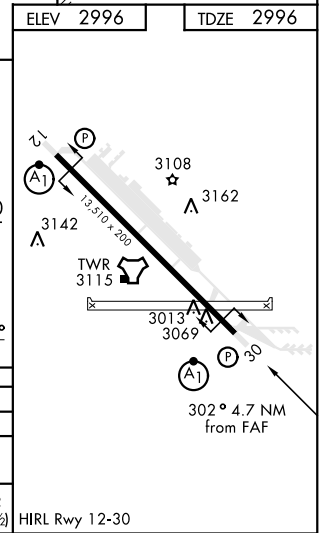
RADAR or DME REQUIRED

EMERG SAFE ALT 100 NM 14,200



VGSI and ILS glidepath not coincident (VGSI Angle 2.50/TCH 40).

CATEGORY	A	B	C	D	E
S-ILS 30 *	3246/40 250 (300-3/4)				
S-LOC 30 **	3460/24	464 (500-1/2)	3460/50 464 (500-1)		
CIRCLING ***	3520-1	3560-1	3560-1 1/2	3560-2	3700-2 1/2
	524 (600-1)	564 (600-1)	564 (600-1 1/2)	564 (600-2)	704 (800-2 1/2)



ILS or LOC Z RWY 30