

MOUNTAIN HOME, IDAHO

TACAN Z RWY 12

MOUNTAIN HOME AFB (KMUO)

TACAN MUO Chan 87	APCH CRS 129°	Rwy ldg 13,510 TDZE 2987 Arprt Elev 2996
--------------------------	----------------------	---

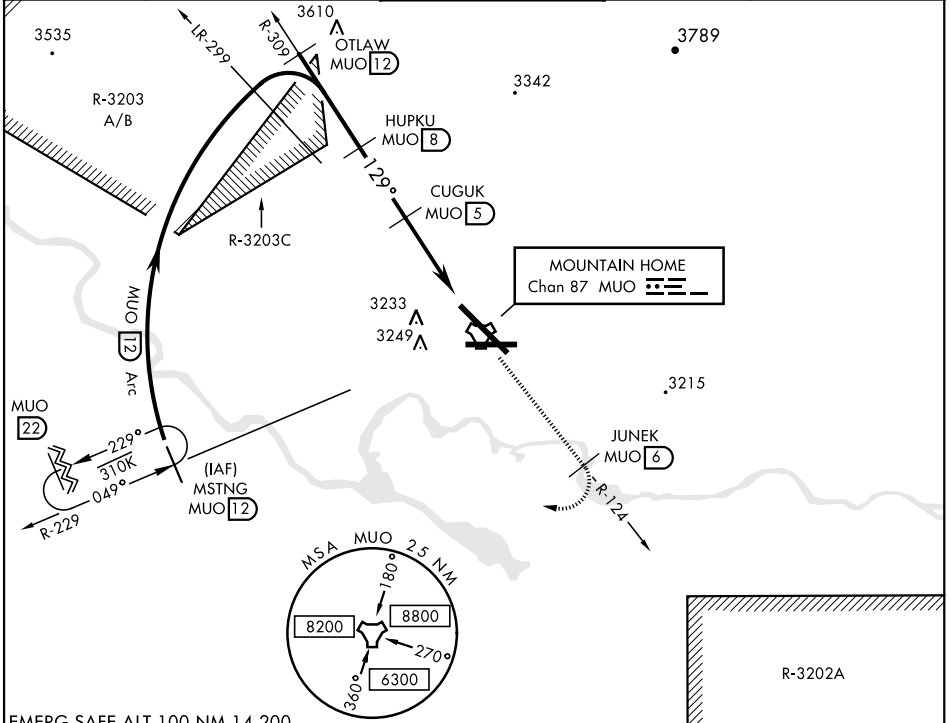
AL-323 [USAF]

▼ * When ALS inop, increase CAT AB RVR to 55 and vis to 1 mile, CAT CDE vis to 1 3/8 miles.
 ** Circling NA NE of Rwy 12-30.



MISSED APPROACH: Climb to 10,000 via MUO R-124 to JUNEK/6 DME, turn right and intercept MUO R-229 to MSTNG/12 DME and hold. Continue climb in hold to 10,000.

ATIS 273.5	MOUNTAIN HOME APP CON 124.8 259.1	MOUNTAIN HOME TOWER 133.85 253.5	GND CON 120.5 275.8	CLNC DEL 127.1 290.425
-------------------	--	---	----------------------------	-------------------------------

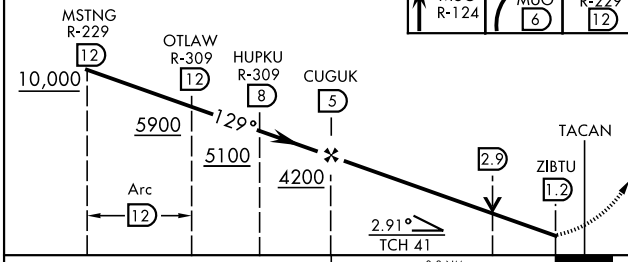


NW-1, 13 JUN 2024 to 11 JUL 2024

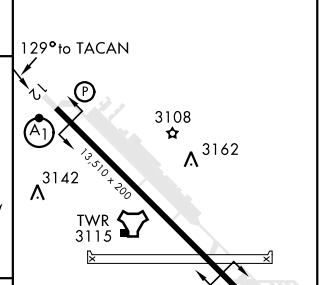
NW-1, 13 JUN 2024 to 11 JUL 2024

EMERG SAFE ALT 100 NM 14,200

VGSI and descent angles not coincident (VGSI Angle 2.50/TCH 41).



ELEV 2996	TDZE 2987
-----------	-----------



CATEGORY	A	B	C	D	E
S-12 *	3480/40	493 (500-3/4)	3480/50	493 (500-1)	
CIRCLING **	3520-1 524 (600-1)	3560-1 564 (600-1)	3560-1 1/2 564 (600-1 1/2)	3560-2 564 (600-2)	3700-2 1/2 704 (800-2 1/2)

HIRL Rwy 12-30

MOUNTAIN HOME, IDAHO

43°03'N-115°52'W

MOUNTAIN HOME AFB (KMUO)

Amdt 3 18JUN20

TACAN Z RWY 12