

# ALLEGHENY NINE DEPARTURE

**TOP ALTITUDE:  
3000**

ATIS  
120.55  
GND CON  
121.7  
ALLEGHENY TOWER  
121.1 239.0  
PITTSBURGH DEP CON  
119.35 285.575 337.4

**BRIGGS**  
114.05 BSV :---  
Chan 87 (Y)

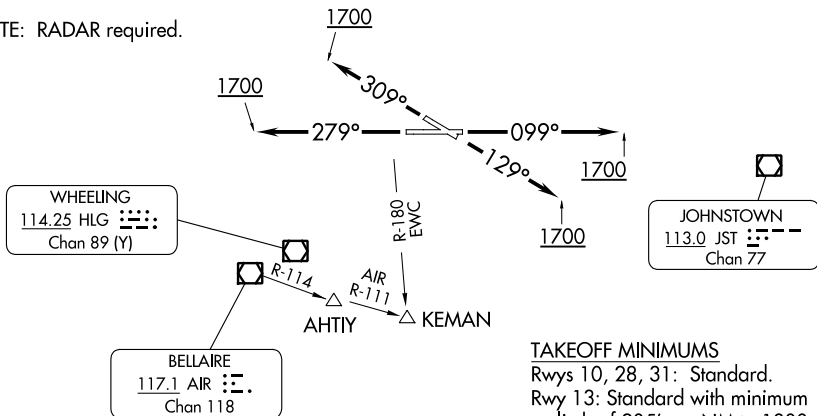
**AKRON**  
114.4 ACO :---  
Chan 91

**FRANKLIN**  
109.6 FKL :---

**ELLWOOD CITY**  
115.8 EWC :---  
Chan 105

TYROO

NOTE: RADAR required.



**WHEELING**  
114.25 HLG :---  
Chan 89 (Y)

**JOHNSTOWN**  
113.0 JST :---  
Chan 77

**BELLAIRE**  
117.1 AIR :---  
Chan 118

**TAKEOFF MINIMUMS**  
Rwys 10, 28, 31: Standard.  
Rwy 13: Standard with minimum  
climb of 205' per NM to 1800.

**PARKERSBURG**  
114.45 JPU :---  
Chan 91(Y)

**MORGANTOWN**  
111.6 MGW :---  
Chan 53

**ELKINS**  
114.2 EKN :---  
Chan 89

**DEPARTURE ROUTE DESCRIPTION**

**TAKEOFF RUNWAY 10:** Climb heading 099° until 1700 thence....  
**TAKEOFF RUNWAY 13:** Climb heading 129° until 1700 thence....  
**TAKEOFF RUNWAY 28:** Climb heading 279° until 1700 thence....  
**TAKEOFF RUNWAY 31:** Climb heading 309° until 1700 thence....

....expect vectors to assigned route/fix. Maintain 3000. Expect further clearance to requested altitude 10 minutes after departure.

NOTE: Chart not to scale.

# ALLEGHENY NINE DEPARTURE

NE-4, 13 JUN 2024 to 11 JUL 2024

NE-4, 13 JUN 2024 to 11 JUL 2024