

LOC/DME I-PWM <b>109.9</b> Chan <b>36</b>	APP CRS <b>110°</b>	Rwy Idg <b>7200</b> TDZE <b>76</b> Apt Elev <b>76</b>
---	------------------------	---

# ILS RWY 11 (CAT II & III)

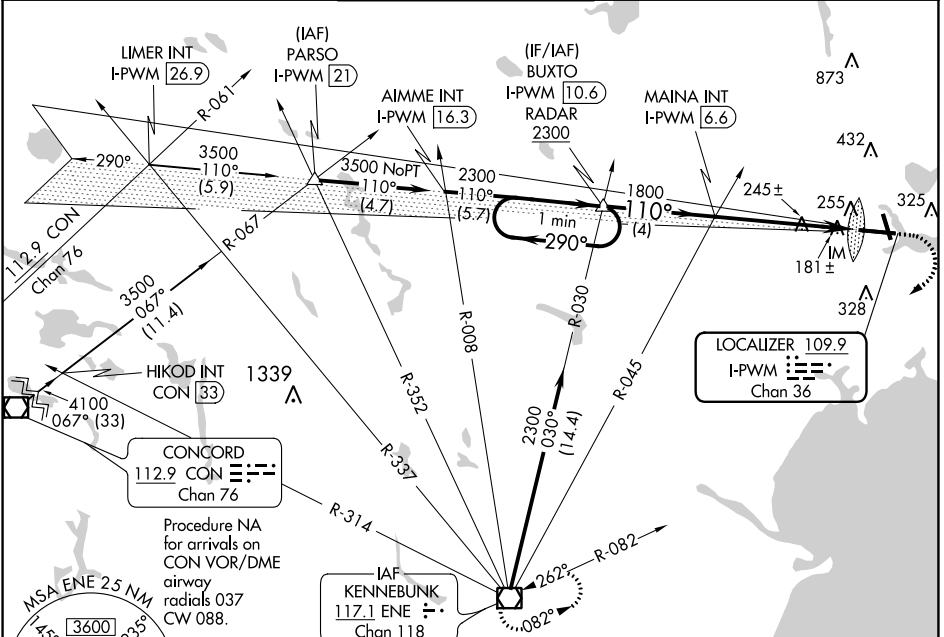
PORTLAND INTL JETPORT (PWM)

**Procedure NA when control tower closed.**

ALS-F-2

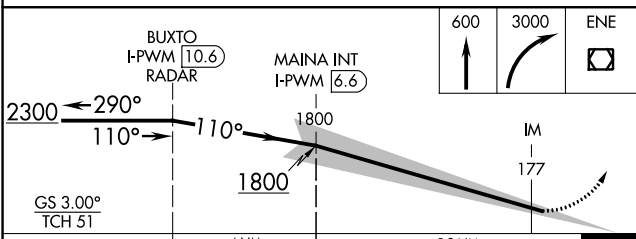
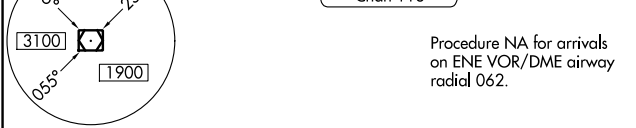
MISSED APPROACH: Climb to 600 then climbing right turn to 3000 direct ENE VOR/DME and hold.

ATIS <b>119.05</b>	PORTLAND APP CON * <b>119.75 269.35</b>	PORTLAND TOWER * <b>120.9 (CTAF) 257.8</b>	GND CON <b>121.9</b>	CLNC DEL <b>121.9</b>	UNICOM <b>122.95</b>
-----------------------	--	---	-------------------------	--------------------------	-------------------------

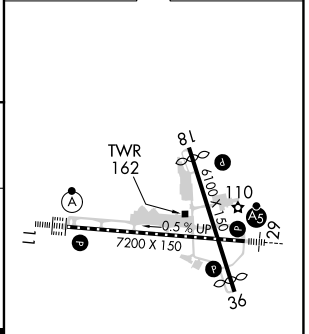


NE-1, 13 JUN 2024 to 11 JUL 2024

NE-1, 13 JUN 2024 to 11 JUL 2024



ELEV 76	TDZE 76
---------	---------



CATEGORY	A	B	C	D
S-ILS 11	CAT II RA 108/12		100 DA 176	
S-ILS 11	CAT III RVR 06			

**CATEGORY II & III ILS-SPECIAL AIRCREW & AIRCRAFT CERTIFICATION REQUIRED**

- TDZ/CL Rwy 11
- MIRL Rwy 18-36
- HIRL Rwy 11-29
- REIL Rwy 18 and 36