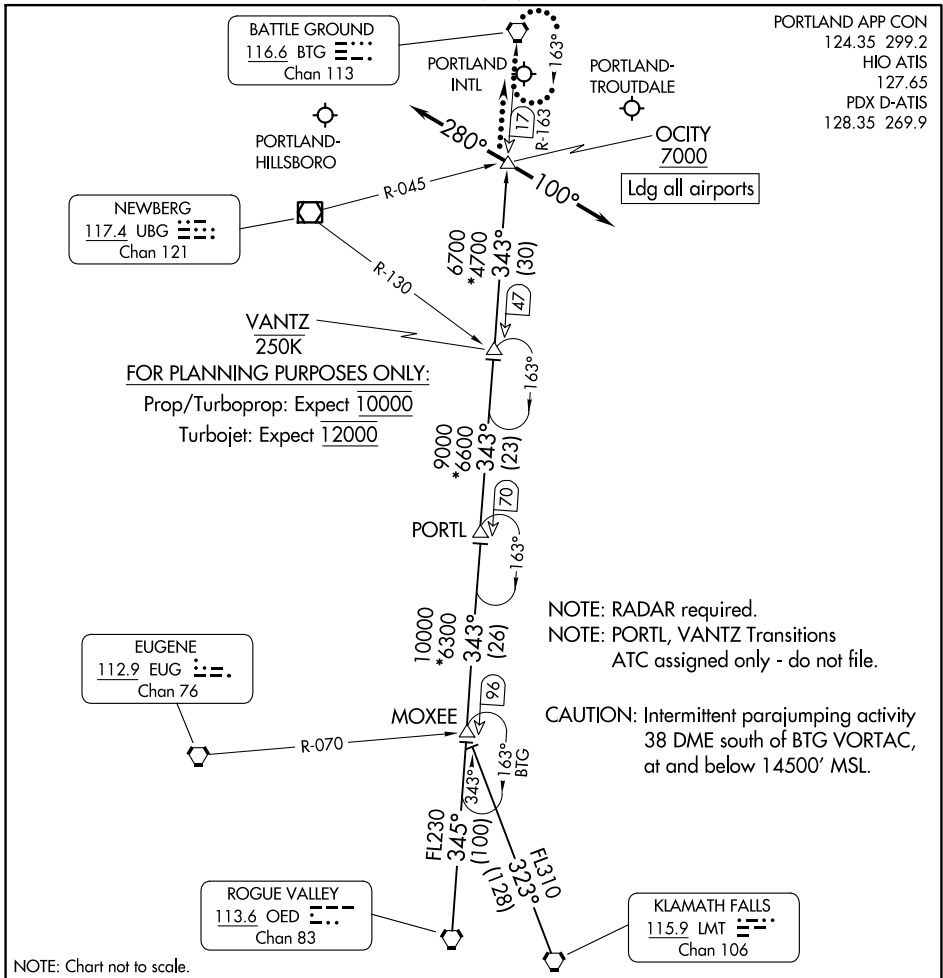


# OCITY THREE ARRIVAL



NOTE: RADAR required.  
NOTE: PORTL, VANTZ Transitions  
ATC assigned only - do not file.

CAUTION: Intermittent parajumping activity  
38 DME south of BTG VORTAC,  
at and below 14500' MSL.

## ARRIVAL ROUTE DESCRIPTION

**KLAMATH FALLS TRANSITION (LMT.OCITY3):** From over LMT VORTAC on LMT R-323 to MOXEE, then on BTG R-163 to OCITY. Thence. . .

**MOXEE TRANSITION (MOXEE.OCITY3):** From over MOXEE on BTG R-163 to OCITY. Thence. . .

**ROGUE VALLEY TRANSITION (OED.OCITY3):** From over OED VORTAC on OED R-345 to MOXEE, then on BTG R-163 to OCITY. Thence. . .

**PORTL TRANSITION (PORTL.OCITY3):** From over PORTL on BTG R -163 to OCITY. Thence. . .

**VANTZ TRANSITION (VANTZ.OCITY3):** From over VANTZ on BTG R-163 to OCITY. Thence. . .

**LANDING EAST:** From OCITY heading 280°, expect RADAR vectors to final approach course.

**LANDING WEST:** From OCITY heading 100°, expect RADAR vectors to final approach course.

**LOST COMMUNICATIONS:** After OCITY, proceed direct BTG VORTAC and hold.

# OCITY THREE ARRIVAL