

WAAS CH 40004 W10A	APP CRS 103°	Rwy Idg TDZE Apt Elev	11000 31 31
---------------------------------	------------------------	-----------------------------	--

RNAV (GPS) Y RWY 10R

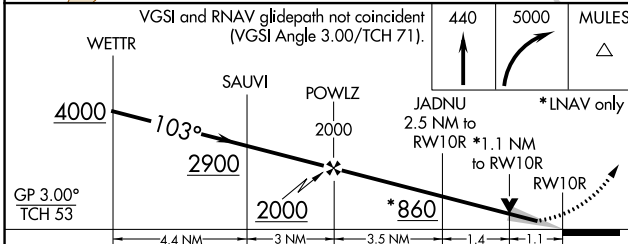
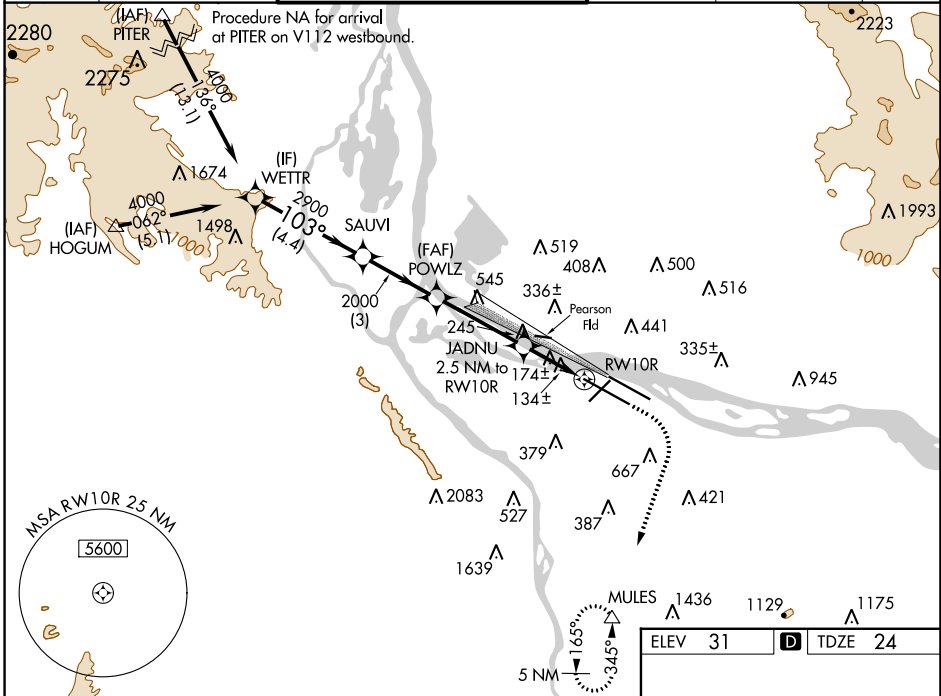
PORTLAND INTL (PDX)

⚠ For uncompensated Baro-VNAV systems, LNAV/VNAV NA below -1.5°C (5°F) or above 54°C (130°F). DME/DME RNP-0.3 NA. Simultaneous approach authorized with Rwy 10L. Use of FD or AP providing RNAV track guidance required during simultaneous operations. LNAV procedure NA during simultaneous operations.

ALSF-2
(A)

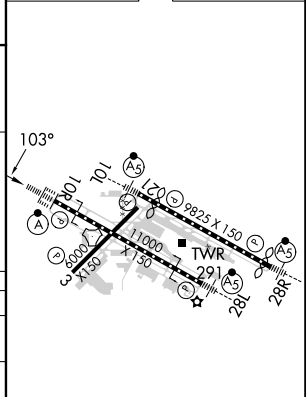
MISSED APPROACH: Climb to 440 then climbing right turn to 5000 direct MULES and hold.

D-ATIS 128.35 269.9	PORTLAND APP CON 124.35 299.2	PORTLAND TOWER Rwy 10L-28R 118.7 257.8	Rwys 3-21, 10R-28L 123.775 251.125	GND CON 121.9 348.6	CLNC DEL 120.125 318.1	CPDLC
---	---	---	--	-------------------------------	----------------------------------	-------



CATEGORY	A	B	C	D
LPV DA		224/18	200 (200-½)	
LNAV/VNAV DA		329/24	305 (300-½)	
LNAV MDA	440/24	416 (500-½)	440/40	416 (500-¾)
(C) CIRCLING	720-1 689 (700-1)	760-1 729 (800-1)	1060-3	1029 (1100-3)

ELEV 31	(D) TDZE 24
---------	--------------------



REIL Rwys 3 and 21
TDZ/CL Rwy 10R
MIRL Rwy 3-21
HIRL Rwys 10L-28R and 10R-28L

NW-1, 13 JUN 2024 to 11 JUL 2024

NW-1, 13 JUN 2024 to 11 JUL 2024