

WHAMY FOUR DEPARTURE (RNAV)

PORTLAND INTL (PDX)
PORTLAND, OREGON

AL-330 (FAA)

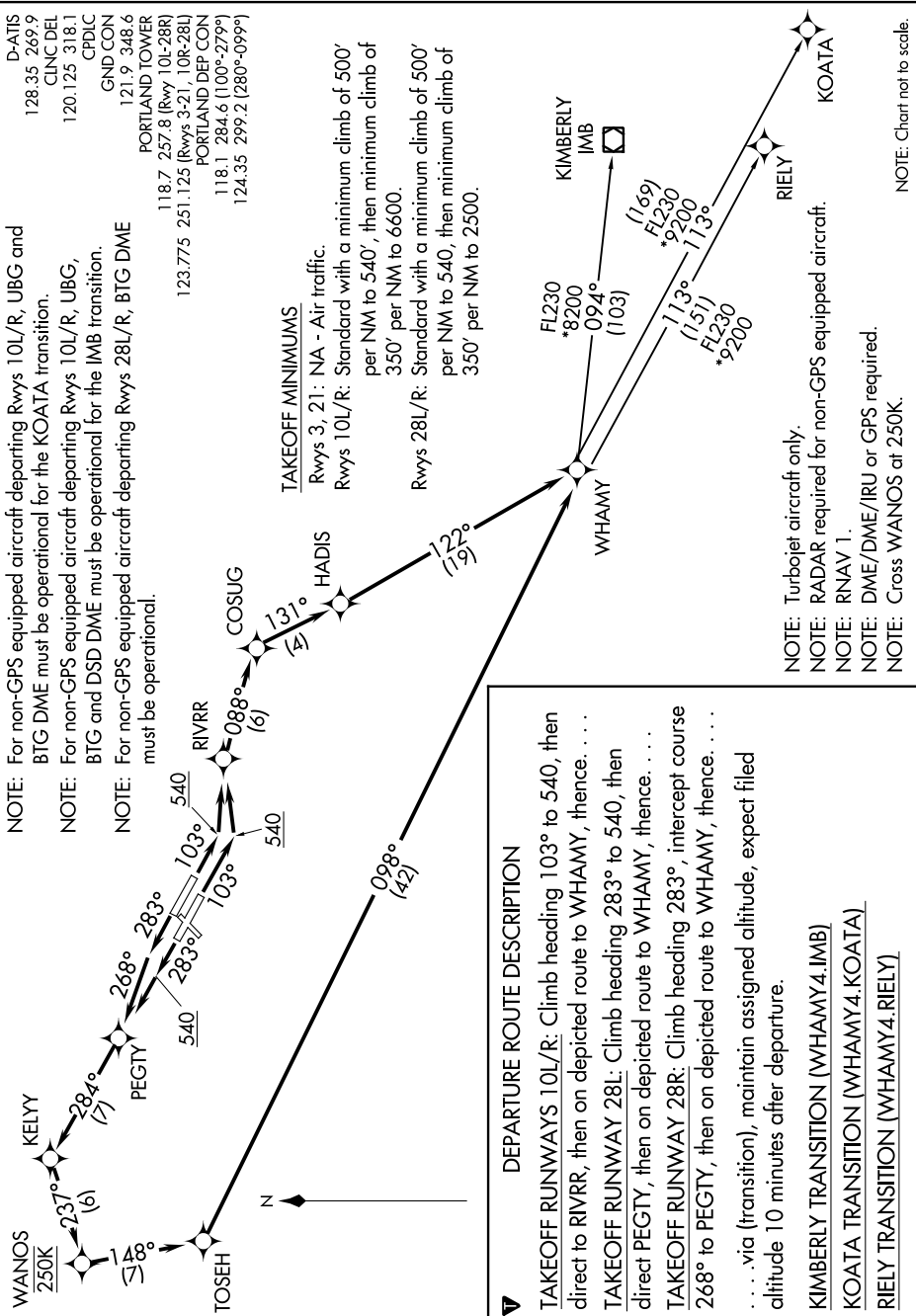
NW-1, 13 JUN 2024 to 11 JUL 2024

D-AITS
128.35 269.9
CINC DEL
120.125 318.1
CPDIC
GND CON
121.9 348.6
PORTLAND TOWER
118.7 257.8 (Rwy 10L-28R)
123.775 251.125 (Rwys 3-21, 10R-28L)
PORTLAND/DEP CON
118.1 284.6 (100°-279°)
124.35 299.2 (280°-099°)

NOTE: For non-GPS equipped aircraft departing Rwys 10L/R, UBG and BTG DME must be operational for the KOATA transition.
NOTE: For non-GPS equipped aircraft departing Rwys 10L/R, UBG, BTG and DSD DME must be operational for the IMB transition.
NOTE: For non-GPS equipped aircraft departing Rwys 28L/R, BTG DME must be operational.

TAKEOFF MINIMUMS

Rwys 3, 21: NA - Air traffic.
Rwys 10L/R: Standard with a minimum climb of 500' per NM to 540', then minimum climb of 350' per NM to 6600.
Rwys 28L/R: Standard with a minimum climb of 500' per NM to 540', then minimum climb of 350' per NM to 2500.



DEPARTURE ROUTE DESCRIPTION

TAKEOFF RUNWAYS 10L/R: Climb heading 103° to 540, then direct to RIVRR, then on depicted route to WHAMY, thence. . . .
TAKEOFF RUNWAY 28L: Climb heading 283° to 540, then direct PEGTY, then on depicted route to WHAMY, thence. . . .
TAKEOFF RUNWAY 28R: Climb heading 283°, intercept course 268° to PEGTY, then on depicted route to WHAMY, thence. . . .
. . . via (transition), maintain assigned altitude, expect filed altitude 10 minutes after departure.
KIMBERLY TRANSITION (WHAMY4.IMB)
KOATA TRANSITION (WHAMY4.KOATA)
RIELY TRANSITION (WHAMY4.RIELY)

NOTE: Turbojet aircraft only.
NOTE: RADAR required for non-GPS equipped aircraft.
NOTE: RNAV 1.
NOTE: DME/DME/IRU or GPS required.
NOTE: Cross WANOS at 250K.

NOTE: Chart not to scale.

NW-1, 13 JUN 2024 to 11 JUL 2024