

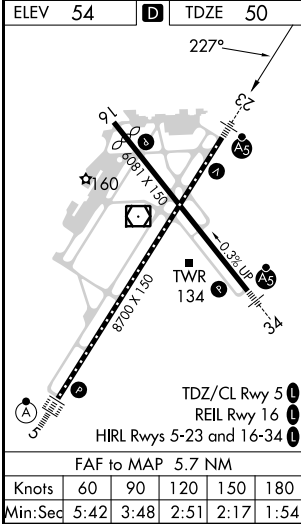
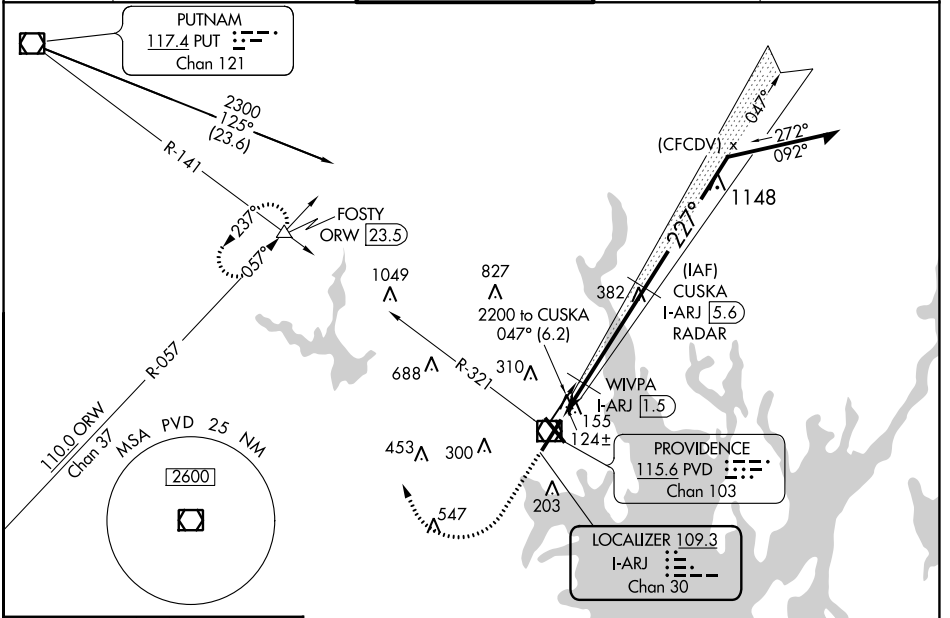
LOC/DME I-ARJ 109.3 Chan 30	APP CRS 227°	Rwy Idg 8700 TDZE 50 Apt Elev 54
--	------------------------	---

ILS or LOC RWY 23

RHODE ISLAND TF GREEN INTL (PVD)

DME or RADAR required for procedure entry.		MALSR	MISSED APPROACH: Climb to 700 then climbing right turn to 2500 on heading 350° and PVD VOR/DME R-321 to FOSTY INT/ORW 23.5 DME and hold.	
**RVR 1800 authorized with use of FD or AP or HUD to DA. 				

D-ATIS 124.2	PROVIDENCE APP CON * 123.675 244.875	PROVIDENCE TOWER * 120.7 (CTAF) 257.8	GND CON 121.9 348.6	CLNC DEL 126.65 348.6
------------------------	--	---	-------------------------------	---------------------------------



700 2500 PVD R-321 FOSTY

VGSI and ILS glidepath not coincident (VGSI Angle 3.00/TCH 41).

CUSKA I-ARJ 5.6 RADAR

* LOC only. Remain within 10 NM

I-ARJ DME ANTENNA WIVPA I-ARJ 1.5

I-ARJ 0.1 * I-ARJ 0.8

1900 047° 2200

GS 3.00° TCH 51

0.9 NM 0.7 4.1 NM

CATEGORY	A	B	C	D
S-ILS 23**	250/24 200 (200-½)			
S-LOC 23	600/24	550 (600-½)	600/60	550 (600-1¼)
CIRCLING	600-1 546 (600-1)	640-1 586 (600-1)	640-1½ 586 (600-1½)	860-2½ 806 (900-2½)
WIVPA FIX MINIMUMS				
S-LOC 23	380/24	330 (400-½)	380/26	330 (400-½)
CIRCLING	560-1 506 (600-1)	640-1 586 (600-1)	640-1½ 586 (600-½)	860-2½ 806 (900-2½)

NE-1, 13 JUN 2024 to 11 JUL 2024

NE-1, 13 JUN 2024 to 11 JUL 2024