

LOC/DME I-FUNQ 111.5 Chan 52	APP CRS 337°	Rwy Idg 6081 TDZE 50 Apt Elev 54
--------------------------------------------------	------------------------	-------------------------------------------------------------

ILS or LOC RWY 34

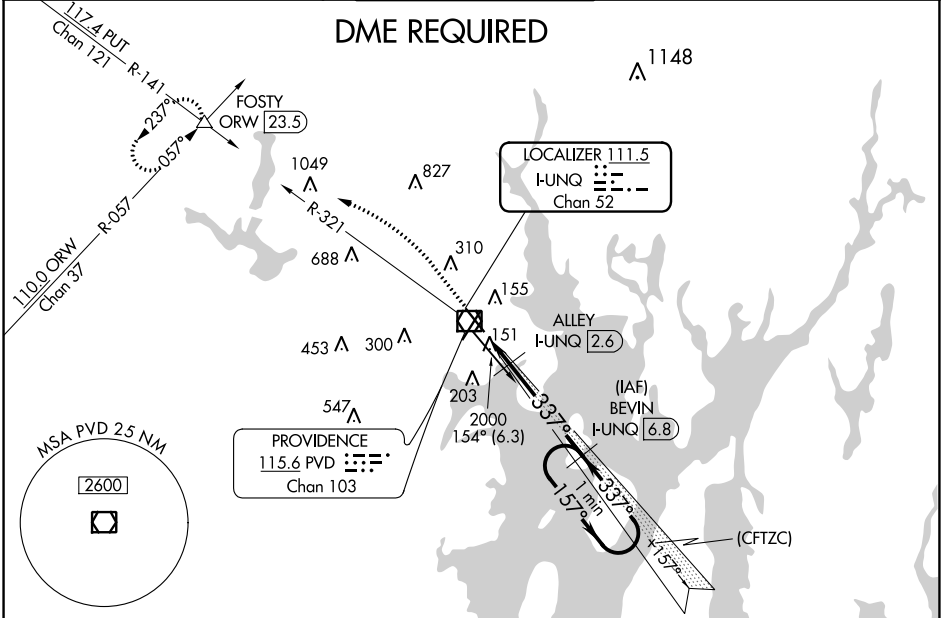
RHODE ISLAND TF GREEN INTL (PVD)

⚠ DME required. Rwy 34 helicopter visibility reduction below RVR 4000 NA. For inop MALSR, increase S-LOC Cat A/B visibility to RVR 5500, and Cat C/D visibility to RVR 5000. Autopilot coupled approach NA below 300.

MALSR

MISSED APPROACH: Climb to 700 then climbing left turn to 2500 on heading 300° and on PVD VOR/DME R-321 to FOSTY INT/ORW 23.5 DME and hold.

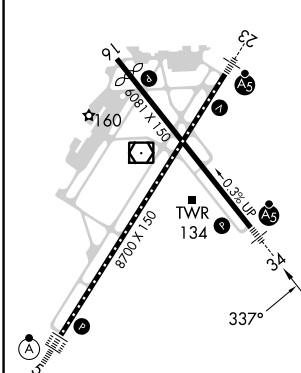
D-ATIS 124.2	PROVIDENCE APP CON * 123.675 244.875	PROVIDENCE TOWER * 120.7 (CTAF) 0 257.8	GND CON 121.9 348.6	CLNC DEL 126.65 348.6
------------------------	------------------------------------------------	---------------------------------------------------	-------------------------------	---------------------------------



NE-1, 13 JUN 2024 to 11 JUL 2024

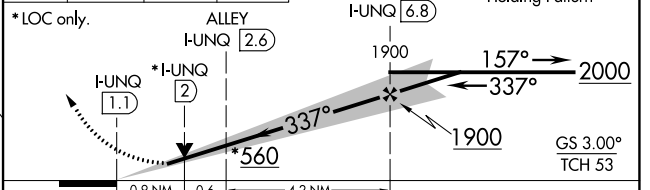
NE-1, 13 JUN 2024 to 11 JUL 2024

ELEV 54	D	TDZE 50
---------	----------	---------



TDZ/CL Rwy 5 **Ⓛ**
 REIL Rwy 16 **Ⓛ**
 HIRL Rwy 5-23 and 16-34 **Ⓛ**

700 ↑	2500 hdg 300°	PVD R-321	FOSTY	VGSI and ILS glidepath not coincident (VGSI Angle 3.00/TCH 60).
----------	------------------	-----------	-------	-----------------------------------------------------------------



CATEGORY	A	B	C	D
S-ILS 34		331/40	281 (300-3/4)	
S-LOC 34		380/40	330 (400-3/4)	
C CIRCLING	560-1 506 (600-1)	640-1 586 (600-1)	640-1½ 586 (600-1½)	860-2½ 806 (900-2½)