

LOC/DME I-PVD 109.3 Chan 30	APP CRS 047°	Rwy Idg 8700 TDZE 53 Apt Elev 54
--	------------------------	---

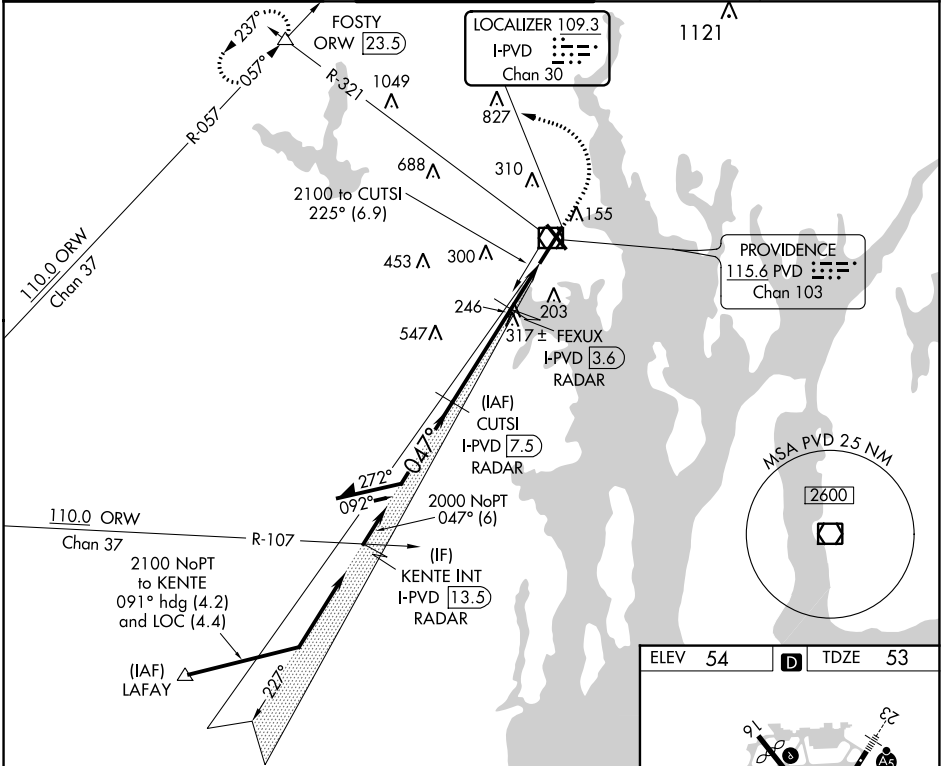
ILS or LOC RWY 5

RHODE ISLAND TF GREEN INTL (PVD)

▼ When tower closed: increase S-ILS 5 all Cats and S-LOC 5 Cats A and B visibilities to 3/4 SM, and S-LOC 5 Cats C and D visibility to 1 SM.
▲ When control tower closed, for inop ALS, increase S-LOC 5 Cats C and D visibility to 1 1/2 SM. RADAR or DME required for localizer minimums.

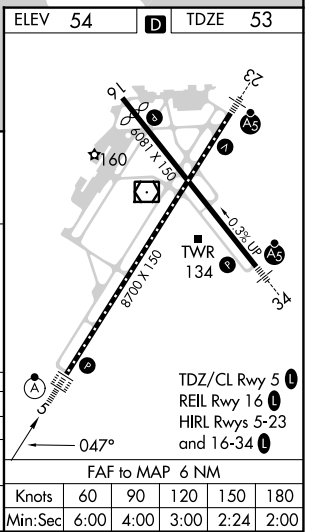
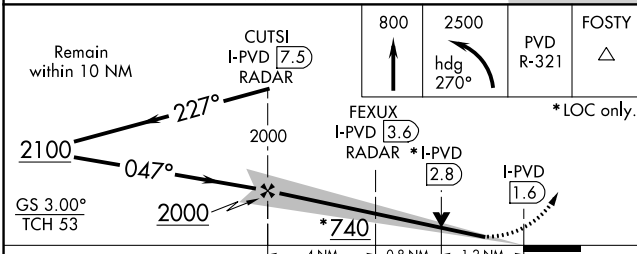
ALS-2 MISSED APPROACH: Climb to 800 then climbing left turn to 2500 on heading 270° and PVD VOR/DME R-321 to FOSTY INT/ORW 23.5 DME and hold.

D-ATIS 124.2	PROVIDENCE APP CON * 123.675 244.875	PROVIDENCE TOWER * 120.7 (CTAF) 257.8	GND CON 121.9 348.6	CLNC DEL 126.65 348.6
------------------------	--	---	-------------------------------	---------------------------------



NE-1, 13 JUN 2024 to 11 JUL 2024

NE-1, 13 JUN 2024 to 11 JUL 2024



CATEGORY	A	B	C	D
S-ILS 5	253/18		200 (200-1/2)	
S-LOC 5	500/24	447 (500-1/2)	500/45	447 (500-3/8)
C CIRCLING	560-1 506 (600-1)	640-1 586 (600-1)	640-1 1/2 586 (600-1 1/2)	860-2 1/2 806 (900-2 1/2)

Knots	60	90	120	150	180
Min:Sec	6:00	4:00	3:00	2:24	2:00