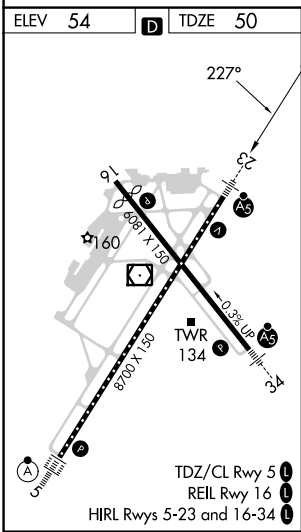
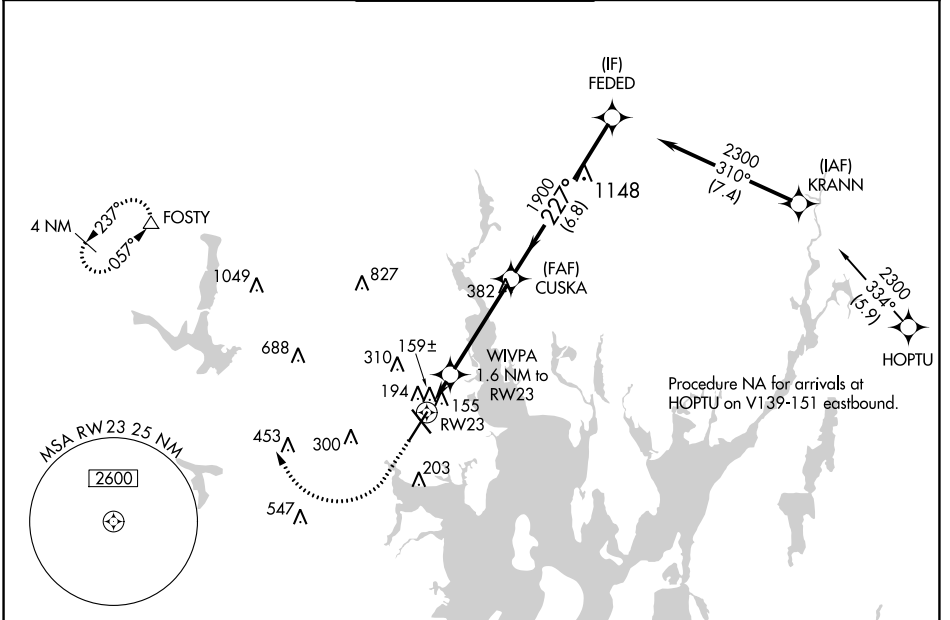


WAAS CH 93823 W23A	APP CRS 227°	Rwy Idg TDZE Apt Elev	8700 50 54
--	------------------------	-----------------------------	---------------------------------------

RNAV (GPS) Y RWY 23

RHODE ISLAND TF GREEN INTL (PVD)

RNP APCH. ▼ For uncompensated Baro-VNAV systems, procedure NA below -17°C or above 54°C. For inop ALS, increase LNAV Cats C/D visibility to RVR 6000. ** RVR 1800 authorized with use of FD or AP or HUD to DA.		MALSR AS	MISSED APPROACH: Climb to 1700 then climbing right turn to 2500 direct FOSTY and hold.	
D-ATIS 124.2	PROVIDENCE APP CON * 123.675 244.875	PROVIDENCE TOWER * 120.7 (CTAF) 0 257.8	GND CON 121.9 348.6	CLNC DEL 126.65 348.6



ELEV 54	D	TDZE 50	1700 2500 FOSTY ↑ ↷ △ VGSi and RNAV glidepath not coincident (VGSi Angle 3.00/TCH 41).				
*LNAV only		WIVPA 1.6 NM to RW23		CUSKA 1900		FEDED 2300	
RW23		*1 NM to RW23		*600		GP 3.00° TCH 51	
-1 NM		0.6 NM		4.1 NM		6.8 NM	
CATEGORY	A		B		C		D
LPV DA **			250/24		200 (200-½)		
LNAV/VNAV DA			346/24		296 (300-½)		
LNAV MDA	460/24		410 (500-½)		460/40		410 (500-¾)
CIRCLING	560-1 506 (600-1)		640-1 586 (600-1)		640-1½ 586 (600-1½)		860-2½ 806 (900-2½)

NE-1, 13 JUN 2024 to 11 JUL 2024

NE-1, 13 JUN 2024 to 11 JUL 2024