

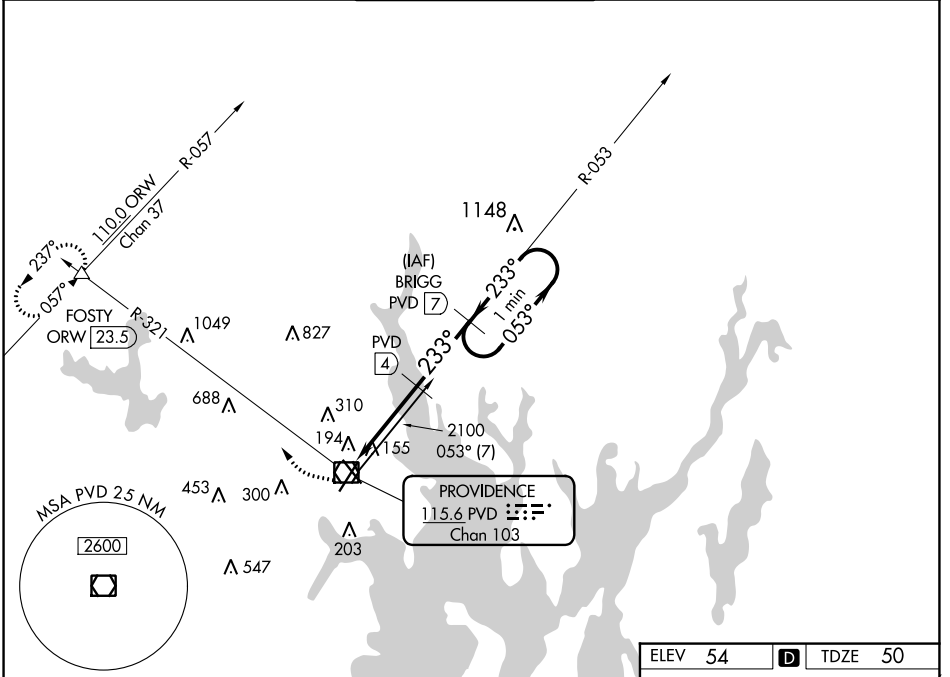
VOR/DME PVD <b>115.6</b> Chan <b>103</b>	APP CRS <b>233°</b>	Rwy Idg TDZE Apt Elev	<b>8700</b> <b>50</b> <b>54</b>
--	------------------------	-----------------------------	---------------------------------------

# VOR/DME RWY 23

RHODE ISLAND TF GREEN INTL (PVD)

For inoperative MALS R increase S-23 Cats A, B, and C visibility to RVR 5000, Cat D visibility to RVR 6000.	MALS R	MISSED APPROACH: Climbing right turn to 2500 via PVD R-321 to FOSTY INT and hold.

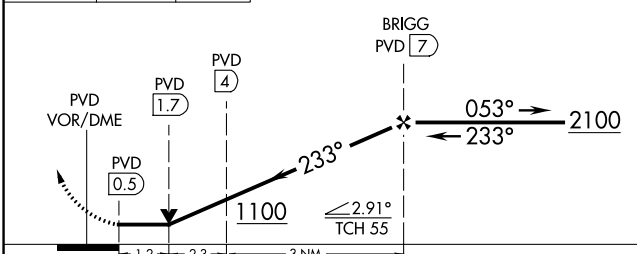
D-ATIS <b>124.2</b>	PROVIDENCE APP CON * <b>123.675 244.875</b>	PROVIDENCE TOWER * <b>120.7 (CTAF) 257.8</b>	GND CON <b>121.9 348.6</b>	CLNC DEL <b>126.65 348.6</b>
------------------------	--	---	-------------------------------	---------------------------------



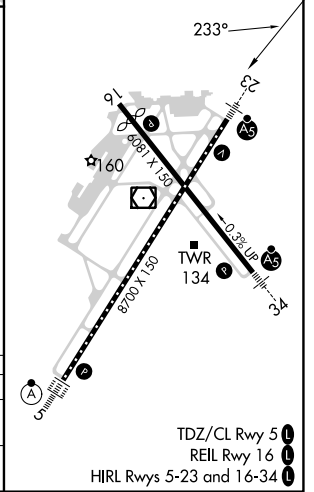
NE-1, 13 JUN 2024 to 11 JUL 2024

NE-1, 13 JUN 2024 to 11 JUL 2024

2500	PVD R-321	FOSTY	VGSI and descent angle not coincident (VGSI Angle 3.00/TCH 41).	One Minute Holding Pattern
------	-----------	-------	---	----------------------------



ELEV 54	D	TDZE 50
---------	---	---------



CATEGORY	A	B	C	D
S-23	500/40	450 (500-3/4)	500/45	500/50
			450 (500-2/3)	450 (500-1)
CIRCLING	560-1	640-1	640-1 1/2	860-2 1/2
	506 (600-1)	586 (600-1)	586 (600-1 1/2)	806 (900-2 1/2)

TDZ/CL Rwy 5  
REIL Rwy 16  
HIRL Rws 5-23 and 16-34