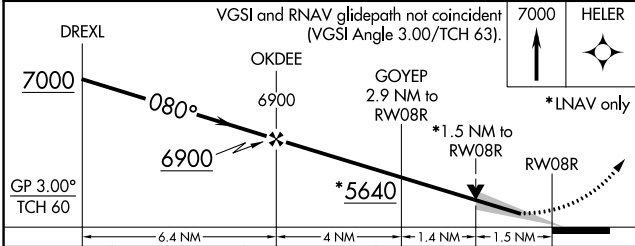
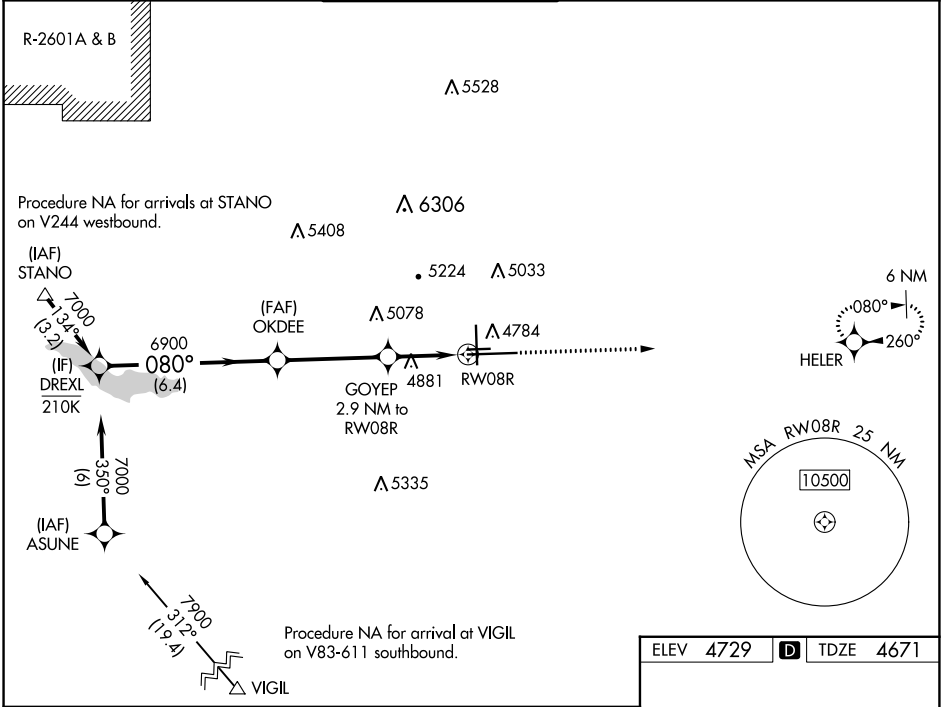


WAAS CH <b>70531</b> <b>W08A</b>	APP CRS <b>080°</b>	Rwy Idg TDZE Apt Elev	<b>10496</b> <b>4671</b> <b>4729</b>
--	------------------------	-----------------------------	--

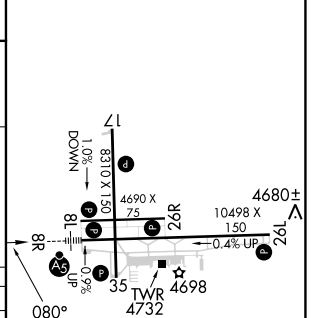
# RNAV (GPS) RWY 8R

PUEBLO MEML (PUB)

RNP APCH-GPS.				MALSR	MISSED APPROACH: Climb to 7000 direct HELER and hold.	
<p>▼ For uncompensated Baro-VNAV systems, LNAV/VNAV NA below -22°C or above 54°C. For inop ALS, increase LNAV/VNAV visibility to 7/8 SM.</p>						
ATIS <b>125.25</b>	DENVER APP CON ★ <b>120.1 290.5</b>	PUEBLO TOWER ★ <b>119.1 (CTAF) 0 257.8</b>	GND CON <b>121.9</b>	CLNC DEL <b>120.9</b>	UNICOM <b>122.95</b>	



ELEV 4729	D	TDZE 4671
-----------	---	-----------



CATEGORY	A	B	C	D
LPV DA	4871-1/2		200 (200-1/2)	
LNAV/VNAV DA	4982-1/2		311 (300-1/2)	
LNAV MDA	5200-1/2	529 (500-1/2)	5200-1	529 (500-1)
CIRCLING	5340-1	611 (700-1)	5580-2 1/2 851 (900-2 1/2)	5800-3 1071 (1100-3)

HIRL Rwy 8R-26L

MIRL Rwy 17-35 and 8L-26R

REIL Rwy 8L, 17, 26L, 26R and 35

SW-1, 13 JUN 2024 to 11 JUL 2024